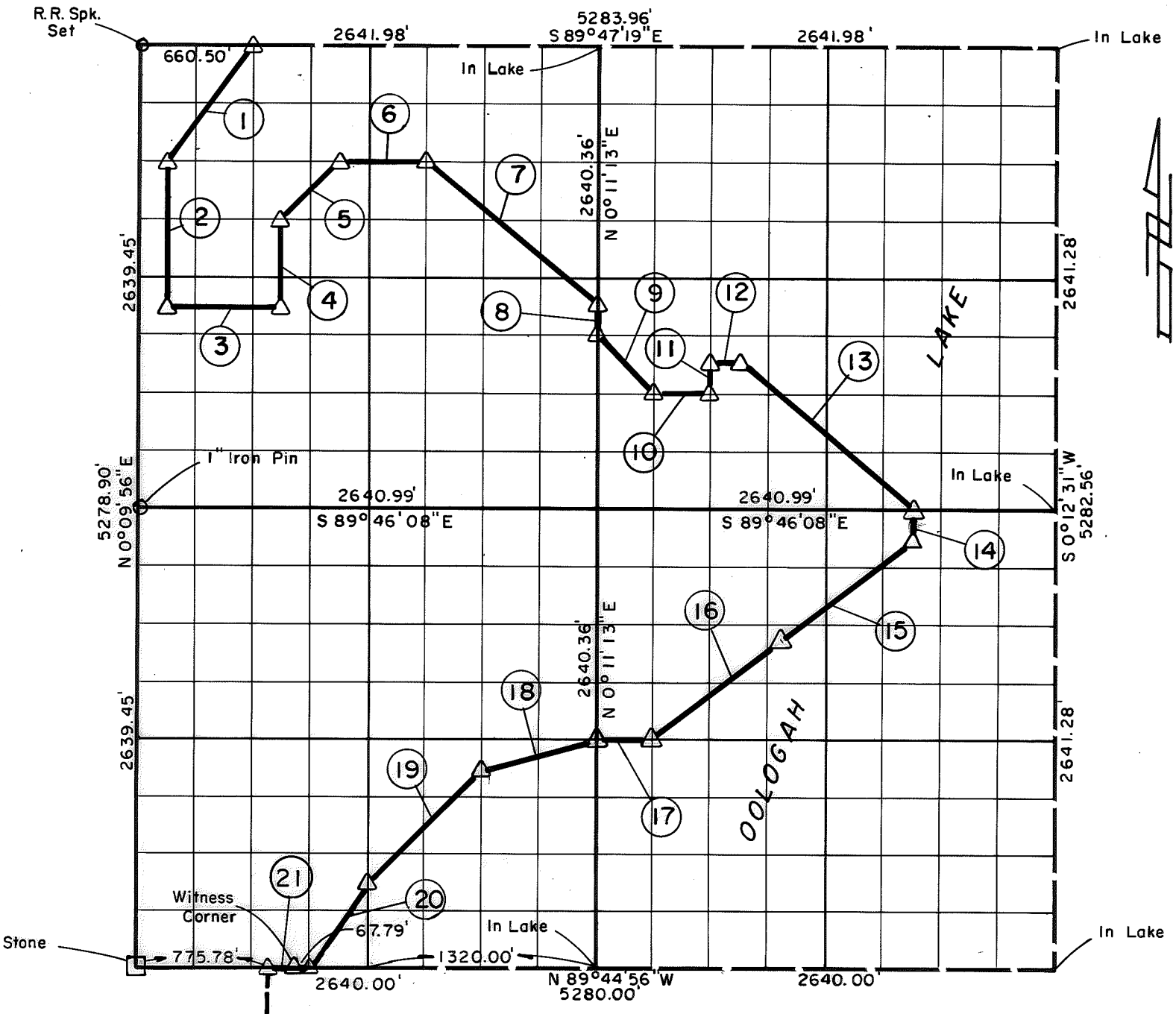


PARTIAL BOUNDARY SURVEYS
OOLOGAH LAKE, AREA "A"
VERDIGRIS RIVER, OKLAHOMA

Performed Under Contract Number DACW 56-77-C-0052

SEC. 34 , T. 25 N. , R. 16 E. , COUNTY NOWATA



Course No.	Distance	Bearing	Course No.	Distance	Bearing
1	824.82'	S 37° 04' 43" W	14	165.06'	S 0° 12' 07" W
2	824.85'	S 0° 10' 01" W	15	940.57'	S 52° 20' 46" W
3	660.36'	S 89° 46' 39" E	16	940.57'	S 52° 20' 46" W
4	494.95'	N 0° 10' 20" E	17	330.06'	N 89° 45' 33" W
5	466.64'	N 45° 12' 58" E	18	680.27'	S 76° 12' 12" W
6	495.32'	S 89° 47' 01" E	19	932.90'	S 45° 12' 54" W
7	1289.59'	S 50° 00' 17" E	* 20	594.54'	S 33° 53' 26" W
8	165.02'	S 0° 11' 13" W	* 21	214.22'	N 89° 44' 56" W
9	466.99'	S 44° 48' 10" E			
10	330.15'	S 89° 46' 25" E			
11	165.04'	N 0° 11' 33" E			
12	165.08'	S 89° 46' 30" E			
13	1289.52'	S 49° 58' 56" E			

CERTIFICATE OF SURVEY
 I hereby certify that the
 Above Plat is a true and
 Correct Representation of
 The Survey Made in Sec. 34
 T25 N. R 16 E
 Oklahoma
Jimmie Dale Nickle
 Jimmie Dale Nickle
 Registered Land Surveyor No. 78

Field Book No. 0-289 Date 77
CRAIG & KEITHLINE
 Consulting Engineers
 For
U.S. ARMY ENGINEER DISTRICT, TULSA
CORPS OF ENGINEERS

Δ MONUMENT
 □ ORIGINAL CORNER
 ○ IRON PIN
 * REVISED: 12-19-77