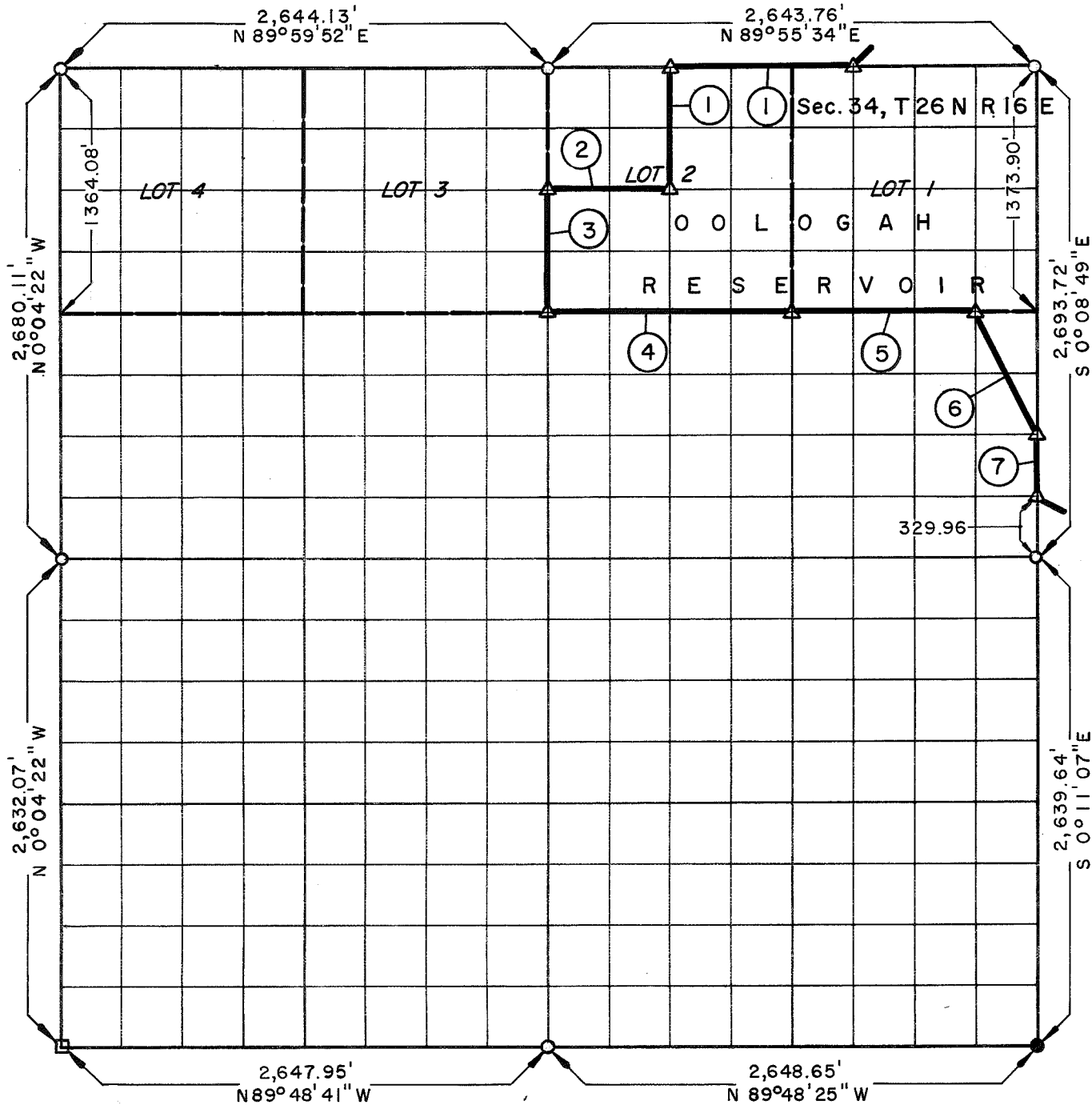


# PARTIAL BOUNDARY SURVEYS

## VERDIGRIS RIVER, OKLAHOMA

SEC. 3 T 25 N R 16 E COUNTY NOWATA



Course No.	Distance	Bearing	Course No.	Distance	Bearing
1	711.68	S 0° 07' 18" E			
2	661.05	N 89° 54' 44" W			
3	657.51	S 0° 06' 49" E			
4	1,322.28	S 89° 55' 55" E			
5	991.72	S 89° 55' 55" E			
6	739.21	S 26° 42' 40" E			
7	329.96	S 0° 08' 49" E			

Field Book No. 0-248, Date 7-19-71

**CERTIFICATE OF SURVEY**

I HEREBY CERTIFY THAT THE ABOVE PLAT IS A TRUE AND CORRECT REPRESENTATION OF THE SURVEY MADE IN SECTION 3, T 25 N, R 16 E, NOWATA COUNTY, OKLAHOMA

*Jack C. Cox*  
REGISTERED LAND SURVEYOR

**K.N. COX & ASSOCIATES - ENGINEERS**

Under the Supervision of

**U.S. ARMY ENGINEER DISTRICT, TULSA  
CORPS OF ENGINEERS**

SHEET 1 of 1

**LEGEND**

- ▲ MONUMENT
- ORIGINAL CORNER
- IRON PIN
- 2" IRON PIPE