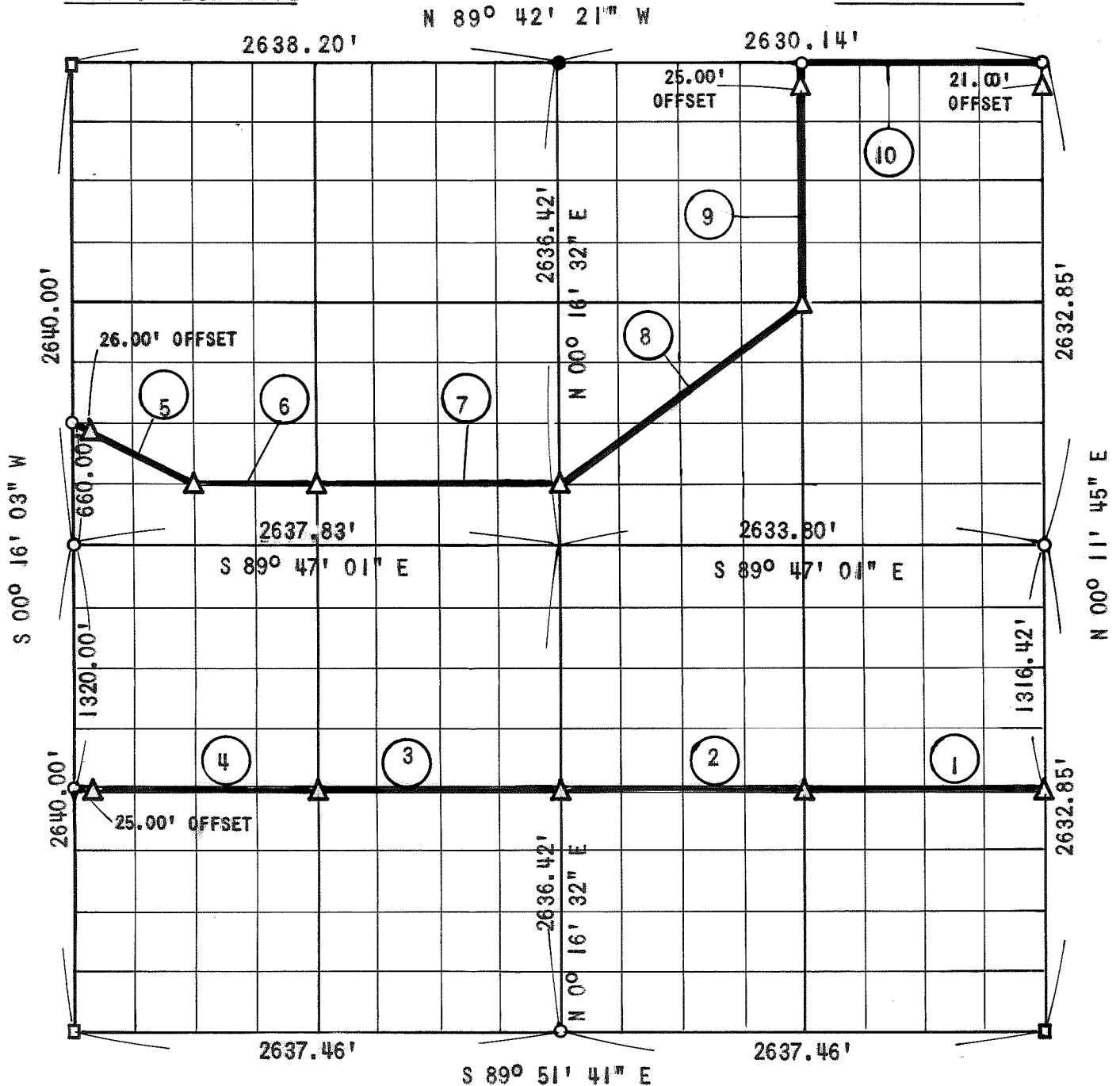


PARTIAL BOUNDARY SURVEY
 OOLOGAH RESERVOIR
 VERDIGRAS RIVER, OKLAHOMA

Performed Under Contract Number DACW 56-70-C-0149

SEC. 8 T25N R16E

NOWATA COUNTY



Course No.	Distance	Bearing	Course No.	Distance	Bearing
1	1317.82'	N 89° 49' 21" W			
2	1318.36'	N 89° 49' 21" W			
3	1318.82'	N 89° 49' 21" W			
4	1318.82'	N 89° 49' 21" W			
5	737.21'	S 63° 10' 56" E			
6	659.47'	S 89° 46' 26" E			
7	1318.94'	S 89° 46' 26" E			
8	1645.93'	N 53° 20' 46" E			
9	1317.32'	N 00° 14' 09" E			
10	1315.07'	S 89° 42' 21" E			

Field Book No. 0-226

Date: August 7, 1970

CERTIFICATE OF SURVEY

I HEREBY CERTIFY THAT THE ABOVE PLAT IS A TRUE AND CORRECT REPRESENTATION OF THE SURVEY MADE IN SEC. 8 T25N R16E NOWATA COUNTY

SULLIVAN AND GILBERT, INC.

Under the Supervision of
 U.S. ARMY ENGINEER DISTRICT, TULSA
 CORPS OF ENGINEERS

LEGEND

- △ Monument
- Original Corner
- Iron Pin
- 2" Iron Pipe

William A. Gilbert
 REGISTERED PROFESSIONAL ENGINEER