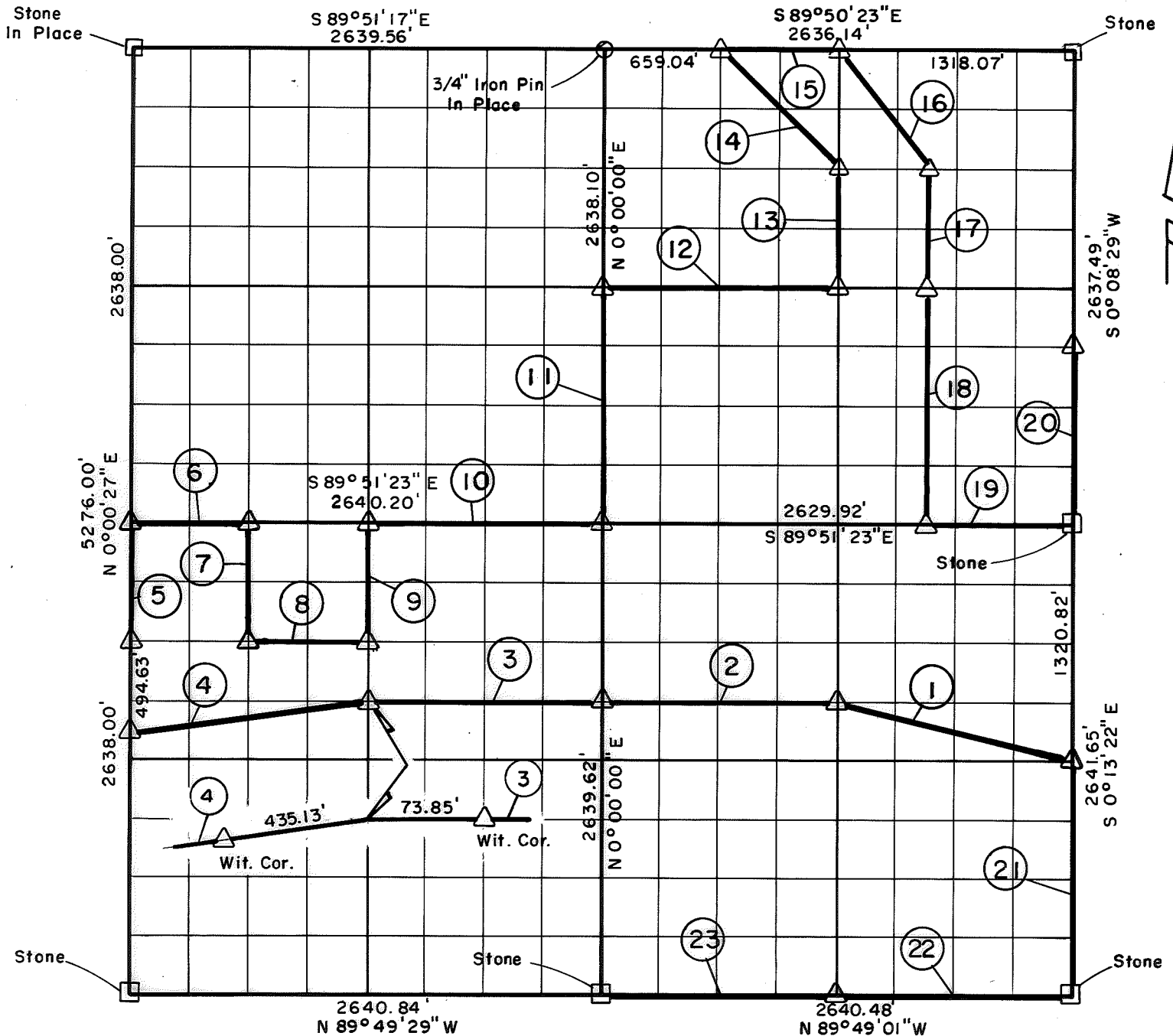


PARTIAL BOUNDARY SURVEYS
OOLOGAH LAKE, AREA "A"
VERDIGRIS RIVER, OKLAHOMA
 Performed Under Contract Number DACW 56-77-C-0052

SEC. 11, T. 26 N., R. 16 E., COUNTY NOWATA



Course No.	Distance	Bearing	Course No.	Distance	Bearing
1	1359.83'	N 75° 47' 17" W	14	933.05'	N 44° 52' 13" W
2	1316.91'	N 89° 50' 27" W	15	659.03'	S 89° 50' 23" E
3	1320.19'	N 89° 50' 38" W	16	824.54'	S 36° 44' 17" E
4	1330.03'	S 83° 02' 06" W	17	659.41'	S 0° 05' 42" W
5	659.50'	N 0° 00' 27" E	18	1318.81'	S 0° 05' 42" W
6	660.05'	S 89° 51' 23" E	19	821.85'	S 89° 51' 23" E
7	659.62'	S 0° 00' 29" W	20	989.06'	N 0° 08' 29" E
8	660.08'	S 89° 50' 53" E	21	1320.83'	S 0° 13' 22" E
9	659.71'	N 0° 00' 20" E	22	1320.24'	N 89° 49' 01" W
10	1320.10'	S 89° 51' 23" E	23	1320.24'	N 89° 49' 01" W
11	1319.05'	N 0° 00' 00" E			
12	1316.55'	S 89° 50' 56" E			
13	659.44'	N 0° 04' 09" E			

Field Book No. 0-293 Date 1977

CERTIFICATE OF SURVEY

I Hereby Certify That The Above Plat is a True and Correct Representation of The Survey Made in Sec. 11, T. 26 N., R. 16 E.

CRAIG & KEITHLINE
 Consulting Engineers

For

U.S. ARMY ENGINEER DISTRICT, TULSA
 CORPS OF ENGINEERS

Δ MONUMENT
 □ ORIGINAL CORNER
 ○ IRON PIN

SHEET 1 of 1

Jimmie Dale Nickle
 Jimmie Dale Nickle
 Registered Land Surveyor No. 78