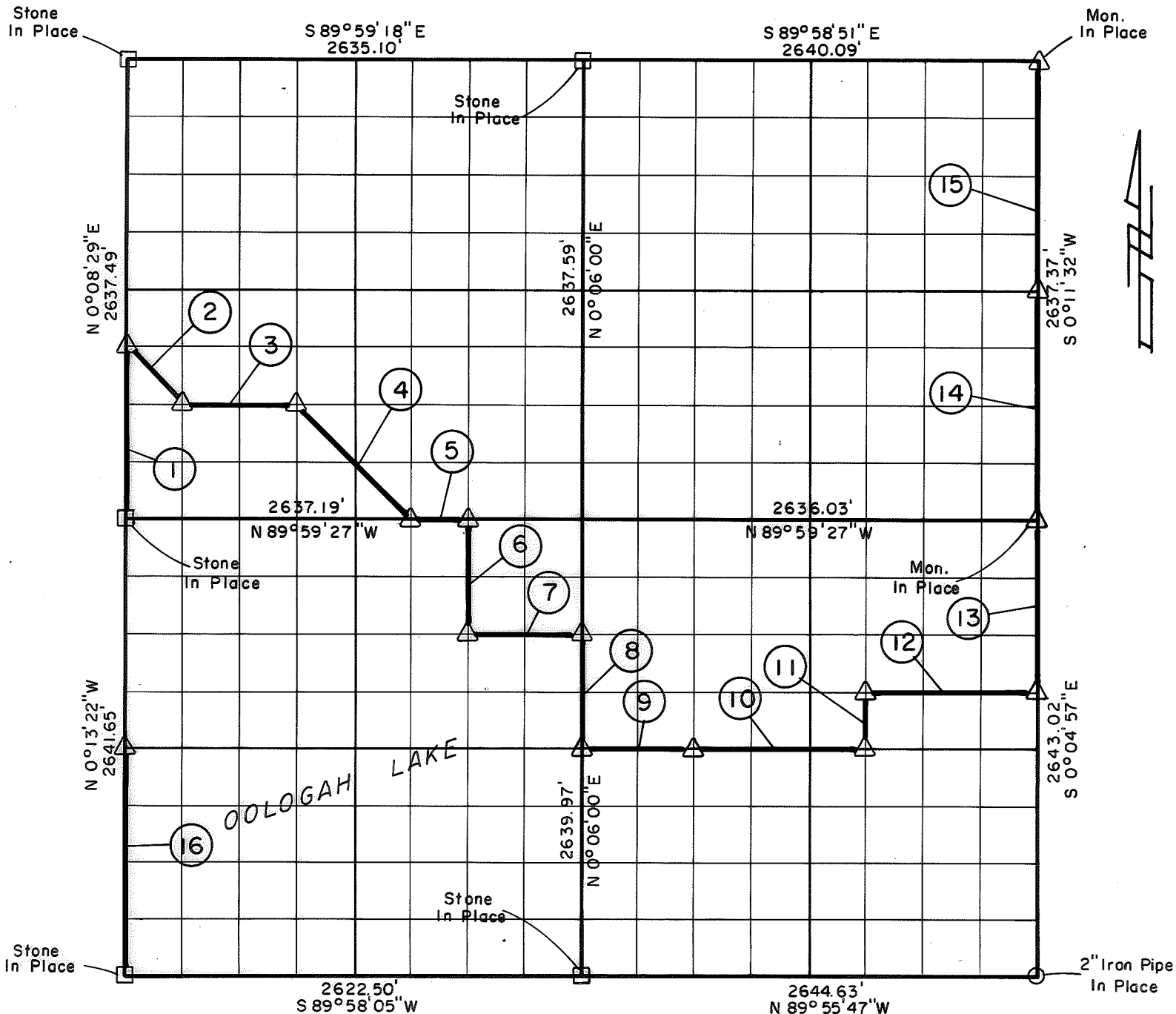


PARTIAL BOUNDARY SURVEYS
OOLOGAH LAKE, AREA "A"
VERDIGRIS RIVER, OKLAHOMA

Performed Under Contract Number DACW 56-77-C-0052

SEC. 12, T. 26 N., R. 16 E., COUNTY NOWATA



Course No.	Distance	Bearing	Course No.	Distance	Bearing
1	989.06'	N 0° 08' 29" E	14	1318.68'	N 0° 11' 32" E
2	465.64'	S 44° 54' 50" E	15	1318.69'	N 0° 11' 32" E
3	659.17'	S 89° 59' 27" E	16	1320.83'	N 0° 13' 22" W
4	931.50'	S 44° 55' 39" E			
5	329.65'	S 89° 59' 27" E			
6	660.10'	S 0° 01' 11" W			
7	658.37'	N 89° 59' 58" E			
8	659.99'	S 0° 06' 00" W			
9	660.07'	S 89° 57' 32" E			
10	990.11'	S 89° 57' 32" E			
11	330.23'	N 0° 00' 55" W			
12	989.71'	S 89° 58' 01" E			
13	991.13'	N 0° 04' 57" W			

Field Book No. 0-294 Date 1977

CERTIFICATE OF SURVEY

I Hereby Certify That The Above Plat is a True and Correct Representation of The Survey Made in Sec. 12, T. 26 N., R. 16 E.

CRAIG & KEITHLINE
 Consulting Engineers

For

U.S. ARMY ENGINEER DISTRICT, TULSA
 CORPS OF ENGINEERS

Δ MONUMENT
 □ ORIGINAL CORNER
 O IRON PIN

SHEET 1 of 1

Jimmie Dale Nickle
 Jimmie Dale Nickle
 Registered Land Surveyor No. 78