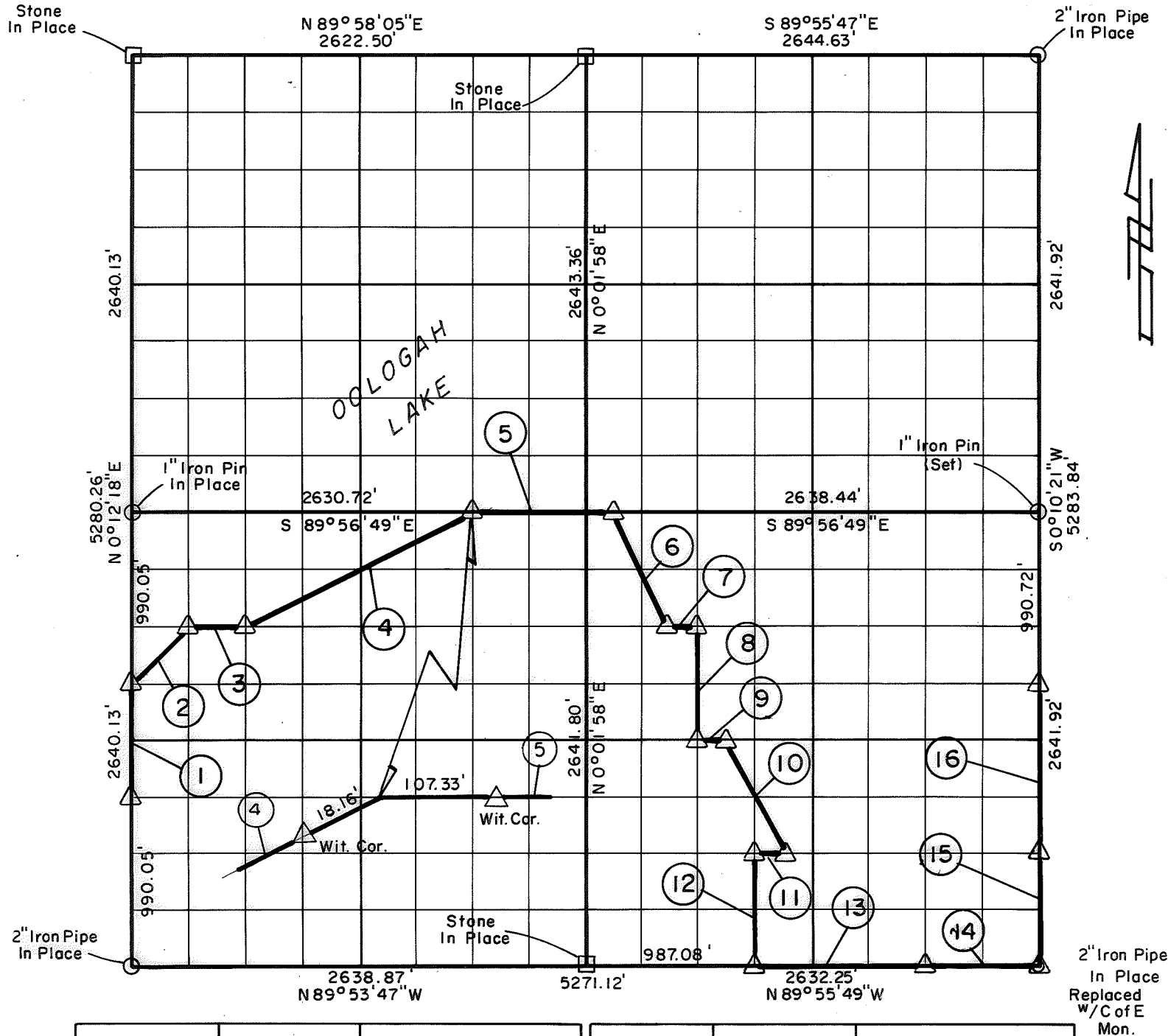


**PARTIAL BOUNDARY SURVEYS**  
**OOLOGAH LAKE, AREA "A"**  
**VERDIGRIS RIVER, OKLAHOMA**

Performed Under Contract Number DACW 56-77-C-0052

SEC. 13 , T. 26 N. , R. 16 E. , COUNTY NOWATA



Course No.	Distance	Bearing	Course No.	Distance	Bearing
1	660.03'	N 0° 12' 18" E	14	658.06'	S 89° 55' 49" E
2	466.61'	N 45° 03' 32" E	15	660.48'	N 0° 10' 21" E
3	329.09'	S 89° 56' 10" E	16	990.72'	N 0° 10' 21" E
4	1472.83'	N 63° 25' 36" E			
5	822.58'	S 89° 56' 49" E			
6	738.21'	S 26° 28' 40" E			
7	164.80'	S 89° 56' 41" E			
8	660.48'	S 0° 04' 02" W			
9	164.70'	S 89° 56' 32" E			
10	737.91'	S 26° 25' 15" E			
11	164.61'	N 89° 56' 23" W			
12	660.49'	S 0° 05' 03" W			
13	987.09'	S 89° 55' 49" E			

Field Book No. 0-295 Date 1977

**CRAIG & KEITHLINE**  
 Consulting Engineers

For

I Hereby Certify That The Above Plat is a True and Correct Representation of The Survey Made in Sec. 13 U.S. ARMY ENGINEER DISTRICT, TULSA CORPS OF ENGINEERS

Δ MONUMENT  
 □ ORIGINAL CORNER  
 ○ IRON PIN

SHEET 1 of 1

CERTIFICATE OF SURVEY

I Hereby Certify That The Above Plat is a True and Correct Representation of The Survey Made in Sec. 13 T. 26 N. R. 16 E.

*Jimmie Dale Nickle*  
 Jimmie Dale Nickle  
 Registered Land Surveyor No. 78