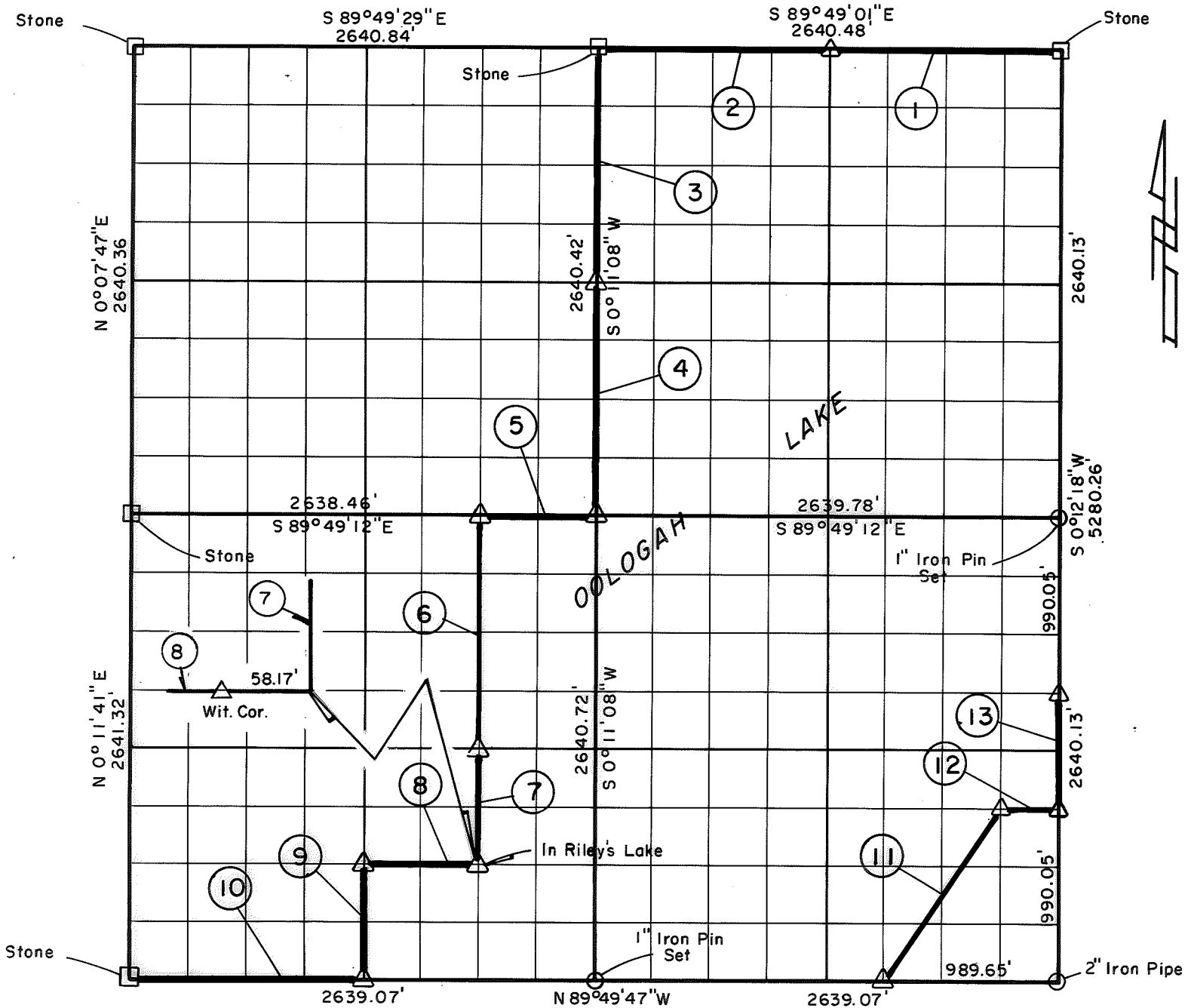


PARTIAL BOUNDARY SURVEYS
OOLOGAH LAKE, AREA "A"
VERDIGRIS RIVER, OKLAHOMA

Performed Under Contract Number DACW 56-77-C-0052

SEC. 14, T. 26 N., R. 16 E., COUNTY NOWATA



Course No.	Distance	Bearing
1	1320.24'	N 89° 49' 01" W
2	1320.24'	N 89° 49' 01" W
3	1320.21'	S 0° 11' 08" W
4	1320.21'	S 0° 11' 08" W
5	659.61'	N 89° 49' 12" W
6	1320.43'	S 0° 11' 18" W
7	660.21'	S 0° 11' 18" W
8	659.71'	N 89° 49' 43" W
9	660.25'	S 0° 11' 29" W
10	1319.53'	N 89° 49' 47" W
11	1190.08'	N 33° 52' 05" E
12	329.91'	S 89° 49' 38" E
13	660.03'	N 0° 12' 18" E

Course No.	Distance	Bearing

Field Book No. 0-296 Date 1977

CERTIFICATE OF SURVEY

I Herby Certify That The Above Plat is a True and Correct Representation of The Survey Made in Sec. 14

T 26 N., R 16 E

CRAIG & KEITHLINE
 Consulting Engineers

For

U.S. ARMY ENGINEER DISTRICT, TULSA
 CORPS OF ENGINEERS

Δ MONUMENT
 □ ORIGINAL CORNER
 ○ IRON PIN

Jimmie Dale Nickle
 Jimmie Dale Nickle
 Registered Land Surveyor No. 78

SHEET 1 of 1