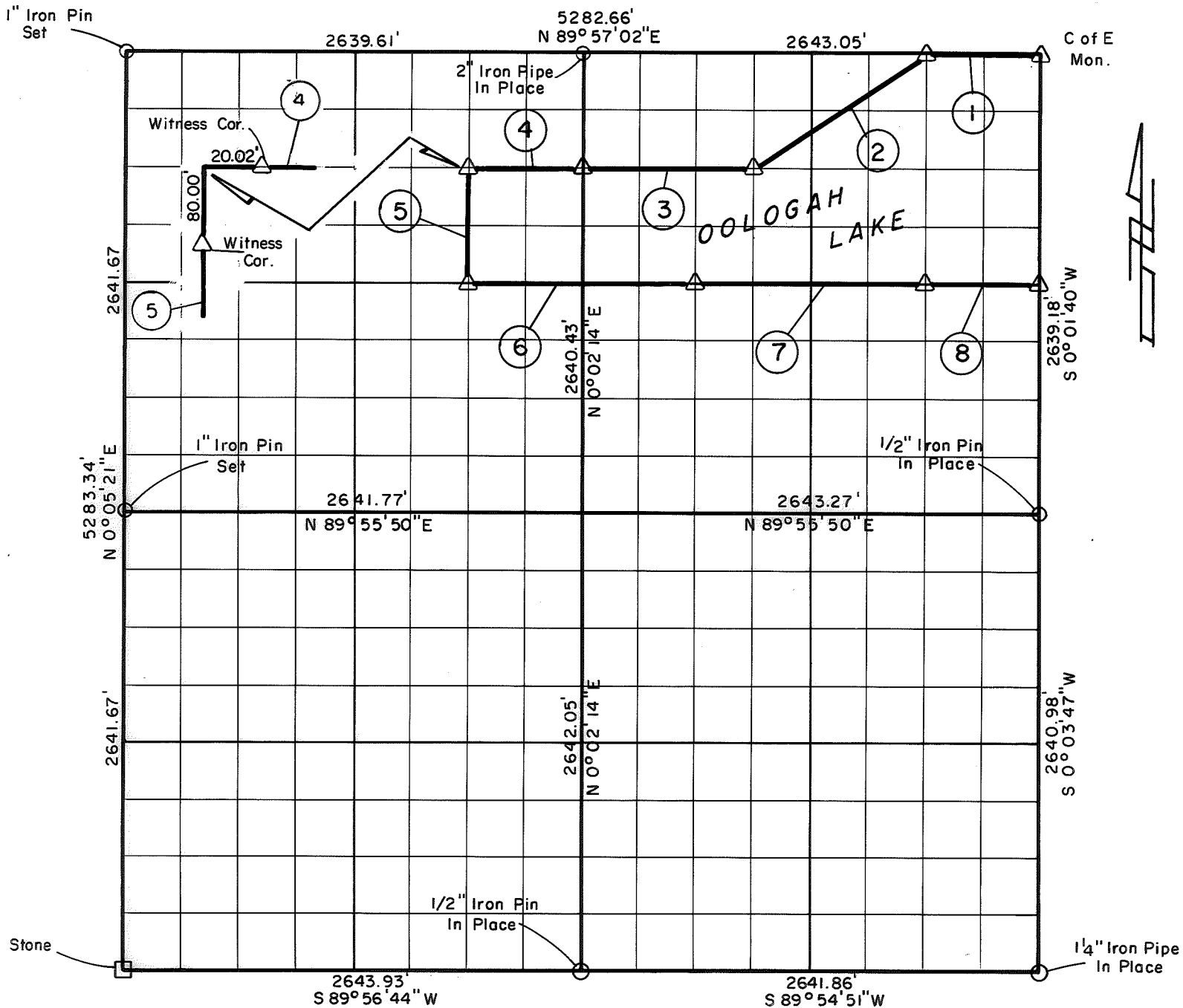


**PARTIAL BOUNDARY SURVEYS**  
**OOLOGAH LAKE, AREA "A"**  
**VERDIGRIS RIVER, OKLAHOMA**

Performed Under Contract Number DACW 56-77-C-0052

SEC. 21 , T. 26 N , R. 16 E , COUNTY NOWATA



Course No.	Distance	Bearing
1	660.76'	S 89° 57' 02" W
2	1191.52'	S 56° 19' 05" W
3	991.13'	S 89° 56' 54" W
4	660.02'	S 89° 56' 53" W
5	660.17'	S 0° 02' 59" W
6	1320.94'	N 89° 56' 32" E
7	1321.55'	N 89° 56' 33" E
8	660.78'	N 89° 56' 33" E

Course No.	Distance	Bearing

Field Book No. 0-297 Date 1977

CERTIFICATE OF SURVEY

I Hereby Certify That The Above Plat is a True and Correct Representation of The Survey Made in Sec. 21 T. 26 N., R. 16 E.

**CRAIG & KEITHLINE**  
 Consulting Engineers

For  
**U.S. ARMY ENGINEER DISTRICT, TULSA**  
**CORPS OF ENGINEERS**

Δ MONUMENT  
 □ ORIGINAL CORNER  
 ○ IRON PIN

SHEET 1 of 1

*Jimie Dale Nickle*  
 Registered Land Surveyor No. 78