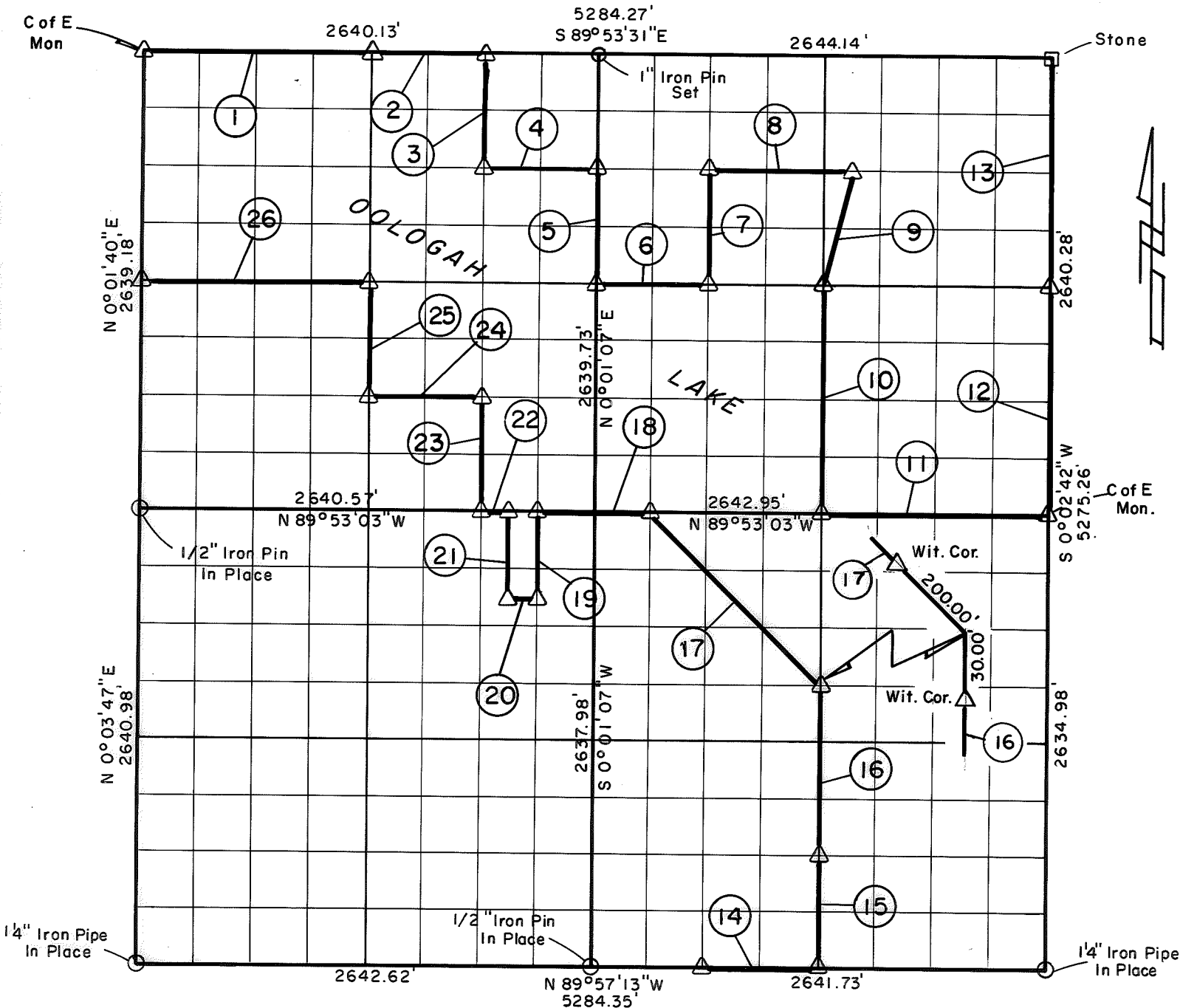


PARTIAL BOUNDARY SURVEYS
OOLOGAH LAKE, AREA "A"
VERDIGRIS RIVER, OKLAHOMA

Performed Under Contract Number DACW 56-77-C-0052

SEC. 22 , T. 26 N. , R. 16 E. , COUNTY NOWATA



Course No.	Distance	Bearing	Course No.	Distance	Bearing
1	1320.07'	S 89° 53' 31" E	14	660.43'	S 89° 57' 13" E
2	660.03'	S 89° 53' 31" E	15	659.11'	N 0° 01' 55" E
3	659.90'	S 0° 01' 15" W	16	988.66'	N 0° 01' 55" E
4	660.06'	S 89° 53' 29" E	17	1400.93'	N 44° 59' 48" W
5	659.93'	S 0° 01' 07" W	18	660.44'	N 89° 53' 03" W
6	660.99'	S 89° 53' 21" E	19	494.69'	S 0° 01' 27" W
7	659.96'	N 0° 01' 47" E	20	165.06'	N 89° 53' 48" W
8	826.40'	S 89° 53' 30" E	21	494.73'	N 0° 01' 37" E
9	680.18'	S 14° 06' 16" W	22	165.04'	N 89° 53' 03" W
10	1319.98'	S 0° 02' 28" W	23	659.90'	N 0° 01' 15" E
11	1321.47'	S 89° 53' 03" E	24	660.11'	N 89° 53' 12" W
12	1320.14'	N 0° 02' 42" E	25	659.88'	N 0° 01' 24" E
13	1320.14'	N 0° 02' 42" E	26	1320.18'	N 89° 53' 21" W

Field Book No. 0-298 Date 1977

CRAIG & KEITHLINE
 Consulting Engineers

For

U.S. ARMY ENGINEER DISTRICT, TULSA
 CORPS OF ENGINEERS

Δ MONUMENT
 □ ORIGINAL CORNER
 ○ IRON PIN

SHEET 1 of 1

CERTIFICATE OF SURVEY
 I hereby certify that the
 Above Map is a True and
 Correct Representation of
 The Survey Made in Sec. 22
 T. 26 N., R. 16 E. L.S. 78

Jimie Dale Nickle
 Registered Land Surveyor No. 78