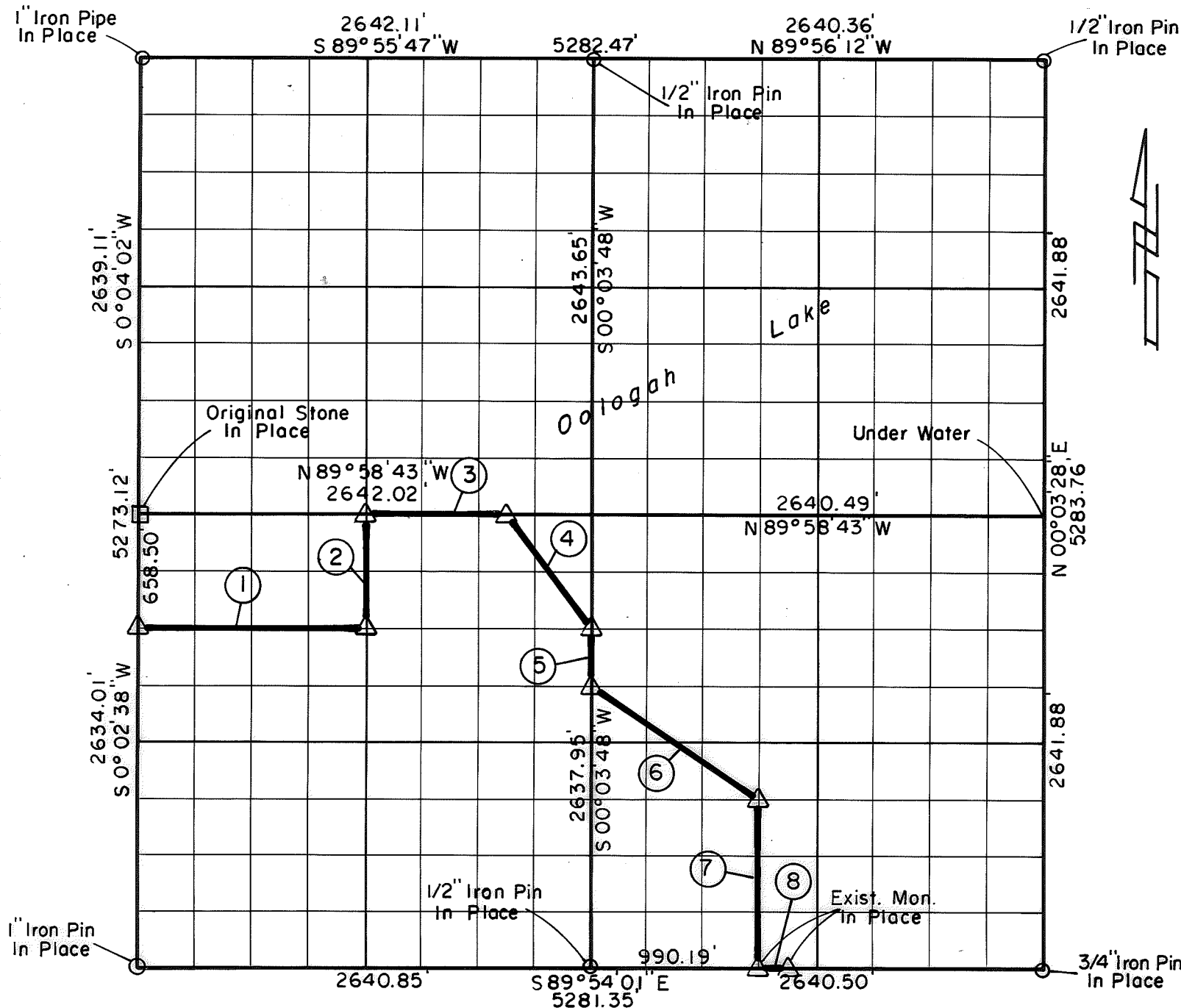


PARTIAL BOUNDARY SURVEYS
 OOLOGAH LAKE, AREA "A"
 VERDIGRIS RIVER, OKLAHOMA

Performed Under Contract Number DACW 56-76-C-0120

SEC. 26 , T. 26 N. , R. 16 E. , COUNTY NOWATA



Course No.	Distance	Bearing	Course No.	Distance	Bearing
1	1320.71'	S 89°57'33" E			
2	658.99'	N 00°03'13" E			
3	825.63'	S 89°58'43" E			
4	824.53'	S 36°51'51" E			
5	329.74'	S 00°03'48" W			
6	1189.77'	S 56°16'02" E			
7	989.78'	S 00°03'40" W			
8	120.66'	S 89°54'01" E			

Field Book No. 0-269 Date 1976

CERTIFICATE OF SURVEY

CRAIG & KEITHLINE
 Consulting Engineers

I Hereby Certify That The Above Plat is a True and Correct Representation of The Survey Made in Sec. 26 U.S. ARMY ENGINEER DISTRICT, TULSA T. 26 N. , R. 16 E. CORPS OF ENGINEERS

Δ MONUMENT
 □ ORIGINAL CORNER
 ○ IRON PIN

Charles R. Keithline
 CHARLES R. KEITHLINE
 Registered Land Surveyor No. 517

SHEET 1 of 1