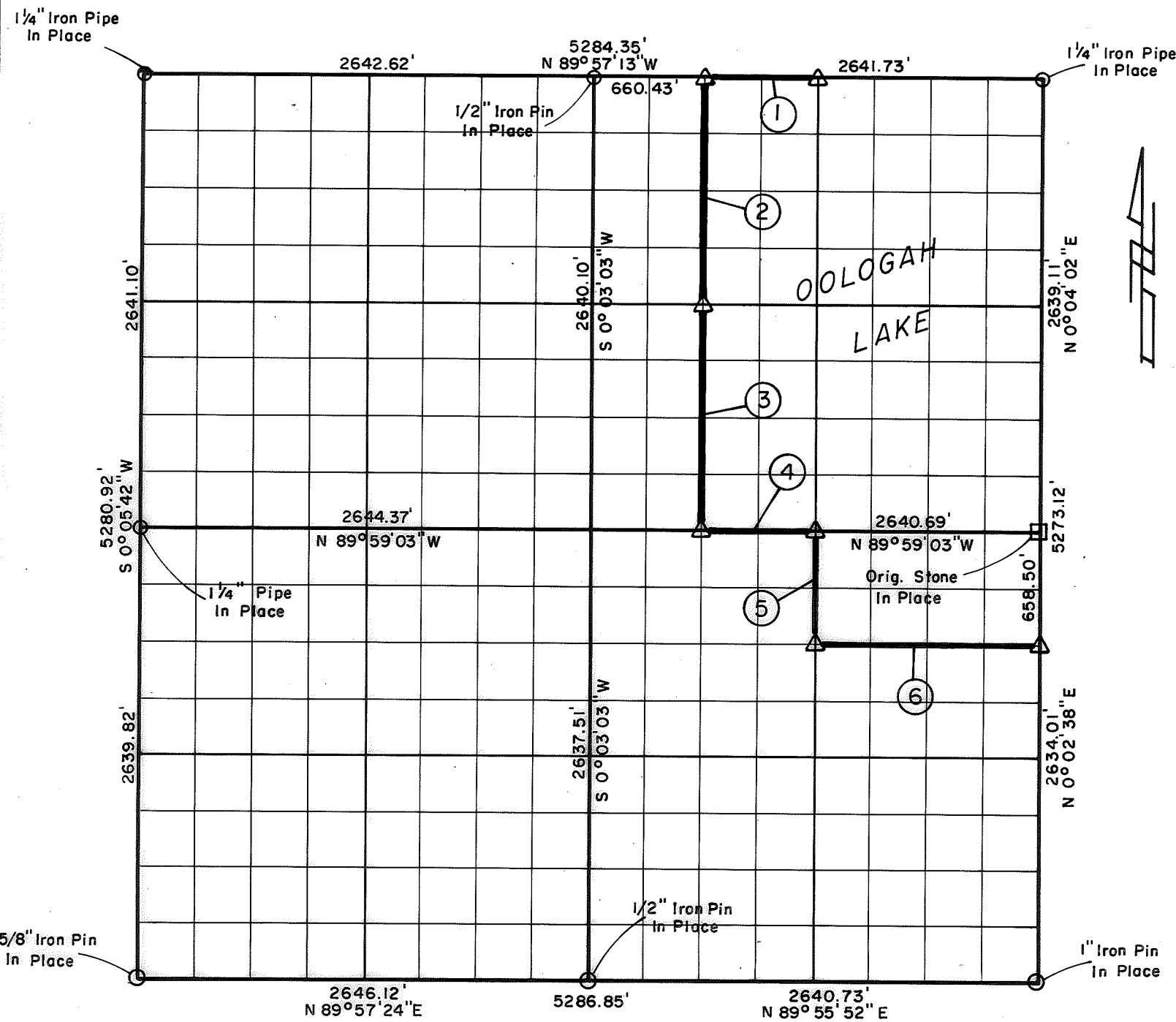


PARTIAL BOUNDARY SURVEYS  
 OOLOGAH LAKE, AREA "A"  
 VERDIGRIS RIVER, OKLAHOMA  
 Performed Under Contract Number DACW 56-76-C-0120

SEC. 27 , T. 26N , R. 16E , COUNTY NOWATA



Course No.	Distance	Bearing	Course No.	Distance	Bearing
1	660.43'	N 89° 57' 13" W			
2	1319.92'	S 0° 03' 18" W			
3	1319.93'	S 0° 03' 18" W			
4	660.17'	S 89° 59' 03" E			
5	658.94'	S 0° 02' 50" W			
6	1320.35'	N 89° 59' 40" E			

Field Book No. 0-268 Date 1976

CERTIFICATE OF SURVEY  
 I Hereby Certify That The Above Plat is a True and Correct Representation of The Survey Made in Sec. 27 U.S. ARMY ENGINEER DISTRICT, TULSA  
 T. 26N, R. 16E  
 CRAIG & KEITHLINE  
 Consulting Engineers  
 For  
 CORPS OF ENGINEERS

Δ MONUMENT  
 □ ORIGINAL CORNER  
 ○ IRON PIN

*Charles R. Keithline*  
 CHARLES R. KEITHLINE  
 Registered Land Surveyor No. 517  
 SHEET 1 of 1