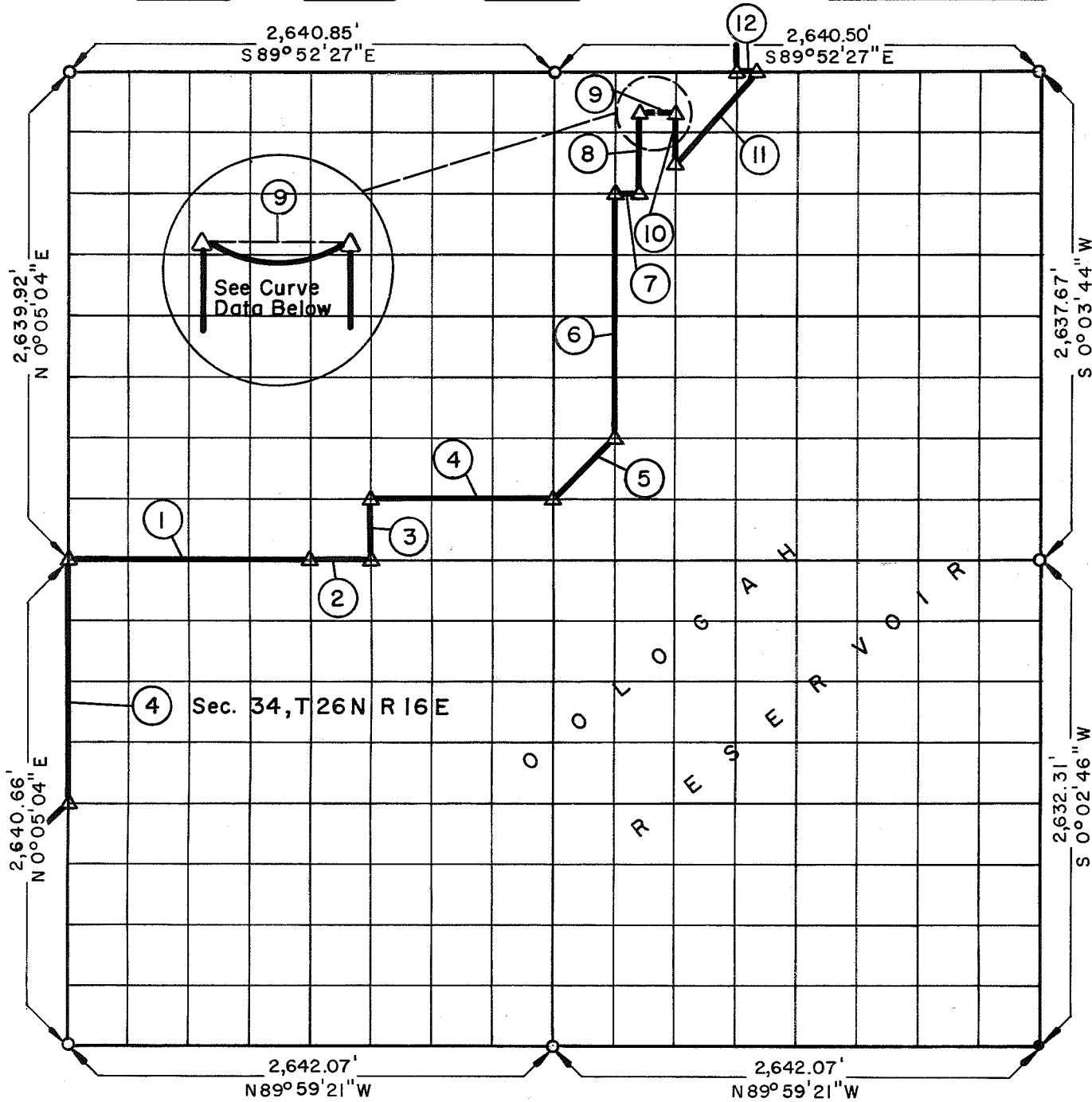


PARTIAL BOUNDARY SURVEYS

VERDIGRIS RIVER, OKLAHOMA

SEC. 35 T 26 N R 16 E COUNTY NOWATA



Course No.	Distance	Bearing	Course No.	Distance	Bearing
1	1,320.73	S 89° 53' 55" E			
2	330.18	S 89° 53' 55" E			
3	329.91	N 0° 04' 34" E			
4	990.52	S 89° 53' 44" E			
5	466.51	N 45° 06' 44" E			
6	1,319.33	N 0° 04' 12" E			
7	110.07	S 89° 52' 49" E			
8	378.83	N 0° 04' 08" E			
*9	220.03	N 89° 07' 56" E			
10	217.72	S 0° 04' 08" W			
11	668.92	N 42° 25' 47" E			
12	120.66	N 89° 52' 27" W			

*Course No. 9 is the chord to the boundary line along the curving ϵ of S. H. 60

CURVE DATA

$\Delta = 31^{\circ} 11' 15''$
 $D = 14^{\circ}$
 $R = 409.26'$
 $T = 114.22'$
 $L = 222.77'$
 $L_c = 220.03'$

CERTIFICATE OF SURVEY

I HEREBY CERTIFY THAT THE ABOVE PLAT IS A TRUE AND CORRECT REPRESENTATION OF THE SURVEY MADE IN SECTION 35, T 26 N, R 16 E, NOWATA COUNTY, OKLAHOMA

Jack C. Cox
 REGISTERED LAND SURVEYOR

Field Book No. 0-246, Date 7-19-71

K. N. COX & ASSOCIATES - ENGINEERS

Under the Supervision of

U.S. ARMY ENGINEER DISTRICT, TULSA
 CORPS OF ENGINEERS

SHEET 1 of 1

LEGEND

- Δ MONUMENT
- \square ORIGINAL CORNER
- \circ IRON PIN
- \bullet 1" PIPE