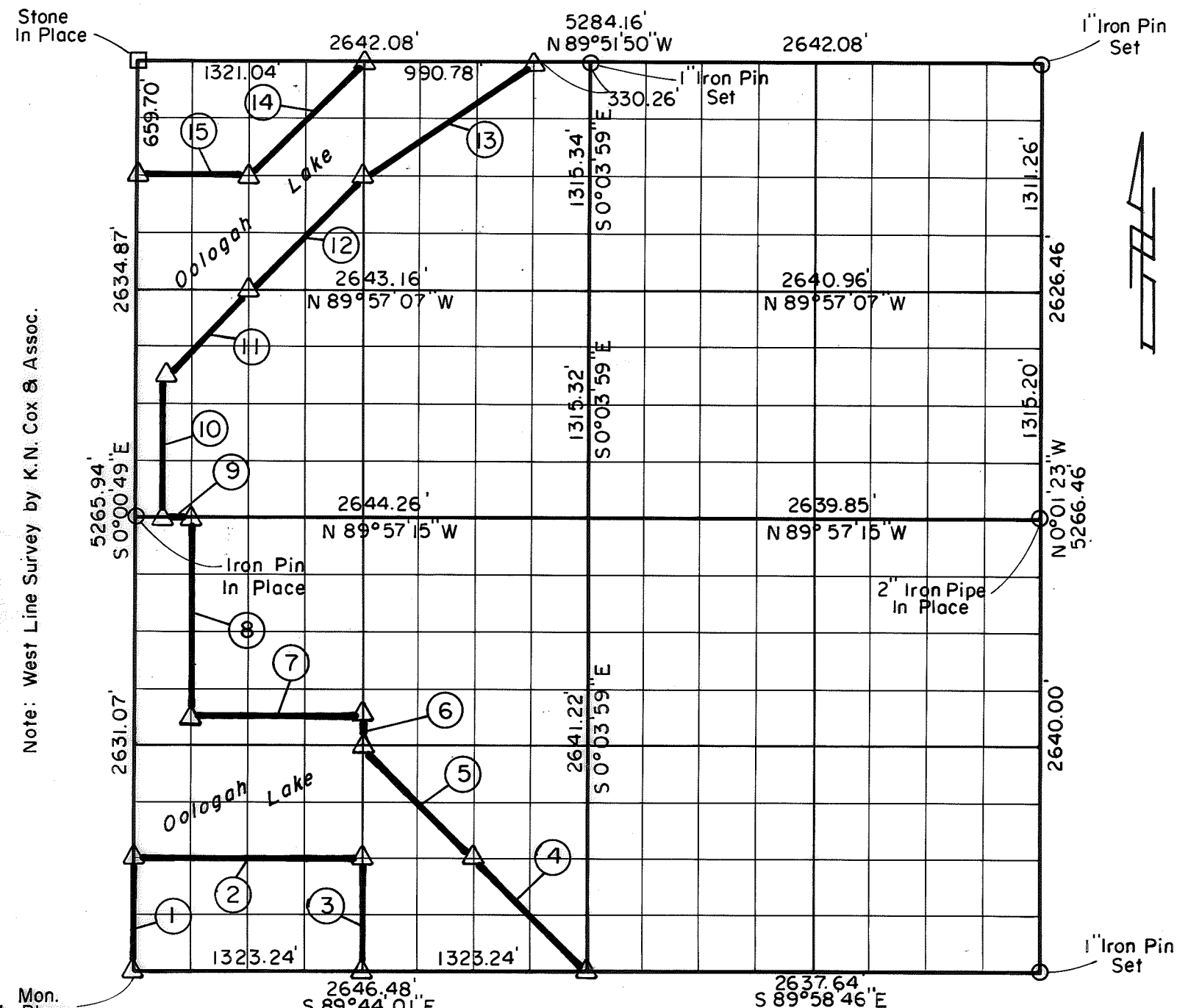


PARTIAL BOUNDARY SURVEYS
OOLOGAH LAKE, AREA "A"
VERDIGRIS RIVER, OKLAHOMA

Performed Under Contract Number DACW 56-76-C-0120

SEC. 4, T. 26 N., R. 16 E., COUNTY NOWATA



Note: West Line Survey by K.N. Cox & Assoc.

Course No.	Distance	Bearing	Course No.	Distance	Bearing
1	657.77'	N 0°00'49" W	14	931.85'	S 45°06'42" W
2	1322.96'	S 89°47'19" E	15	660.66'	N 89°54'29" W
3	659.04'	S 0°02'24" E			
4	936.36'	N 45°00'00" W			
5	936.36'	N 45°00'00" W			
6	164.76'	N 0°02'24" W			
7	991.96'	N 89°51'27" W			
8	1151.65'	N 0°01'13" W			
9	165.27'	N 89°57'15" W			
10	822.16'	N 0°01'01" W			
11	698.94'	N 45°08'56" E			
12	932.30'	N 45°05'43" E			
13	1188.04'	N 56°27'54" E			

Field Book No. 0-278 Date 1976

CERTIFICATE OF SURVEY

I Hereby Certify That The Above Plat is a True and Correct Representation of The Survey Made in Sec. 4 T. 26 N. R. 16 E.

CRAIG & KEITHLINE
 Consulting Engineers

For

U.S. ARMY ENGINEER DISTRICT, TULSA
 CORPS OF ENGINEERS

- Δ MONUMENT
- ORIGINAL CORNER
- IRON PIN

Charles R. Keithline
 CHARLES R. KEITHLINE
 Registered Land Surveyor No. 517