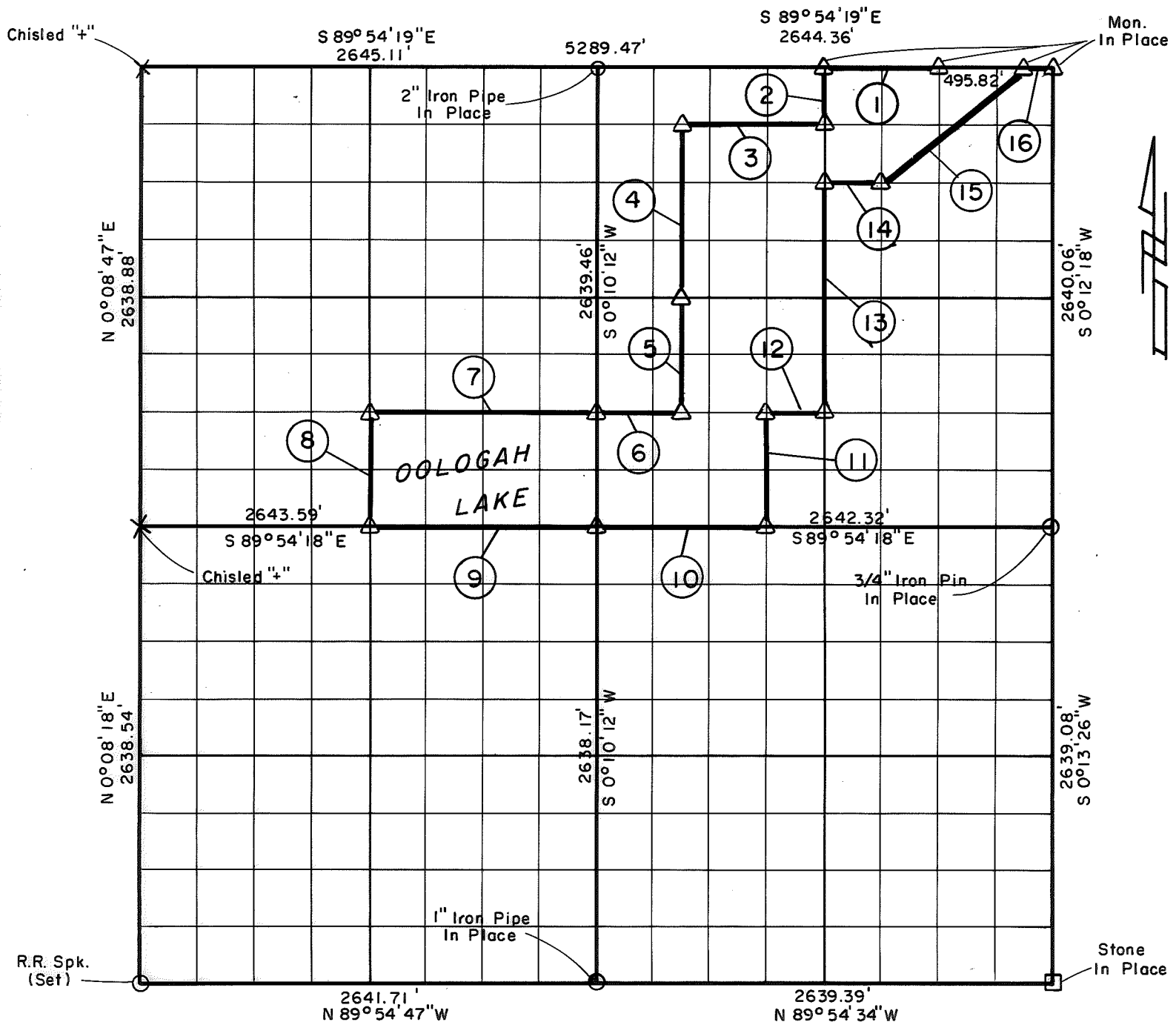


**PARTIAL BOUNDARY SURVEYS**  
**OOLOGAH LAKE, AREA "A"**  
**VERDIGRIS RIVER, OKLAHOMA**

Performed Under Contract Number DACW 56-77-C-0052

SEC. 8, T. 26 N., R. 16 E., COUNTY NOWATA



Course No.	Distance	Bearing	Course No.	Distance	Bearing
1	661.09'	N 89° 54' 19" W	14	330.48'	S 89° 54' 19" E
2	329.97'	S 0° 11' 15" W	15	1058.18'	N 51° 32' 15" E
3	826.28'	N 89° 54' 19" W	16	165.27'	S 89° 54' 19" E
4	989.84'	S 0° 10' 36" W			
5	659.90'	S 0° 10' 36" W			
6	495.53'	N 89° 54' 18" W			
7	1321.98'	N 89° 54' 18" W			
8	659.79'	S 0° 09' 29" W			
9	1321.80'	S 89° 54' 18" E			
10	990.87'	S 89° 54' 18" E			
11	659.92'	N 0° 11' 00" E			
12	330.35'	S 89° 54' 18" E			
13	1319.88'	N 0° 11' 15" E			

Field Book No. 0-290 Date 1977

**CERTIFICATE OF SURVEY**

I hereby certify that the above plat is a true and correct representation of the survey made in Sec. 8, T. 26 N., R. 16 E., S. 79

**CRAIG & KEITHLINE**  
 Consulting Engineers

For

**U.S. ARMY ENGINEER DISTRICT, TULSA**  
**CORPS OF ENGINEERS**

Δ MONUMENT  
 □ ORIGINAL CORNER  
 ○ IRON PIN

T. 26 N., R. 16 E., S. 79

SHEET 1 of 1

*Jimmie Dale Nickle*  
 Jimmie Dale Nickle  
 Registered Land Surveyor No. 78