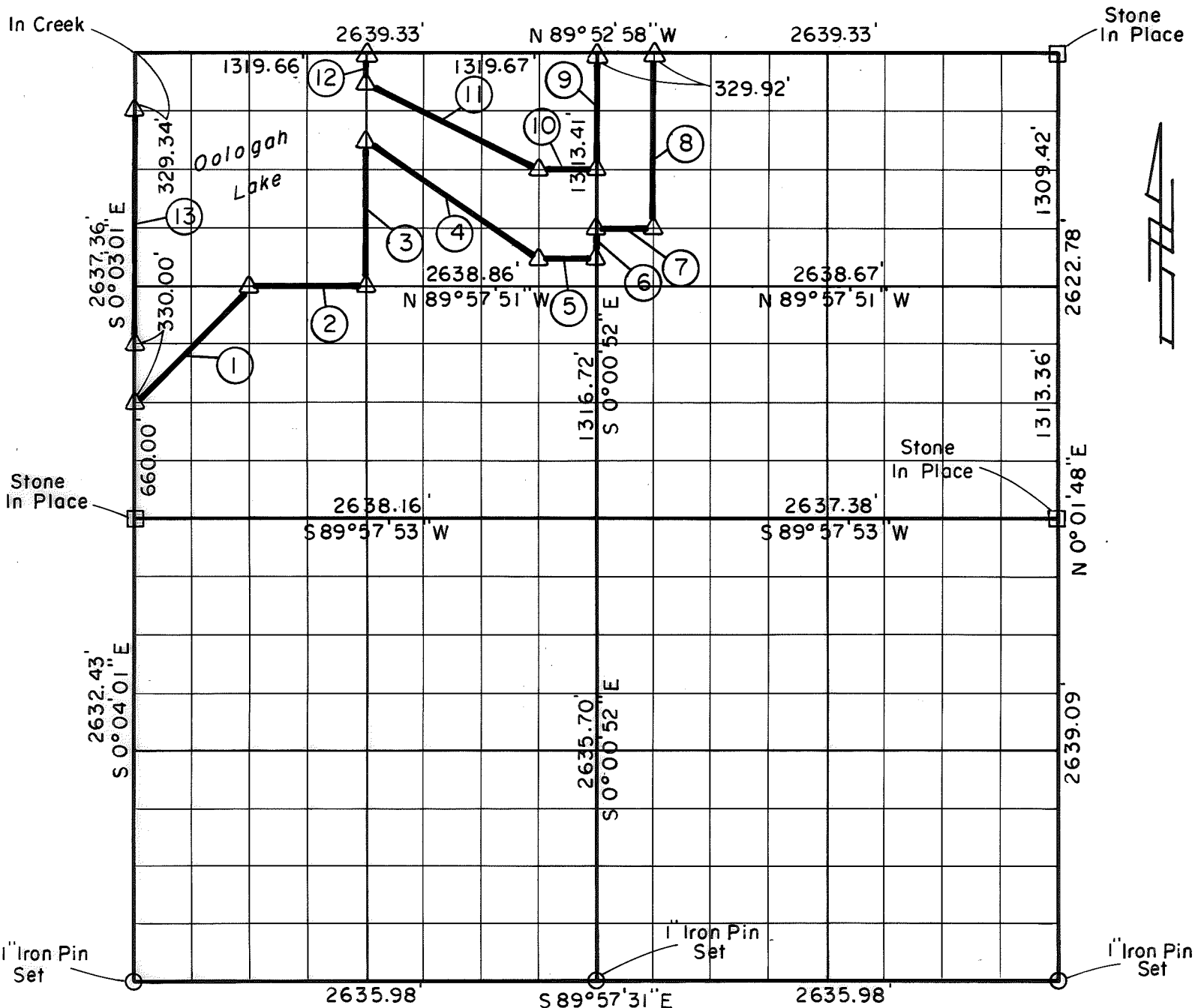


PARTIAL BOUNDARY SURVEYS
OOLOGAH LAKE, AREA "A"
VERDIGRIS RIVER, OKLAHOMA

Performed Under Contract Number DACW 56-76-C-0120

SEC. 4 , T. 26 N., R. 17 E., COUNTY NOWATA



Course No.	Distance	Bearing	Course No.	Distance	Bearing
1	932.48'	N 44° 58' 50" E			
2	659.72'	S 89° 57' 51" E			
3	822.12'	N 0° 01' 56" W			
4	1188.97'	S 56° 22' 11" E			
5	329.86'	S 89° 57' 15" E			
6	164.18'	N 0° 00' 52" W			
7	329.86'	S 89° 56' 38" E			
8	984.68'	N 0° 00' 32" W			
9	656.70'	S 0° 00' 52" E			
10	329.89'	N 89° 55' 25" W			
11	1106.62'	N 63° 27' 09" W			
12	164.42'	N 0° 01' 56" W			
13	1318.02'	S 0° 03' 01" E			

Field Book No. 0-274 Date 1976

CERTIFICATE OF SURVEY

CRAIG & KEITHLINE
 Consulting Engineers

I Hereby Certify That The
 Above Plat is a True and
 Correct Representation of
 The Survey Made in Sec. 4 U.S. ARMY ENGINEER DISTRICT, TULSA
 T. 26 N., R. 17 E.
 CORPS OF ENGINEERS

Δ MONUMENT
 □ ORIGINAL CORNER
 ○ IRON PIN

Charles R. Keithline SHEET 1 of 1
 CHARLES R. KEITHLINE
 Registered Land Surveyor No. 517