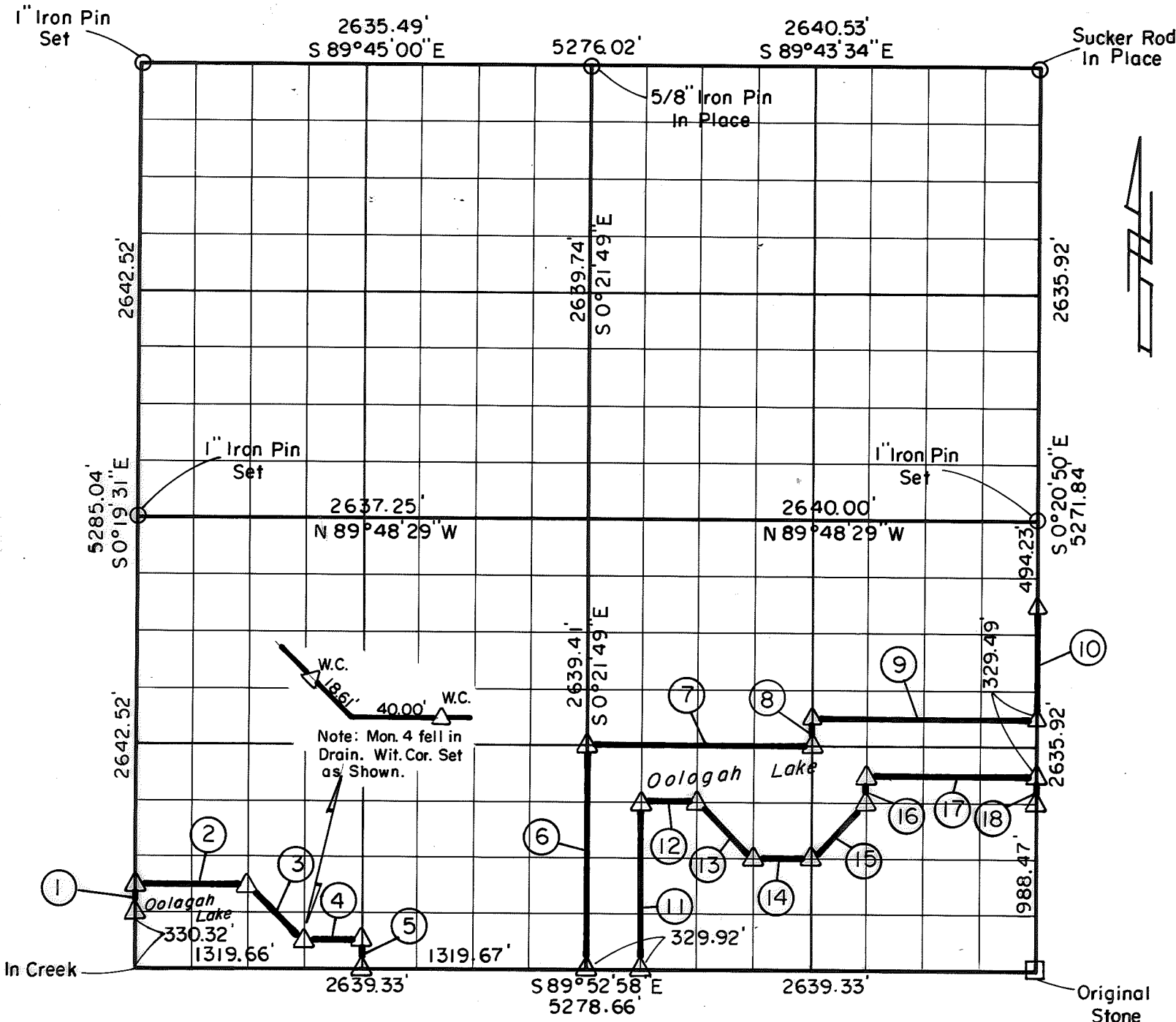


PARTIAL BOUNDARY SURVEYS
OOLOGAH LAKE, AREA "A"
VERDIGRIS RIVER, OKLAHOMA

Performed Under Contract Number DACW 56-76-C-0120

SEC. 33, T. 27 N., R. 17 E., COUNTY NOWATA



Course No.	Distance	Bearing	Course No.	Distance	Bearing
1	165.16'	N 0° 19' 31" W	14	329.94'	S 89° 51' 51" E
2	659.74'	S 89° 52' 08" E	15	464.40'	N 44° 54' 59" E
3	468.61'	S 45° 04' 37" E	16	164.83'	N 0° 21' 12" W
4	329.90'	S 89° 52' 41" E	17	989.86'	S 89° 51' 01" E
5	165.06'	S 0° 20' 40" E	18	164.75'	S 0° 20' 50" E
6	1319.71'	N 0° 21' 49" W			
7	1319.83'	S 89° 50' 44" E			
8	164.85'	N 0° 21' 20" W			
9	1319.85'	S 89° 50' 28" E			
10	658.98'	N 0° 20' 50" W			
11	989.62'	N 0° 21' 42" W			
12	329.95'	S 89° 51' 18" E			
13	468.53'	S 45° 07' 22" E			

Field Book No. 0-276 Date 1976

CERTIFICATE OF SURVEY

I Hereby Certify That The Above Plat is a True and Correct Representation of The Survey Made in Sec. 33, U.S. ARMY ENGINEER DISTRICT, TULSA T. 27 N., R. 17 E.

CRAIG & KEITHLINE
 Consulting Engineers

For

CORPS OF ENGINEERS

Δ MONUMENT
 □ ORIGINAL CORNER
 ○ IRON PIN

Charles R. Keithline SHEET 1 of 1

CHARLES R. KEITHLINE
 Registered Land Surveyor No. 517