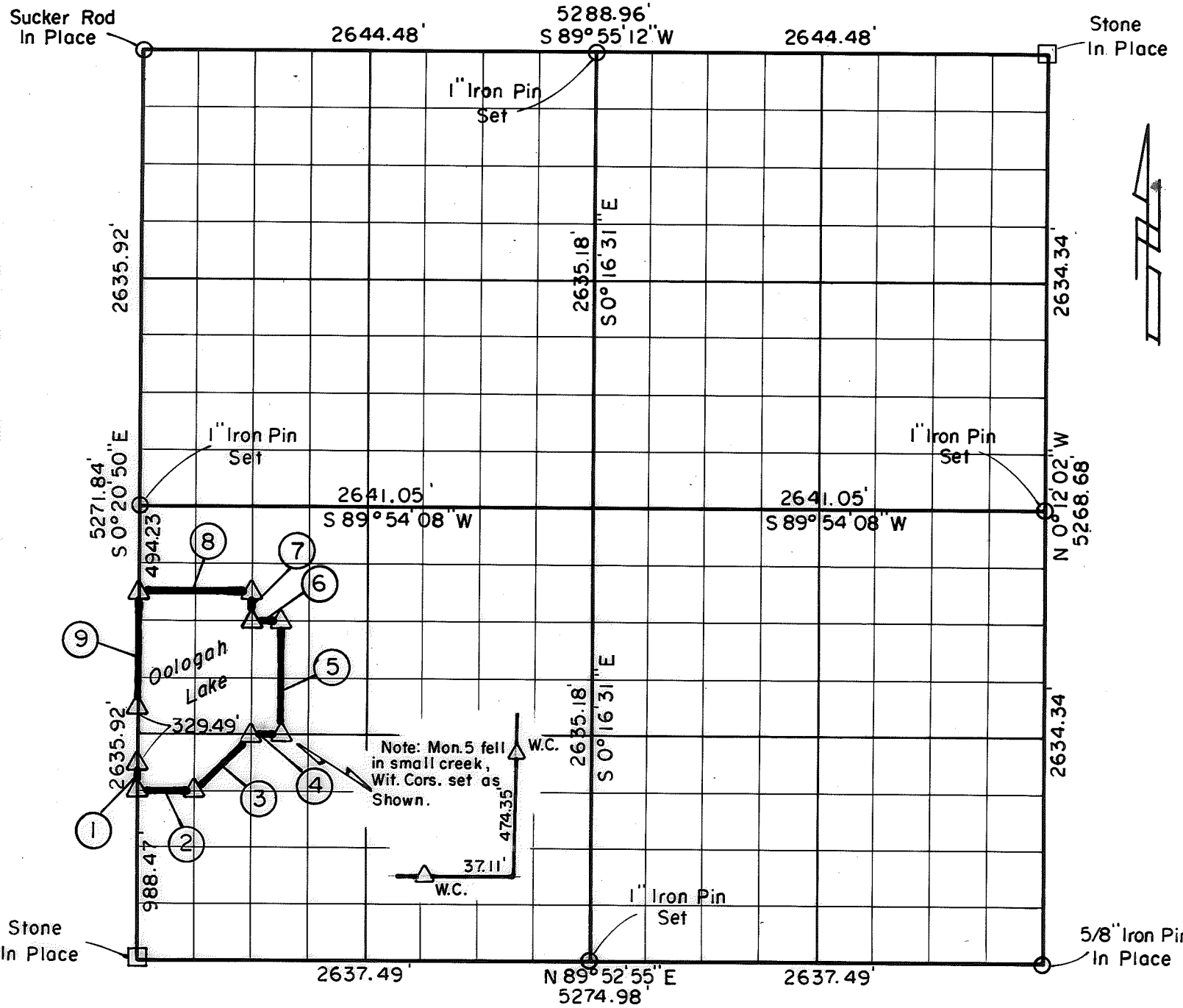


PARTIAL BOUNDARY SURVEYS
 OOLOGAH LAKE, AREA "A"
 VERDIGRIS RIVER, OKLAHOMA
 Performed Under Contract Number DACW 56-76-C-0120

SEC. 34 , T. 27 N. , R. 17 E. , COUNTY NOWATA



Course No.	Distance	Bearing	Course No.	Distance	Bearing
1	164.75'	S 0° 20' 50" E			
2	329.85'	N 89° 53' 22" E			
3	465.32'	N 44° 48' 49" E			
4	164.95'	N 89° 53' 31" E			
5	658.92'	N 0° 19' 29" W			
6	165.01'	S 89° 53' 49" W			
7	164.73'	N 0° 19' 45" W			
8	660.10'	S 89° 53' 54" W			
9	658.98'	S 0° 20' 50" E			

CERTIFICATE OF SURVEY Field Book No. 0-277 Date 1976

CRAIG & KEITHLINE
 Consulting Engineers

I Hereby Certify That The Above Plat is a True and Correct Representation of The Survey Made in Sec. 34 U.S. ARMY ENGINEER DISTRICT, TULSA T. 27 N. , R. 17 E.

- Δ MONUMENT
- ORIGINAL CORNER
- IRON PIN

Charles R. Keithline SHEET 1 of 1
 CHARLES R. KEITHLINE
 Registered Land Surveyor No. 517