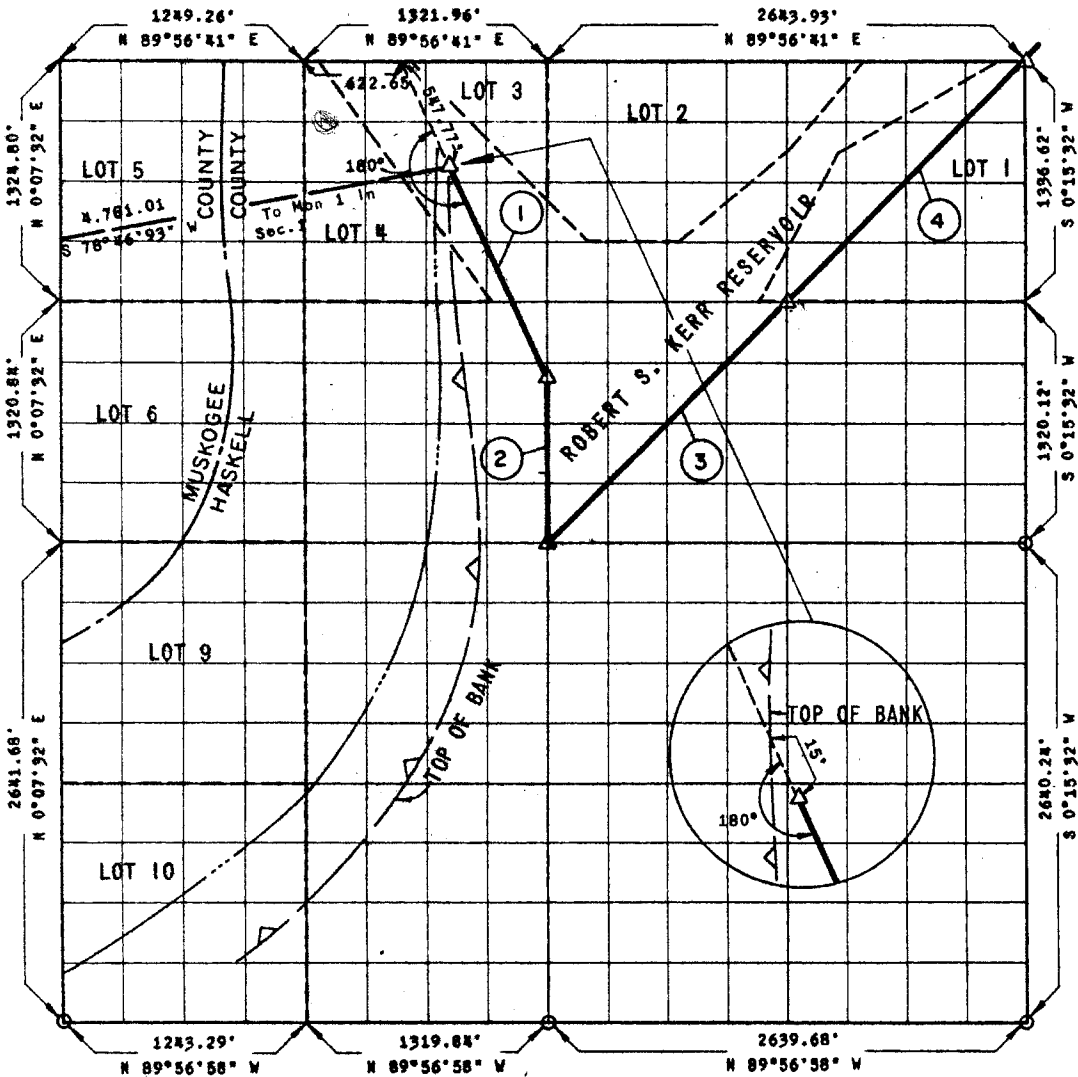


**PARTIAL BOUNDARY SURVEYS  
ROBERT S. KERR LOCK & DAM 15  
ARKANSAS RIVER, OKLAHOMA**

Performed Under Contract Number DACW 56-68-C-0103

**SEC. 6 T 10 N R 21 E COUNTY MUSKOGEE & HASKELL**



Course No.	Distance	Bearing	Course No.	Distance	Bearing
1	1302.00	S 22°00'00" E			
2	935.35	S 00°12'47" W			
3	1870.37	N 45°09'51" E			
4	1882.57	N 44°50'24" E			

Field Book No. A-2793, Date 6-12-68

**CERTIFICATE OF SURVEY**  
I HEREBY CERTIFY THAT THE ABOVE PLAT IS A TRUE AND CORRECT REPRESENTATION OF THE SURVEY MADE IN SECTION 6, T 10 N, R 21 E, MUSKOGEE & HASKELL COUNTIES, OKLAHOMA

**K.N. COX & ASSOCIATES - ENGINEERS**  
Under the Supervision of  
**U.S. ARMY ENGINEER DISTRICT, TULSA**  
**CORPS OF ENGINEERS**  
SHEET 1 of 1

**LEGEND**  
Δ MONUMENT  
□ ORIGINAL CORNER  
○ IRON PIN

*K.N. Cox*