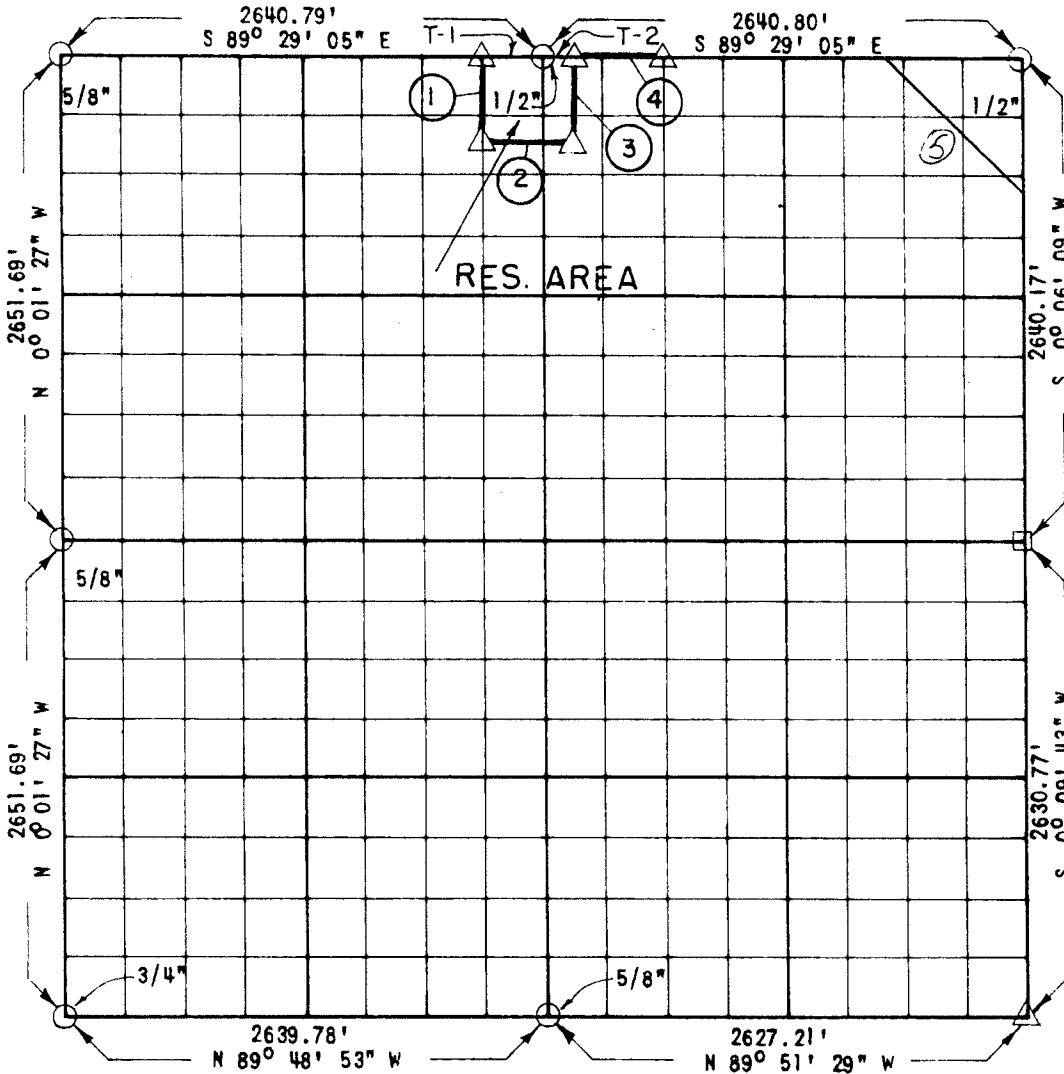


PARTIAL BOUNDARY SURVEYS
ROBERT S. KERR LOCK AND DAM 15
ARKANSAS RIVER, OKLAHOMA

Performed Under Contract Number DACW 56-68-C-0104

SEC 13 **T** 10-N **R** 22-E **COUNTY** HASKELL



Course No.	Distance	Bearing	Course No.	Distance	Bearing
1	496.25	S 0° 00' 56" E			
2	495.12	S 89° 30' 29" E			
3	496.04	N 0° 00' 25" W			
4	495.				
T-1	330.09	N 89° 29' 05" W			
T-2	165.04	N 89° 29' 05" W			
5	830.				
		1.43" 1/2 ✓			

CERTIFICATE OF SURVEY

Field Book No. A 2802 Date 6-17-68

I HEREBY CERTIFY THAT THE ABOVE PLAT IS A TRUE AND CORRECT REPRESENTATION OF THE SURVEY MADE IN SECTION 13, T-10-N, R-22-E, HASKELL COUNTY, OKLAHOMA.

Floyd H. Oakley
REGISTERED PROFESSIONAL ENGINEER

WHEELER - OAKLEY & ASSOCIATES
ENGINEERS

Under the Supervision of

U.S. ARMY ENGINEER DISTRICT, TULSA
CORPS OF ENGINEERS

SHEET 8 of 12

LEGEND

- Δ MONUMENT
- ORIGINAL CORNER
- IRON PIN
- HWY R/W MARKER