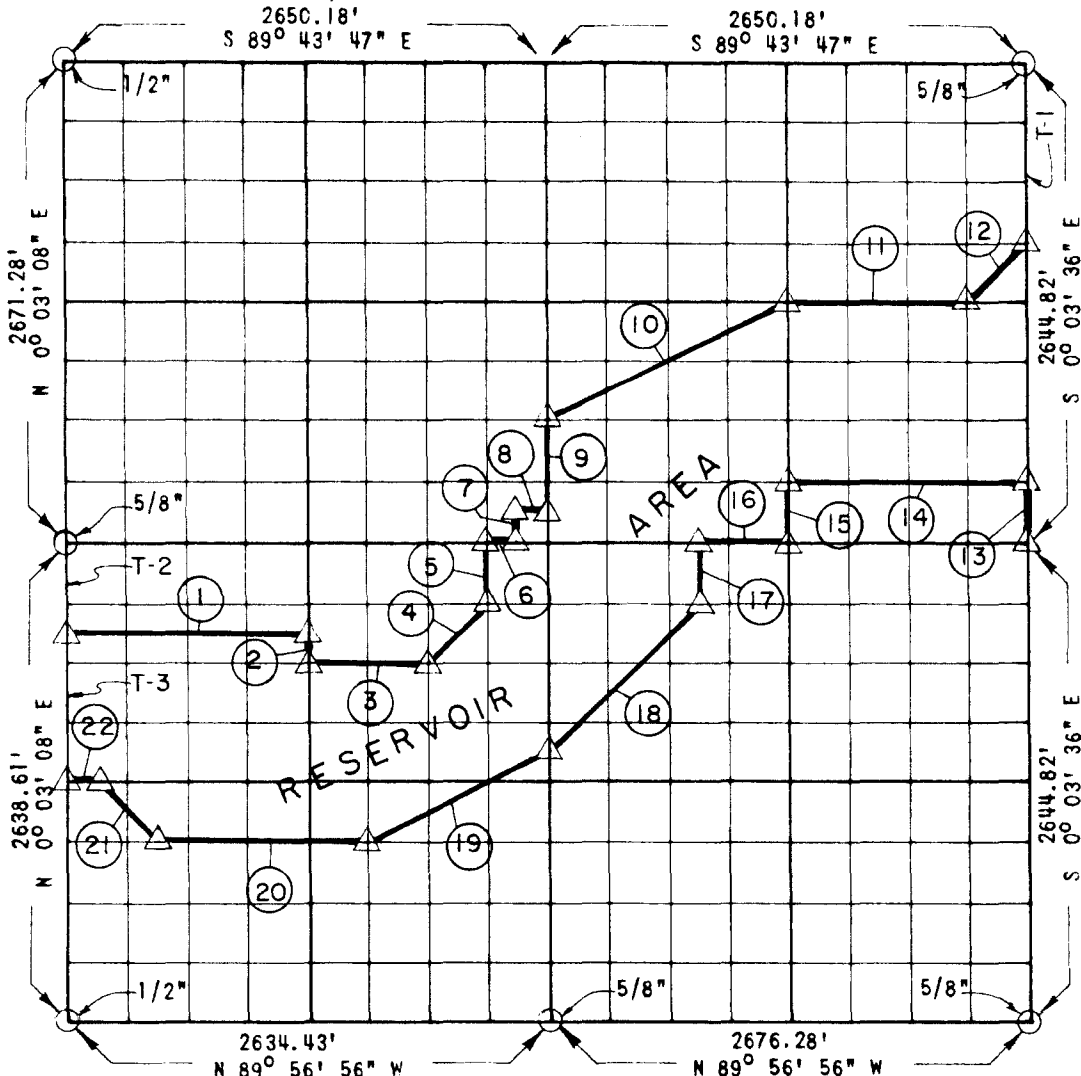


**PARTIAL BOUNDARY SURVEYS  
ROBERT S. KERR LOCK AND DAM 15  
ARKANSAS RIVER, OKLAHOMA**

Performed Under Contract Number DACW 56-68-C-0104

SEC 17 T-10-N R-22-E COUNTY HASKELL



Course No.	Distance	Bearing	Course No.	Distance	Bearing
1	1320.40	N 89° 59' 48" E	14	1330.80	N 89° 58' 49" W
2	165.00	S 0° 08' 14" W	15	331.42	S 0° 04' 53" W
3	660.07	S 89° 59' 57" E	16	499.35	S 89° 59' 03" W
4	467.65	N 45° 05' 25" E	17	330.33	S 0° 08' 03" W
5	330.16	N 0° 12' 04" E	18	1174.96	S 45° 21' 24" W
6	165.14	N 89° 59' 03" E	19	1107.63	S 63° 27' 46" W
7	166.18	N 0° 12' 42" E	20	1153.85	N 89° 58' 26" W
8	165.17	S 89° 59' 52" E	21	466.20	N 44° 56' 24" W
9	498.38	N 0° 13' 21" E	22	164.89	N 89° 58' 57" W
10	1486.28	N 63° 34' 09" E	T-1	991.80	N 0° 03' 36" W
11	996.26	S 89° 52' 23" E	T-2	494.75	N 0° 03' 08" E
12	467.82	N 45° 09' 44" E	T-3	824.56	N 0° 03' 08" E
13	330.60	N 0° 03' 36" W			

CERTIFICATE OF SURVEY Field Book No. A 2800 Date 6-17-68

I HEREBY CERTIFY THAT THE ABOVE PLAT IS A TRUE AND CORRECT REPRESENTATION OF THE SURVEY MADE IN SECTION 17, T-10-N, R-22-E, HASKELL COUNTY OKLAHOMA.

*Floyd H. Oakley*  
REGISTERED PROFESSIONAL ENGINEER

**WHEELER - OAKLEY & ASSOCIATES  
ENGINEERS**

Under the Supervision of

**U.S. ARMY ENGINEER DISTRICT, TULSA  
CORPS OF ENGINEERS**

SHEET 7 of 12

- LEGEND
- ▲ MONUMENT
  - ORIGINAL CORNER
  - IRON PIN
  - HWY R/W MARKER