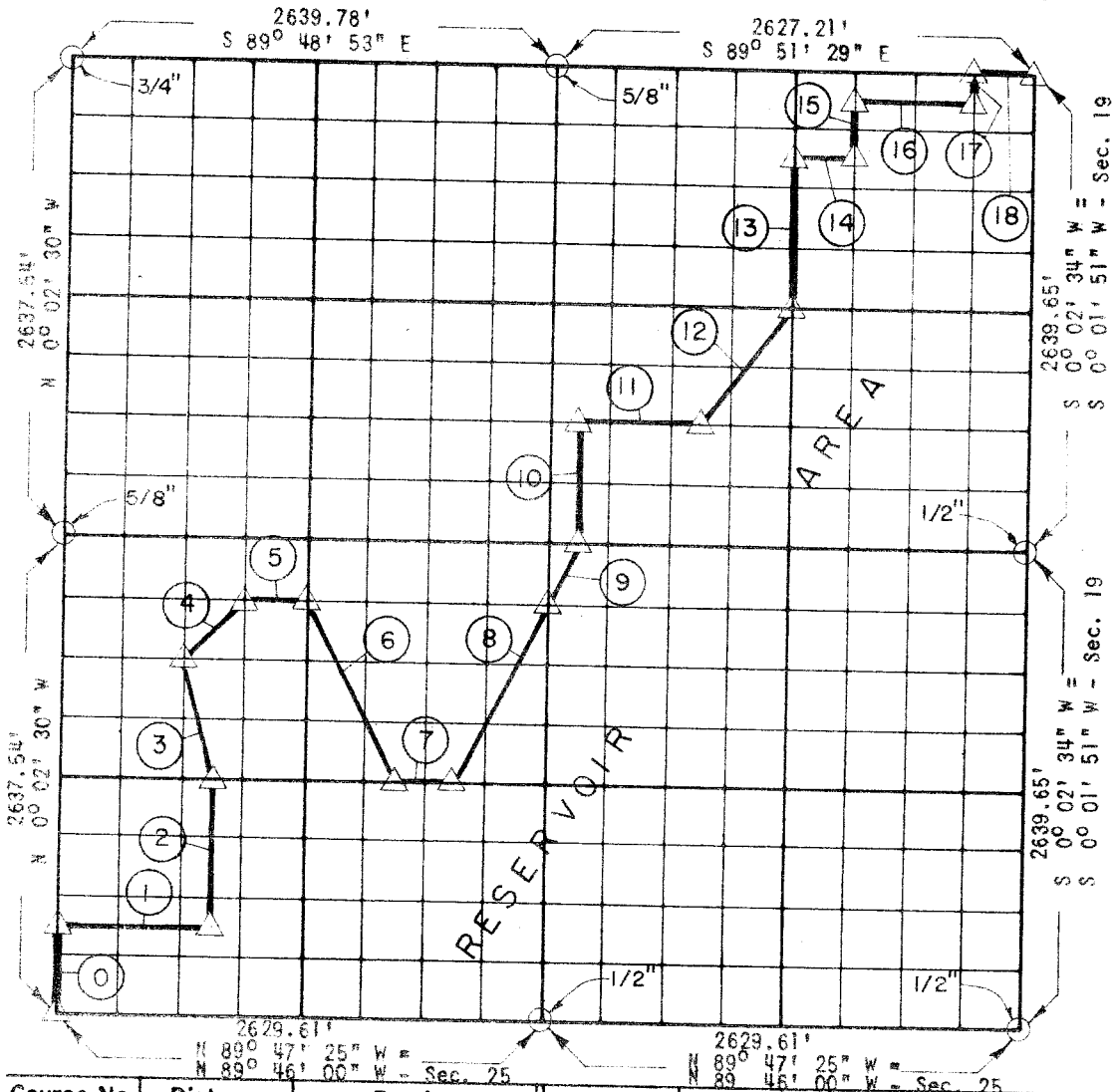


**PARTIAL BOUNDARY SURVEYS  
ROBERT S. KERR LOCK AND DAM 15  
ARKANSAS RIVER, OKLAHOMA**

Performed Under Contract Number DACW 56-68-C-0104

**SEC 24 T-10-N R-22-E COUNTY HASKELL**



Course No.	Distance	Bearing	Course No.	Distance	Bearing
0	494.53	N 0° 02' 30" W	13	824.56	N 0° 03' 21" E
1	822.05	S 89° 47' 40" E	14	328.43	S 89° 50' 59" E
2	824.33	N 0° 00' 26" W	15	329.86	N 0° 03' 09" E
3	680.25	N 14° 00' 32" W	16	656.82	S 89° 51' 19" E
4	465.14	N 45° 02' 49" E	17	164.96	N 0° 02' 46" E
5	329.25	S 89° 48' 37" E	18	328.40	S 89° 51' 29" E
6	1106.96	S 26° 27' 48" E			
7	329.01	S 89° 48' 06" E			
8	1104.72	N 26° 36' 13" E			
9	368.16	N 26° 34' 08" E			
10	659.43	N 0° 04' 02" E			
11	657.02	S 89° 49' 28" E			
12	822.56	N 36° 51' 32" E			

CERTIFICATE OF SURVEY **Field Book No. A 2803** Date **6-17-68**

I HEREBY CERTIFY THAT THE ABOVE PLAT IS A TRUE AND CORRECT REPRESENTATION OF THE SURVEY MADE IN SECTION 24, T-10-N, R-22-E, HASKELL COUNTY OKLAHOMA.

**WHEELER - OAKLEY & ASSOCIATES  
ENGINEERS**  
Under the Supervision of  
**U.S. ARMY ENGINEER DISTRICT, TULSA  
CORPS OF ENGINEERS**

- LEGEND**
- ▲ MONUMENT
  - ORIGINAL CORNER
  - IRON PIN
  - HWY R/W MARKER

*Harold M. Wheeler*