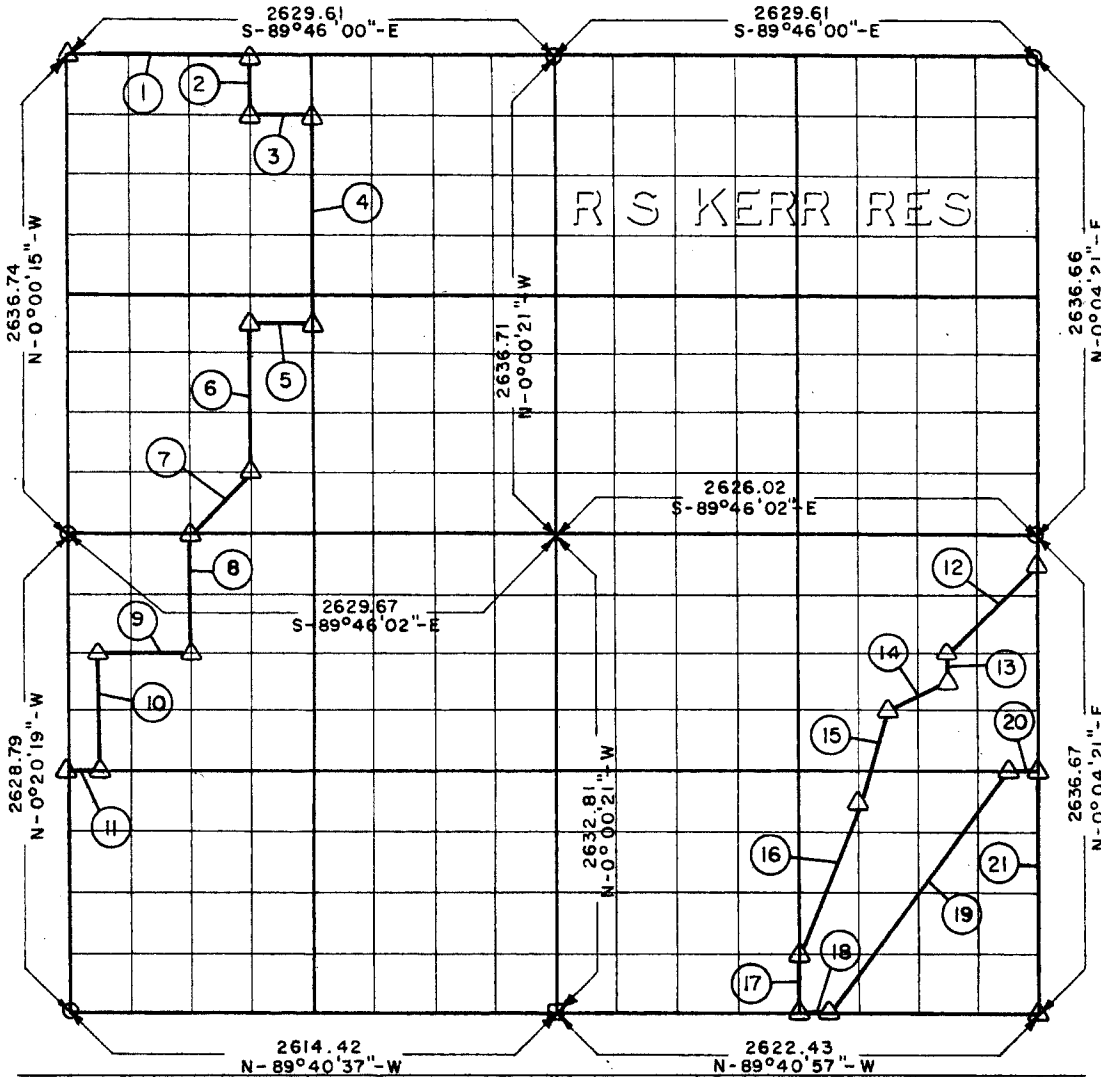


457

PARTIAL BOUNDARY SURVEYS
 ROBERT S. KERR LOCK AND DAM 15
 ARKANSAS RIVER, OKLAHOMA

Performed Under Contract Number DA-34-066-Civeng 66-219

SEC 25 T-10-N R-22-E COUNTY HASKELL



Course No.	Distance	Bearing	Course No.	Distance	Bearing
11	163.88	N-89°43'20"-W	17	329.34	N-0°02'00"-E
10	657.33	N-0°19'04"-W	15	520.02	N-18°25'52"-E
9	492.33	S-89°44'41"-E	16	884.97	N-21°47'16"-E
8	657.49	N-0°15'19"-W	14	366.59	N-63°33'35"-E
7	464.52	N-45°02'13"-E	13	164.75	N-0°03'29"-E
6	823.98	N-0°00'17"-W	12	696.52	N-45°02'13"-E
5	328.71	S-89°46'02"-E	1	986.10	S-89°46'00"-E
4	1153.57	N-0°00'18"-W	21	1318.83	S-0°04'21"-W
3	328.70	N-89°46'01"-W			
2	329.59	N-0°00'17"-W			
20	164.01	N-89°43'30"-W			
19	1641.19	S-36°52'50"-W			
18	163.90	N-89°40'57"-W			

CERTIFICATE OF SURVEY

Field Book No. A-2416 Date 4-4-66

I HEREBY CERTIFY THAT THE ABOVE PLAT IS A TRUE AND CORRECT REPRESENTATION OF THE SURVEY MADE IN SECTION 25, T-10-N, R-22-E, HASKELL COUNTY, OKLAHOMA

HOLWAY ENGINEERS INC.

Under the Supervision of

U.S. ARMY ENGINEER DISTRICT, TULSA
 CORPS OF ENGINEERS

LEGEND

- △ MONUMENT
- ORIGINAL CORN
- IRON PIN