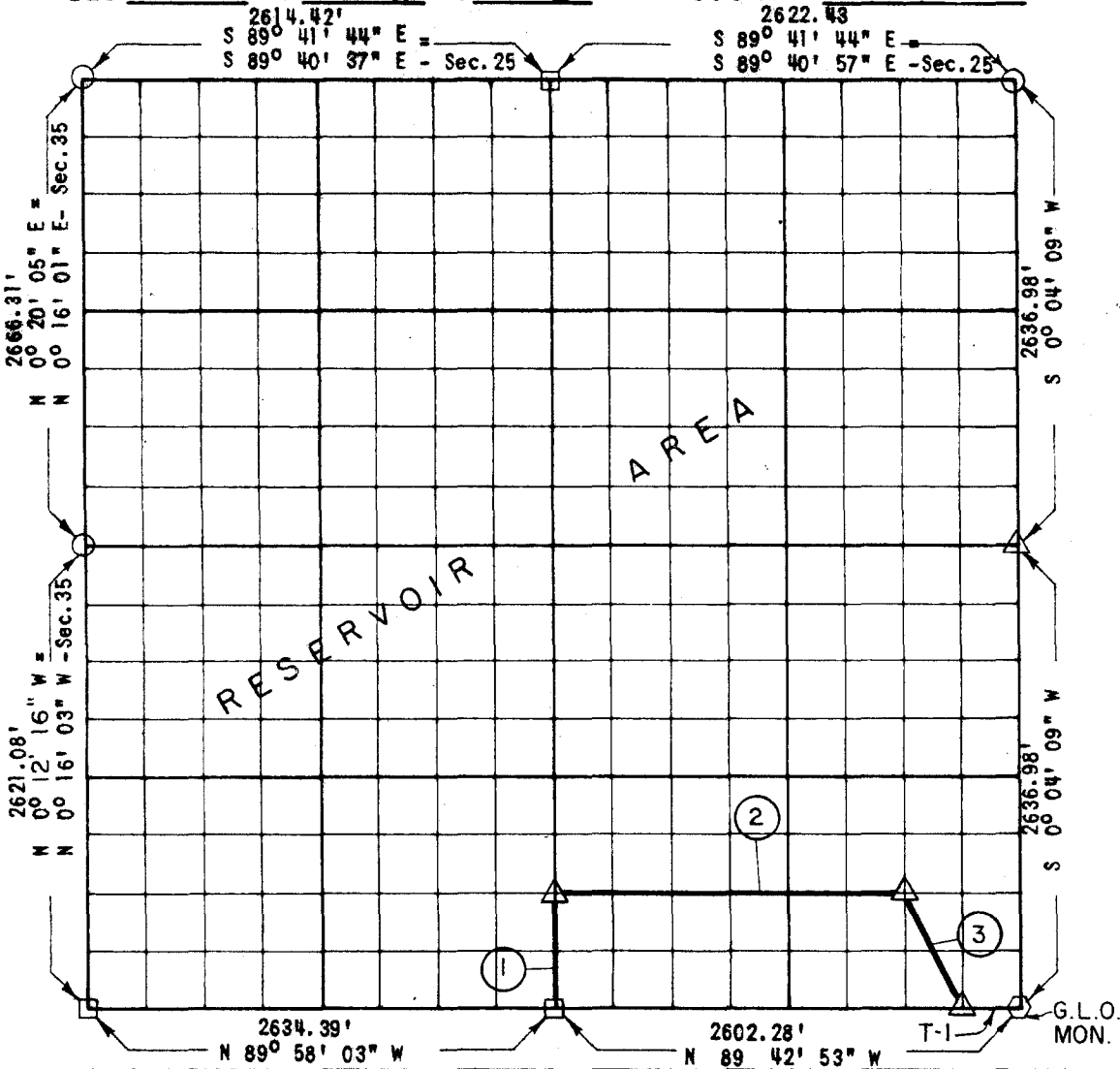


PARTIAL BOUNDARY SURVEYS
ROBERT S. KERR LOCK AND DAM 15
ARKANSAS RIVER, OKLAHOMA

Performed Under Contract Number DACW 56-68-C-0104

SEC 36 T -10-N R -22-E COUNTY HASKELL



Course No.	Distance	Bearing	Course No.	Distance	Bearing
1	655.82	N 0° 08' 59" W			
2	1953.58	S 89° 47' 25" E			
3	735.73	S 26° 13' 28" E			
T-1	325.28	S 89° 42' 53" E			
	3,345.13				

CERTIFICATE OF SURVEY Field Book No. A2804 Date 6-17-68

WHEELER - OAKLEY & ASSOCIATES
ENGINEERS

Under the Supervision of

U.S. ARMY ENGINEER DISTRICT, TULSA
CORPS OF ENGINEERS

LEGEND

- Δ MONUMENT
- ORIGINAL CORNER
- IRON PIN
- HWY R/W MARKER

I HEREBY CERTIFY THAT THE ABOVE PLAT IS A TRUE AND CORRECT REPRESENTATION OF THE SURVEY MADE IN SECTION 36, T-10-N, R-22-E, HASKELL COUNTY OKLAHOMA.

Handwritten signature