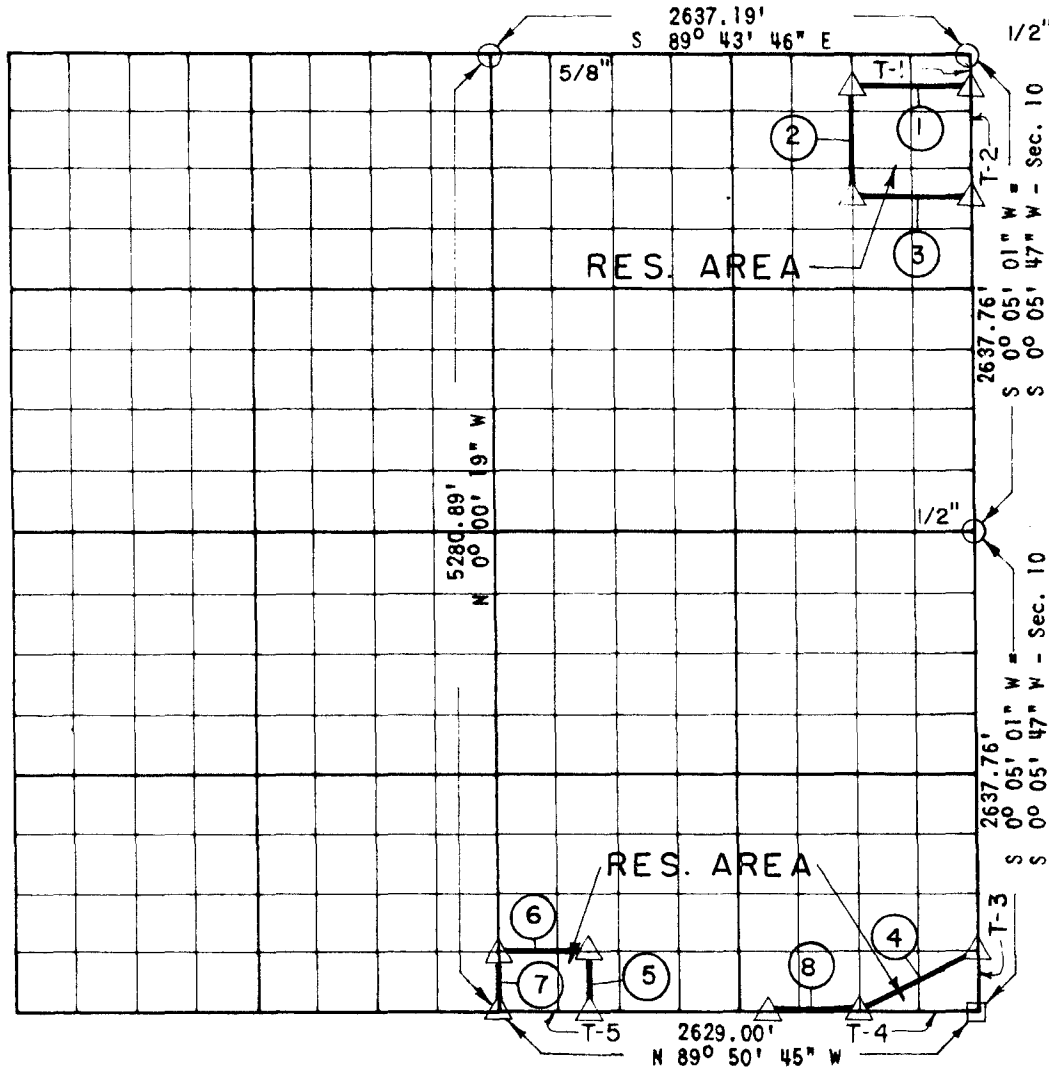


PARTIAL BOUNDARY SURVEYS
 ROBERT S. KERR LOCK AND DAM 15
 ARKANSAS RIVER, OKLAHOMA

Performed Under Contract Number DACW 56-68-C-0104

SEC 9 T-10-N R-22-E COUNTY HASKELL



Course No.	Distance	Bearing	Course No.	Distance	Bearing
1	659.23	N 89° 43' 59" W	T-5	492.94	N 89° 50' 45" W
2	659.60	S 0° 03' 41" W			
3	658.98	S 89° 44' 51" E			
4	734.95	S 63° 29' 56" W			
5	329.99	N 0° 00' 41" E			
6	493.03	N 89° 50' 18" W			
7	330.05	S 0° 00' 19" E			
8	492.94	N 89° 50' 45" W			
T-1	164.86	S 0° 05' 01" W			
T-2	659.44	S 0° 05' 01" W			
T-3	329.72	S 0° 05' 01" W			
T-4	657.25	N 89° 50' 45" W			

CERTIFICATE OF SURVEY ^{4.33} Field Book No. A 2798 Date 6-17-68

I HEREBY CERTIFY THAT THE ABOVE PLAT IS A TRUE AND CORRECT REPRESENTATION OF THE SURVEY MADE IN SECTION 9, T-10-N, R-22-E, HASKELL COUNTY OKLAHOMA.

WHEELER - OAKLEY & ASSOCIATES ENGINEERS
 Under the Supervision of
U.S. ARMY ENGINEER DISTRICT, TULSA
CORPS OF ENGINEERS
 SHEET 5 of 12

- LEGEND
- △ MONUMENT
 - ORIGINAL CORNER
 - IRON PIN
 - HWY R/W MARKER

Floyd H. Oakley
 REGISTERED PROFESSIONAL ENGINEER