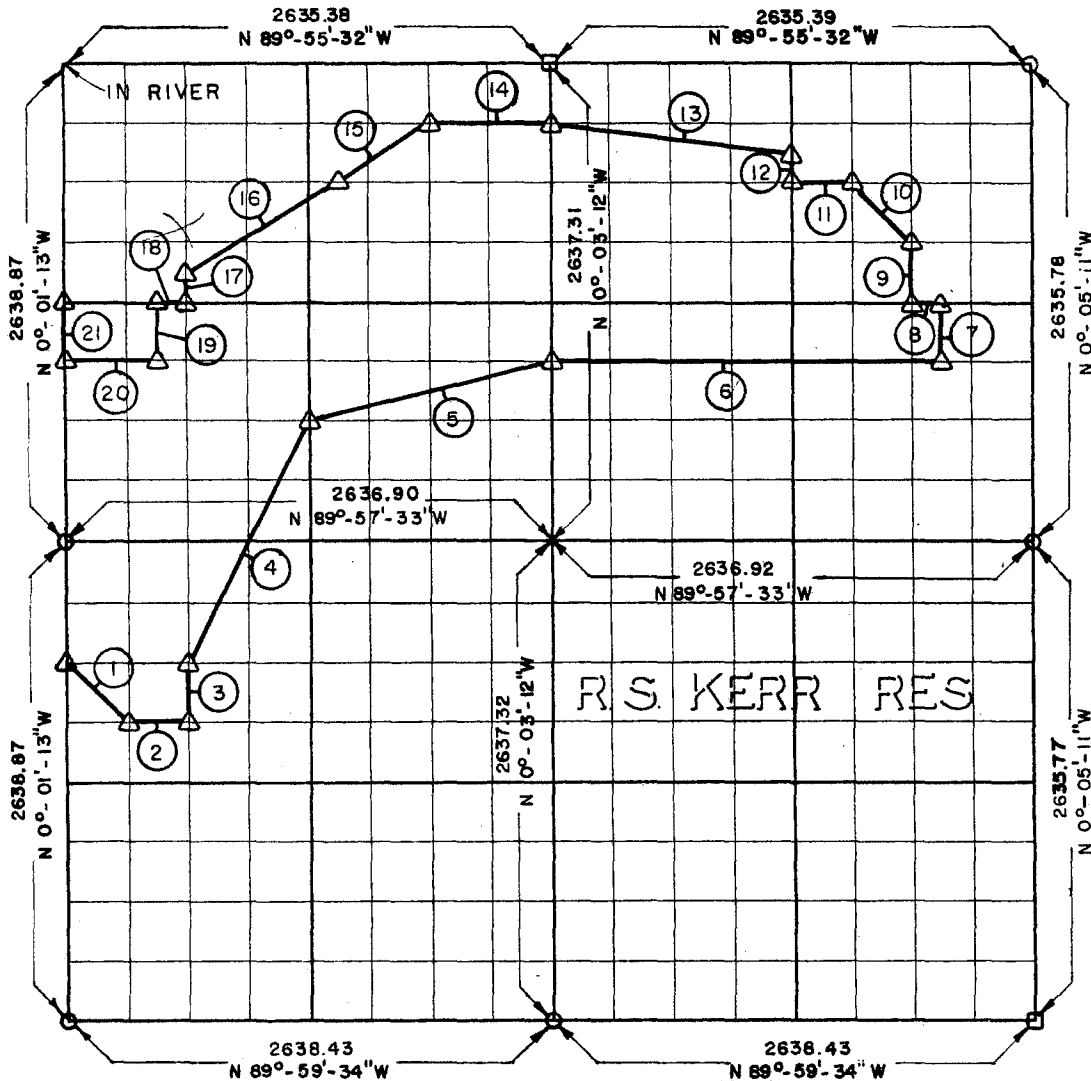


PARTIAL BOUNDARY SURVEYS  
 ROBERT S. KERR LOCK AND DAM 15  
 ARKANSAS RIVER, OKLAHOMA

Performed Under Contract Number DA-34-066-Civeng 66-219

SEC 17 T-10-N R-23-E COUNTY HASKELL



Course No.	Distance	Bearing	Course No.	Distance	Bearing
1	466.56	S-44°58'51\"-E	14	658.87	N-89°55'39\"-W
2	329.68	S-89°58'19\"-E	15	698.49	S-44°59'22\"-W
3	329.81	N-0°01'43\"-W	16	960.12	S-59°03'05\"-W
4	1743.92	N-26°32'06\"-E	17	164.91	S-0°01'41\"-E
5	1358.28	N-76°0'11\"-E	18	164.76	N-89°56'31\"-E
6	2142.03	S-89°56'48\"-E	19	329.82	S-0°01'35\"-E
7	329.51	N-0°04'50\"-W	20	494.31	N-89°56'47\"-W
8	164.76	N-89°56'32\"-W	21	329.86	N-0°01'13\"-W
9	329.52	N-0°04'41\"-W			
10	466.56	N-45°0'07\"-W			
11	329.47	N-89°56'02\"-W			
12	164.76	N-0°04'13\"-W			
13	1359.13	N-75°53'40\"-W			

CERTIFICATE OF SURVEY

Field Book No. A-2423 Date 6-7-66

I HEREBY CERTIFY THAT THE ABOVE PLAT IS A TRUE AND CORRECT REPRESENTATION OF THE SURVEY MADE IN SECTION

HOLWAY ENGINEERS INC.

Under the Supervision of

LEGEND

- ▲ MONUMENT
- ORIGINAL COR