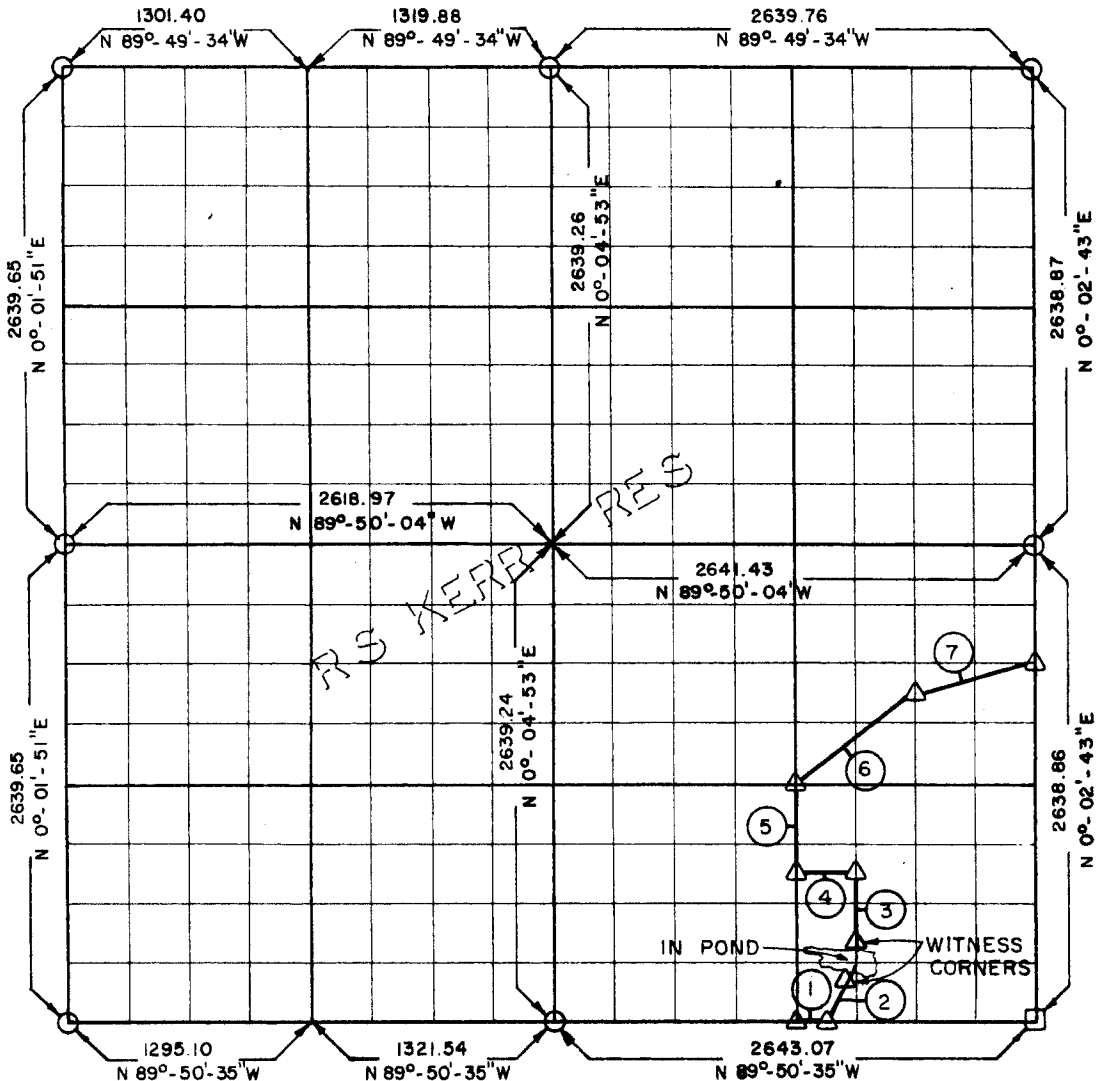


PARTIAL BOUNDARY SURVEYS
 ROBERT S. KERR LOCK AND DAM 15
 ARKANSAS RIVER, OKLAHOMA

Performed Under Contract Number DA-34-066-Civeng 66-219

SEC 19 T-10-N R-23-E COUNTY HASKELL



Course No.	Distance	Bearing	Course No.	Distance	Bearing
1	165.19	N-89° 50' 35" W			
2	368.67	N-26° 40' 44" E			
3	494.81	N-0° 03' 32" E			
4	330.32	S-89° 50' 26" E			
5	494.82	N-0° 03' 48" W			
6	824.59	N-53° 17' 13" E			
7	680.44	N-76° 08' 07" E			
3,358.84					

CERTIFICATE OF SURVEY

Field Book No. A-2418 Date 6-7-66

I HEREBY CERTIFY THAT THE ABOVE PLAT IS A TRUE AND CORRECT REPRESENTATION OF THE SURVEY MADE IN SECTION

HOLWAY ENGINEERS INC.

Under the Supervision of

LEGEND

Δ MONUMENT
 □ BRIMMS E.P.M.