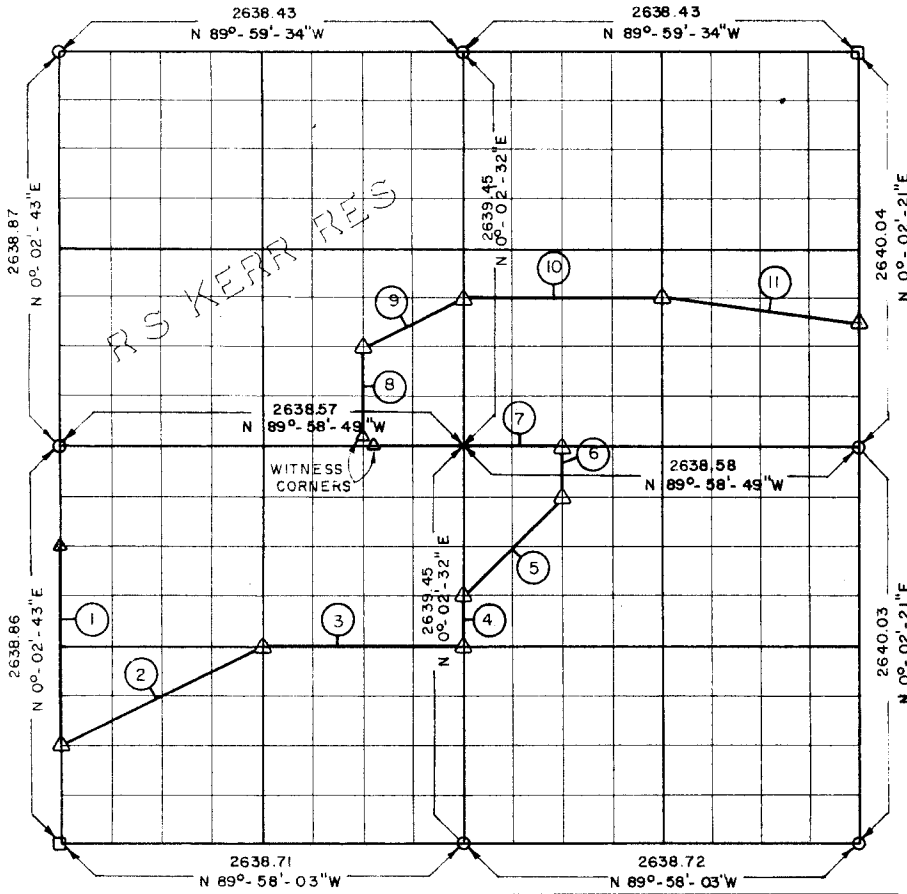


PARTIAL BOUNDARY SURVEYS
 ROBERT S. KERR LOCK AND DAM 15
 ARKANSAS RIVER, OKLAHOMA

Performed Under Contract Number DA-34-066-Civeng 66-219

SEC 20 T-10-N R-23-E COUNTY HASKELL



| Course No. | Distance | Bearing | Course No. | Distance | Bearing |
|------------|----------|-----------------|------------|----------|---------|
| 1 | 1319.43 | S-0° 02' 43" W | | | |
| 2 | 1475.27 | N-63° 27' 47" E | | | |
| 3 | 1319.32 | S-89° 58' 26" E | | | |
| 4 | 329.93 | N-0° 02' 32" E | | | |
| 5 | 933.72 | N-45° 00' 31" E | | | |
| 6 | 329.95 | N-0° 02' 30" E | | | |
| 7 | 1319.29 | N-89° 58' 49" W | | | |
| 8 | 659.83 | N-0° 02' 35" E | | | |
| 9 | 737.68 | N-63° 26' 55" E | | | |
| 10 | 1319.26 | S-89° 59' 05" E | | | |
| 11 | 1329.47 | S-82° 51' 19" E | | | |

CERTIFICATE OF SURVEY

Field Book No. A-2419 Date 6-7-66

I HEREBY CERTIFY THAT THE ABOVE PLAT IS A TRUE AND CORRECT REPRESENTATION OF THE SURVEY MADE IN SECTION 20, T-10-N, R-23-E, HASKELL COUNTY, OKLAHOMA

HOLWAY ENGINEERS INC.

Under the Supervision of
 U.S. ARMY ENGINEER DISTRICT, TULSA
 CORPS OF ENGINEERS

LEGEND

- △ MONUMENT
- ORIGINAL CORNER
- IRON PIN

David Wood
 REGISTERED PROFESSIONAL ENGINEER