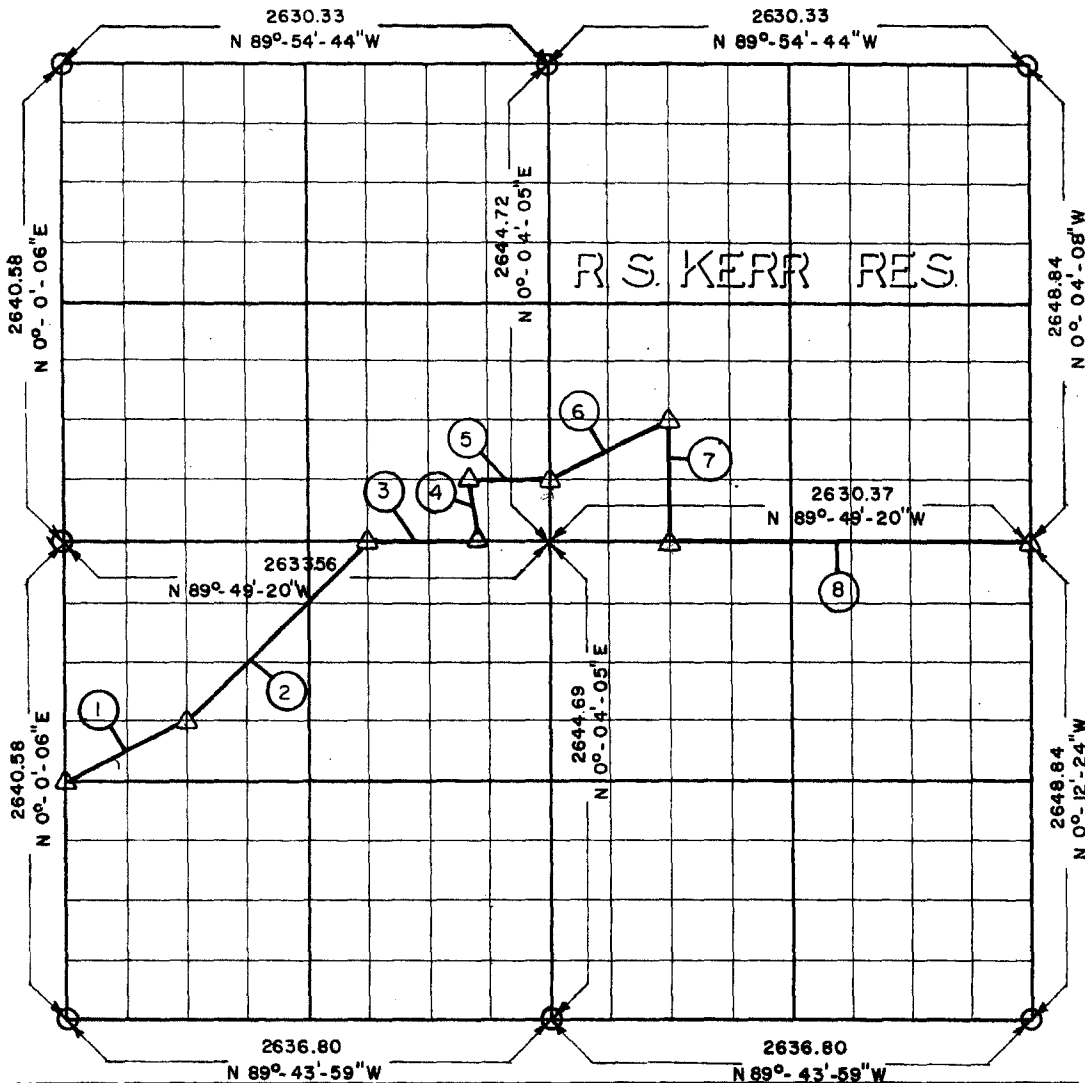


PARTIAL BOUNDARY SURVEYS  
 ROBERT S. KERR LOCK AND DAM 15  
 ARKANSAS RIVER, OKLAHOMA

Performed Under Contract Number DA-34-066-Civeng 66-219

SEC 22 T-10-N R-23-E COUNTY HASKELL



Course No.	Distance	Bearing	Course No.	Distance	Bearing
1	735.69	N-63°33'14"-E			
2	1396.43	N-44°59'36"-E			
3	607.63	S-89°49'20"-E			
4	334.01	N-8°08'22"-W			
5	426.85	S-89°50'02"-E			
6	734.86	N-63°25'12"-E			
7	661.44	S-0°04'06"-E			
8	1972.78	S-89°49'20"-E			
	6,869.69				

Field Book No. A-2421

Date 6-7-66

CERTIFICATE OF SURVEY

I HEREBY CERTIFY THAT THE ABOVE PLAT IS A TRUE AND CORRECT REPRESENTATION OF THE SURVEY MADE IN SECTION 22 T-10-N R-23-E HASKELL COUNTY OKLAHOMA



HOLWAY ENGINEERS INC.

Under the Supervision of

LEGEND

Δ MONUMENT  
 □ ORIGINAL CORNER