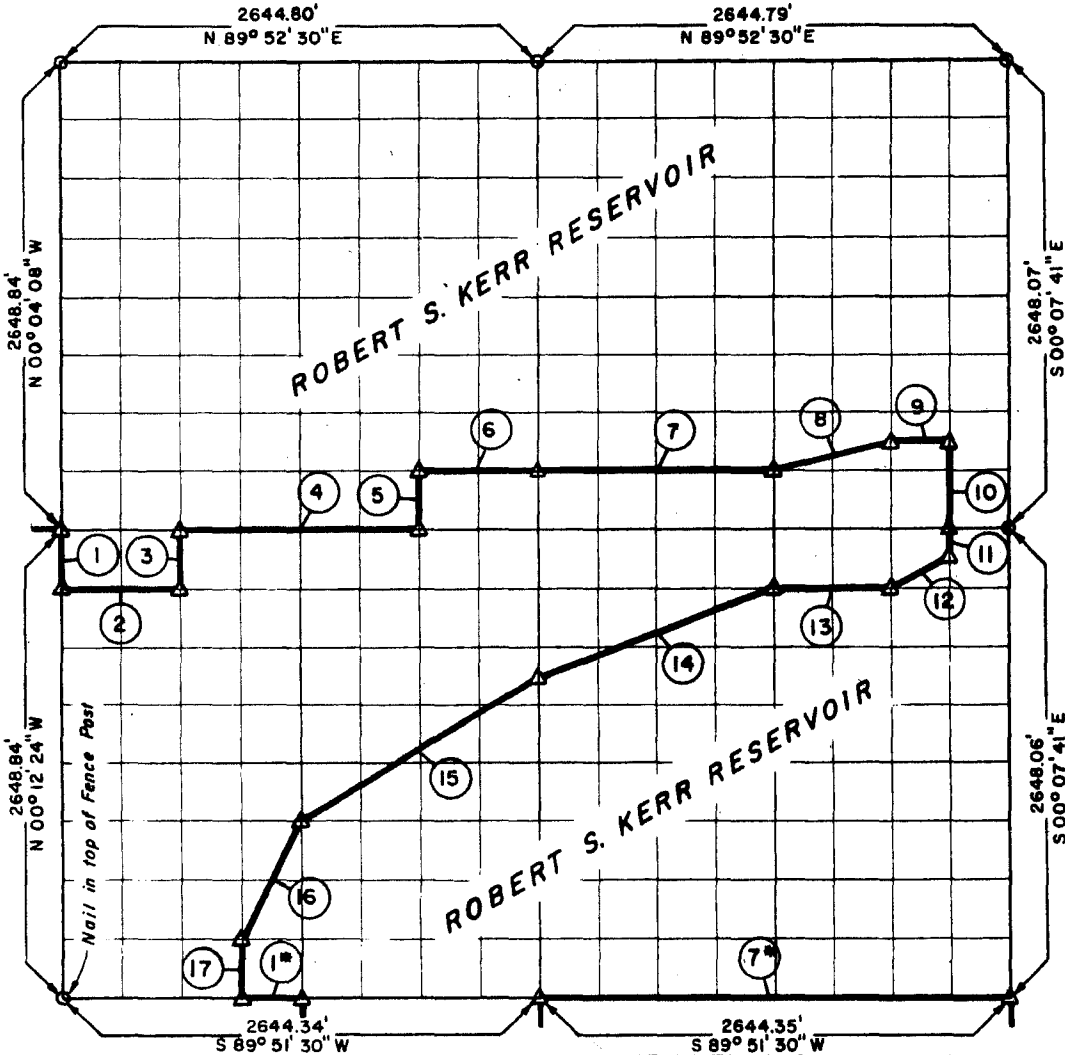


**PARTIAL BOUNDARY SURVEYS
ROBERT S. KERR LOCK & DAM 15
ARKANSAS RIVER, OKLAHOMA**

Performed Under Contract Number DA-34-066-Civeng-66-225

SEC. 23 T-10-N R-23-E COUNTY HASKELL



Course No.	Distance	Bearing	Course No.	Distance	Bearing
1	331.10	S 00° 12' 24" E	14	1412.46	S 69° 16' 55" W
2	661.83	N 89° 51' 58" E	15	1560.46	S 57° 49' 49" W
3	331.09	N 00° 11' 18" W	16	739.95	S 26° 22' 03" W
4	1323.88	N 89° 52' 00" E	17	331.09	S 00° 10' 45" E
5	331.08	N 00° 07' 01" W	1*	330.54	N 89° 51' 30" E
6	661.85	N 89° 52' 04" E	7*	2644.35	N 89° 51' 30" E
7	1322.30	N 89° 52' 04" E			
8	681.56	N 75° 48' 50" E			
9	330.58	N 89° 52' 06" E			
10	496.52	S 00° 07' 43" E			
11	165.50	S 00° 07' 43" E			
12	369.70	S 63° 16' 15" W			
13	661.13	S 89° 51' 55" W			

Field Book No. A-2395, Date 2-22-66

CERTIFICATE OF SURVEY

I HEREBY CERTIFY THAT THE ABOVE PLAT IS A TRUE AND CORRECT REPRESENTATION OF THE SURVEY MADE IN SECTION 23, T-10-N, R-23-E, HASKELL COUNTY, OKLAHOMA

K. N. COX & ASSOCIATES - ENGINEERS

Under the Supervision of

**U.S. ARMY ENGINEER DISTRICT, TULSA
CORPS OF ENGINEERS**

LEGEND

- △ MONUMENT
- ORIGINAL CORNER
- IRON PIN

K. N. Cox
REGISTERED PROFESSIONAL ENGINEER