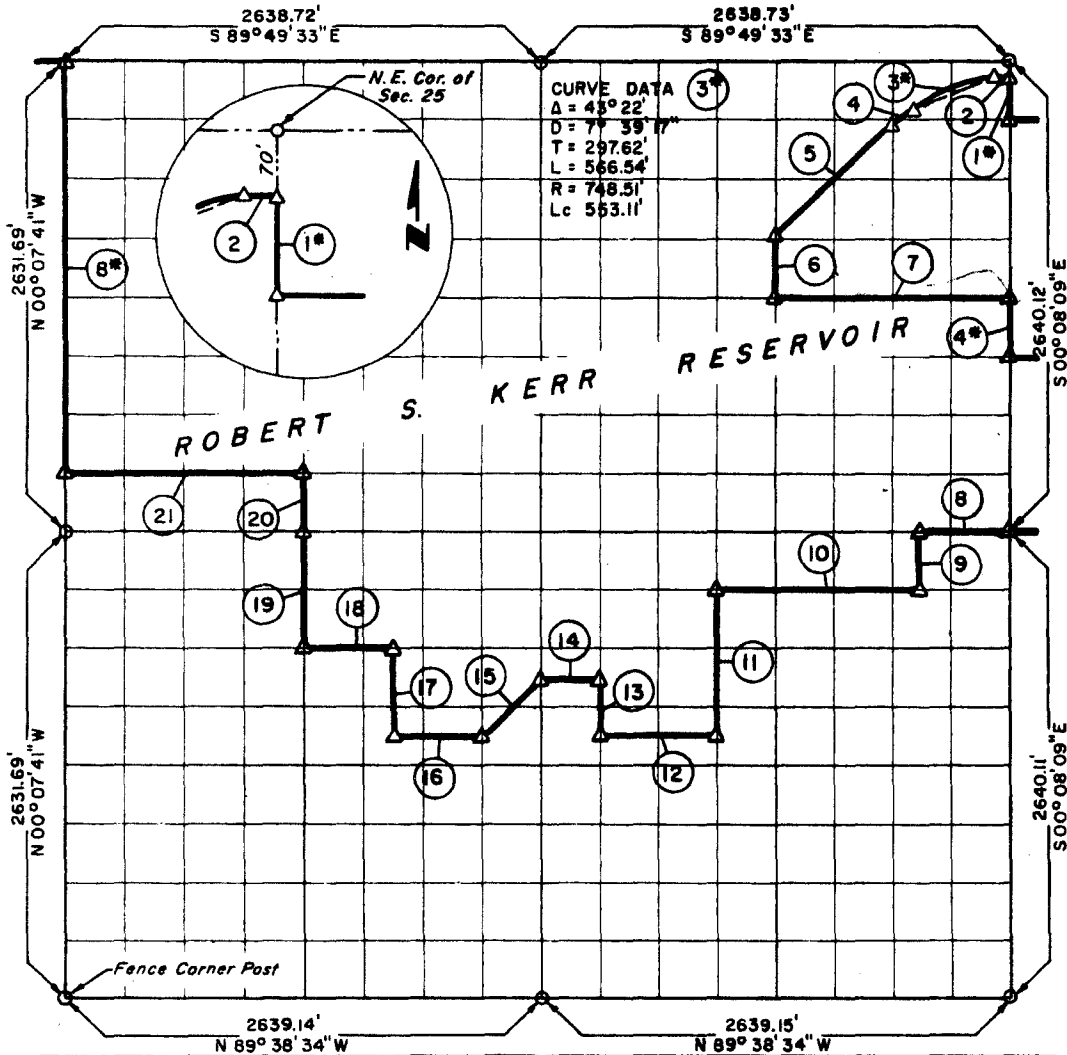


**PARTIAL BOI DARY SURVEYS
ROBERT S. KERR LOCK & DAM 15
ARKANSAS RIVER, OKLAHOMA**

Performed Under Contract Number DA-34-066-Civeng-66-225

SEC. 25 T-10-N R-23-E COUNTY HASKELL



Course No.	Distance	Bearing	Course No.	Distance	Bearing
1*	260.02	N 00° 08' 09" W	13	329.55	N 00° 07' 57" W
2	87.24	N 89° 49' 33" W	14	329.88	N 89° 42' 23" W
3**	553.11	S 68° 36' 50" W	15	464.45	S 45° 07' 17" W
4	168.74	S 53° 44' 12" W	16	494.82	N 89° 41' 39" W
5	792.65	S 46° 55' 50" W	17	493.99	N 00° 07' 52" W
6	402.49	S 00° 08' 02" E	18	494.81	N 89° 42' 41" W
7	1319.42	S 89° 46' 47" E	19	658.46	N 00° 07' 49" W
4*1	330.02	S 00° 08' 09" E	20	329.22	N 00° 07' 49" W
8	494.80	N 89° 44' 03" W	21	1319.45	N 89° 44' 48" W
9	329.92	S 00° 08' 06" E	8**	2302.73	N 00° 07' 41" W
10	1154.55	N 89° 43' 22" W	*1 See Plat for Sec. 30, T-10-N, R-24-E		
11	824.22	S 00° 08' 01" E	** Course (3) is the long chord of curve. See Curve Data above.		
12	659.76	N 89° 41' 39" W	** See Plat for Sec. 26, T-10-N, R-23-E Date 2-22-66		

CERTIFICATE OF SURVEY

I HEREBY CERTIFY THAT THE ABOVE PLAT IS A TRUE AND CORRECT REPRESENTATION OF THE SURVEY MADE IN SECTION 25, T-10-N, R-23-E, HASKELL COUNTY, OKLAHOMA

25 T-10-N, R-23-E, HASKELL COUNTY, OKLAHOMA

K. N. Cox
REGISTERED PROFESSIONAL ENGINEER

K. N. COX & ASSOCIATES - ENGINEERS

Under the Supervision of

**U.S. ARMY ENGINEER DISTRICT, TULSA
CORPS OF ENGINEERS**

SHEET 1 of 1

LEGEND

- Δ MONUMENT
- ORIGINAL CORNER
- IRON PIN