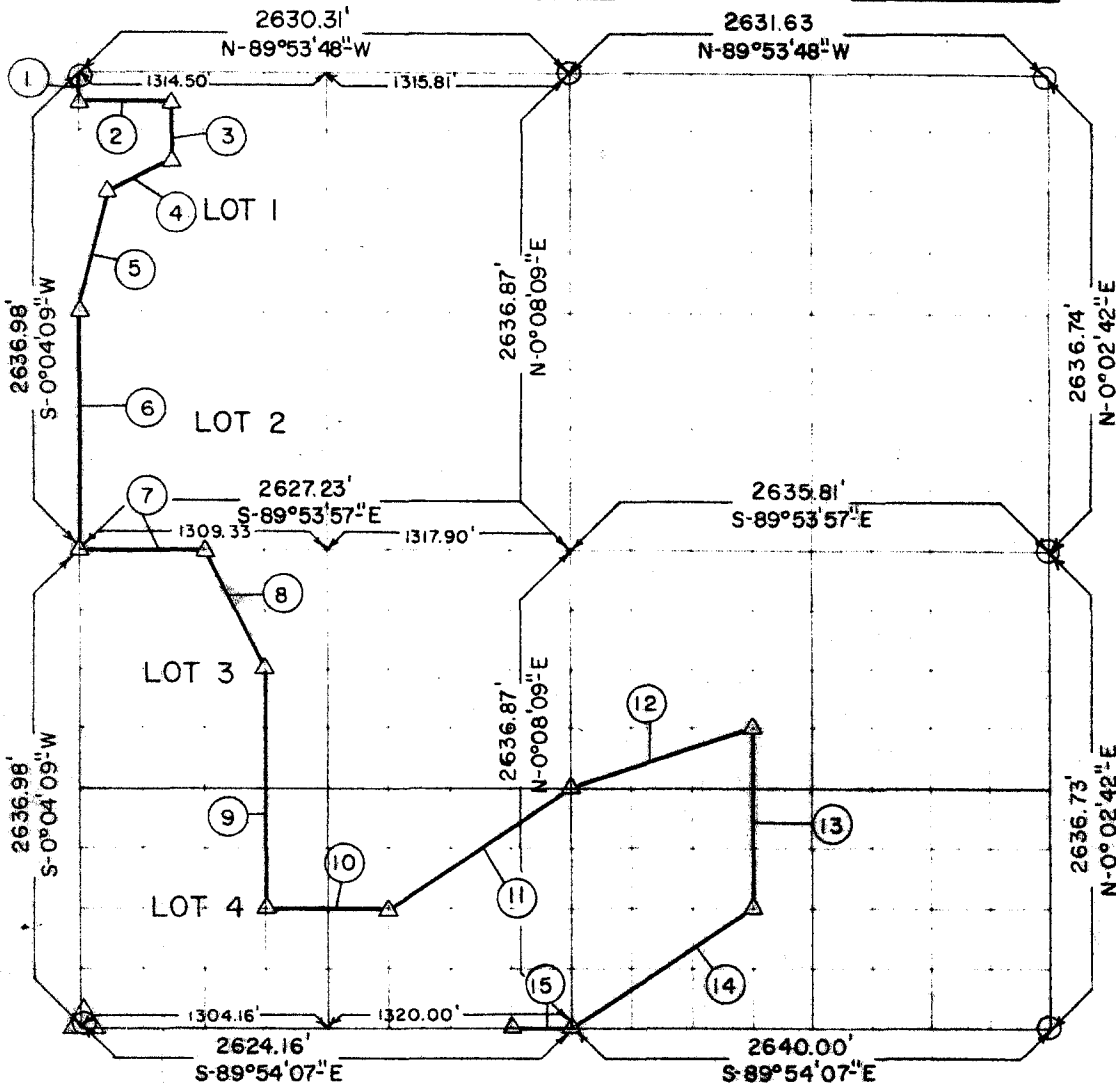


**PARTIAL BOUNDARY SURVEYS**  
**ROBERT S. KERR LOCK AND DAM 15**  
**ARKANSAS RIVER, OKLAHOMA**

630

Performed Under Contract Number DA-34-066-Civeng 66-214

SEC 31 T-10-N R-23-E COUNTY HASKELL



Course No	Distance	Bearing	Course No	Distance	Bearing
1	165.00	S-0°04'09\"W	14	1189.43	S-56°26'28\"W
2	489.18	S-89°53'48\"E	15	330.00	N-89°54'07\"W
3	330.00	S-0°04'09\"W			
4	364.09	S-63°17'16\"W			
5	679.28	S-14°03'07\"W			
6	1318.49	S-0°04'09\"W			
7	650.38	S-89°53'57\"E			
8	736.52	S-26°22'50\"E			
9	1318.47	S-0°11'34\"W			
10	659.74	S-89°54'05\"E			
11	1189.43	N-56°26'25\"E			
12	1042.71	N-71°40'18\"E			
13	988.81	S-0°06'07\"W			

11,451.53 ✓

CERTIFICATE OF SURVEY Plat Book No. A-2413 Date 3-31-66

HEREBY CERTIFY THAT THE ABOVE PLAT IS A TRUE AND CORRECT REPRESENTATION OF THE SURVEY MADE IN SECTION 31, T-10-N, R-23-E, Haskell COUNTY, OKLAHOMA

*[Signature]*  
REGISTERED PROFESSIONAL ENGINEER

**BREISCH ENGINEERING COMPANY**  
Under the Supervision of  
**U.S. ARMY ENGINEER DISTRICT, TULSA**  
**CORPS OF ENGINEERS**

**LEGEND**  
Δ MONUMENT  
□ ORIGINAL CORNER  
○ IRON PIN  
▲ G.L.O. PIPE & CAP