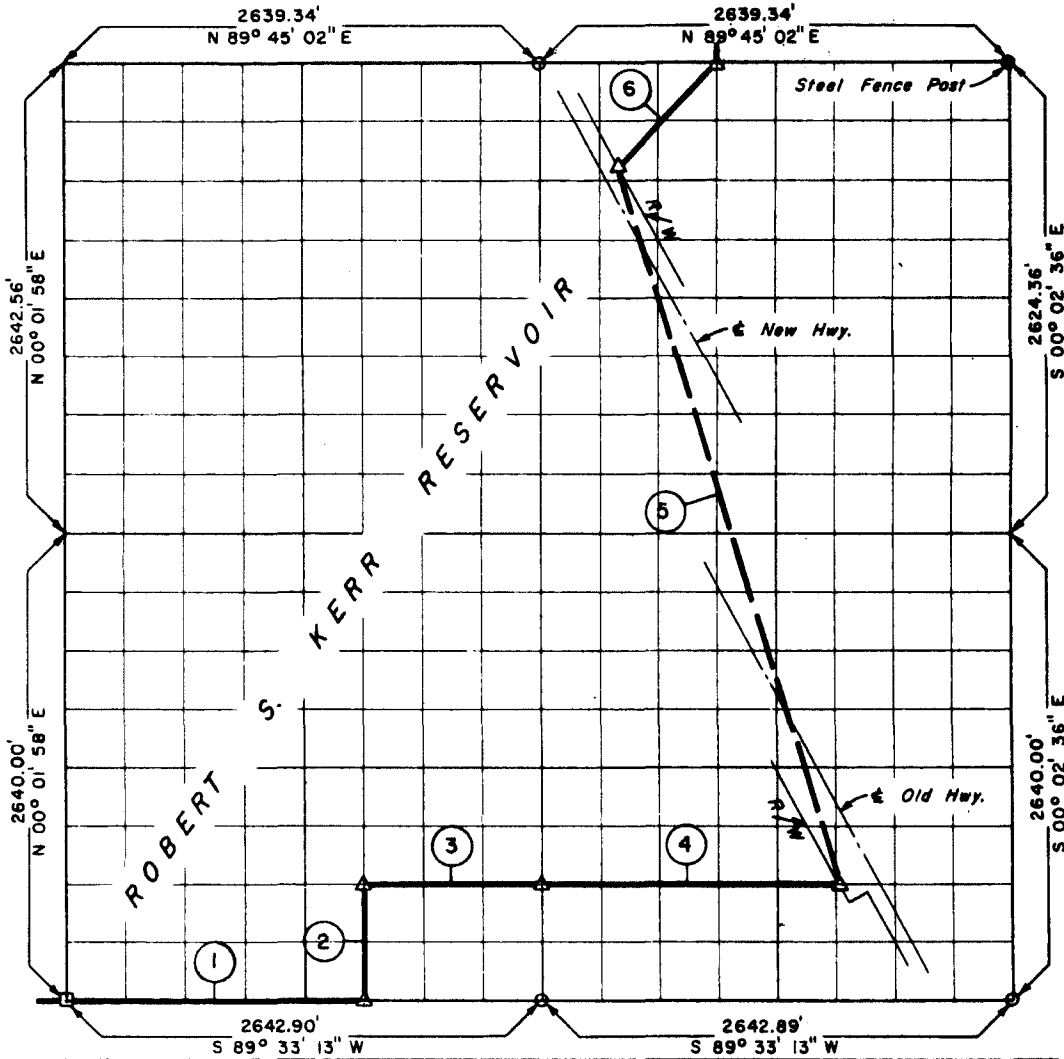


**PARTIAL BOUNDARY SURVEYS
ROBERT S. KERR DAM & DAM 15
ARKANSAS RIVER, OKLAHOMA**

Performed Under Contract Number DA-34-066-Civeng-66-225

SEC. 16 T-10-N R-24-E COUNTY LE FLORE



Course No.	Distance	Bearing	Course No.	Distance	Bearing
1	1651.81	N 89° 33' 13" E			
2	660.00	N 00° 00' 32" E			
3	990.92	N 89° 33' 13" E			
4	1678.45	N 89° 33' 13" E			
5*	4226.63	N 17° 18' 28" W			
6	804.57	N 44° 56' 46" E			
* Course 5 is a Computed Tie					

Field Book No. A-2401-B, Date 3-28-66

CERTIFICATE OF SURVEY

I HEREBY CERTIFY THAT THE ABOVE PLAT IS A TRUE AND CORRECT REPRESENTATION OF THE SURVEY MADE IN SECTION 16, T-10-N, R-24-E, LE FLORE COUNTY, OKLAHOMA

K.N. Cox
REGISTERED PROFESSIONAL ENGINEER

K.N. COX & ASSOCIATES - ENGINEERS

Under the Supervision of

**U.S. ARMY ENGINEER DISTRICT, TULSA
CORPS OF ENGINEERS**

SHEET 1 of 1

LEGEND

- △ MONUMENT
- ORIGINAL CORNER
- IRON PIN