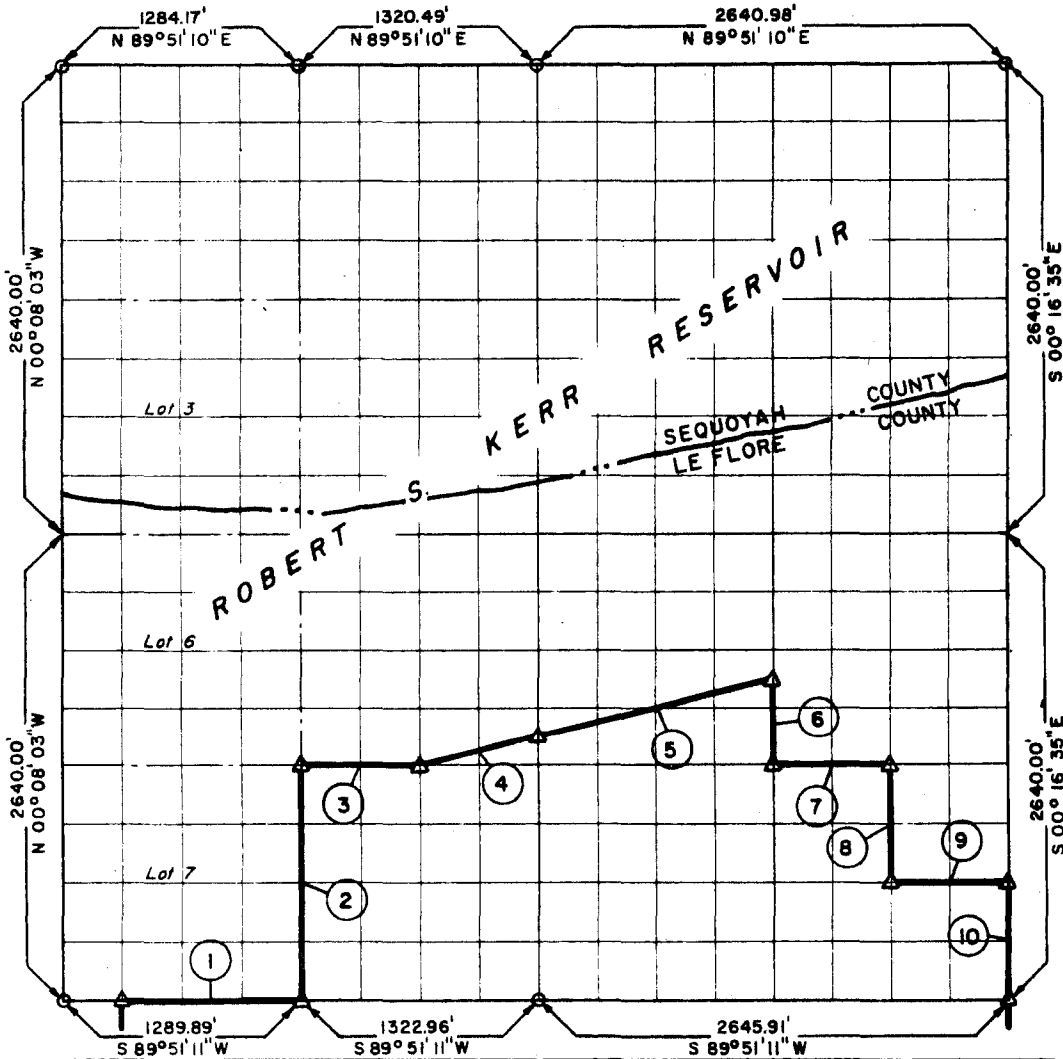


PARTIAL BOUNDARY SURVEYS
ROBERT S. KERR LOCK & DAM 15
ARKANSAS RIVER, OKLAHOMA

Performed Under Contract Number DA-34-066-Civeng-66-225

SEC. 19 T-10-N R-24-E COUNTY LE FLORE



Course No.	Distance	Bearing	Course No.	Distance	Bearing
1	967.42	N 89° 51' 11" E			
2	1320.00	N 00° 11' 45" W			
3	661.17	N 89° 51' 11" E			
4	681.15	N 75° 50' 04" E			
5	1362.31	N 75° 50' 04" E			
6	495.00	S 00° 14' 58" E			
7	661.17	N 89° 51' 11" E			
8	660.00	S 00° 15' 46" E			
9	661.34	N 89° 51' 11" E			
10	660.00	S 00° 16' 35" E			
		8,129.56 ✓			

Field Book No. A-2398, Date 2-18-66

CERTIFICATE OF SURVEY

I HEREBY CERTIFY THAT THE ABOVE PLAT IS A TRUE AND CORRECT REPRESENTATION OF THE SURVEY MADE IN SECTION 19, T-10-N, R-24-E, LE FLORE COUNTY, OKLAHOMA

K. N. Cox
 REGISTERED PROFESSIONAL ENGINEER

K. N. COX & ASSOCIATES - ENGINEERS

Under the Supervision of

**U.S. ARMY ENGINEER DISTRICT, TULSA
 CORPS OF ENGINEERS**

SHEET 1 of 1

LEGEND

- ▲ MONUMENT
- ORIGINAL CORNER
- IRON PIN