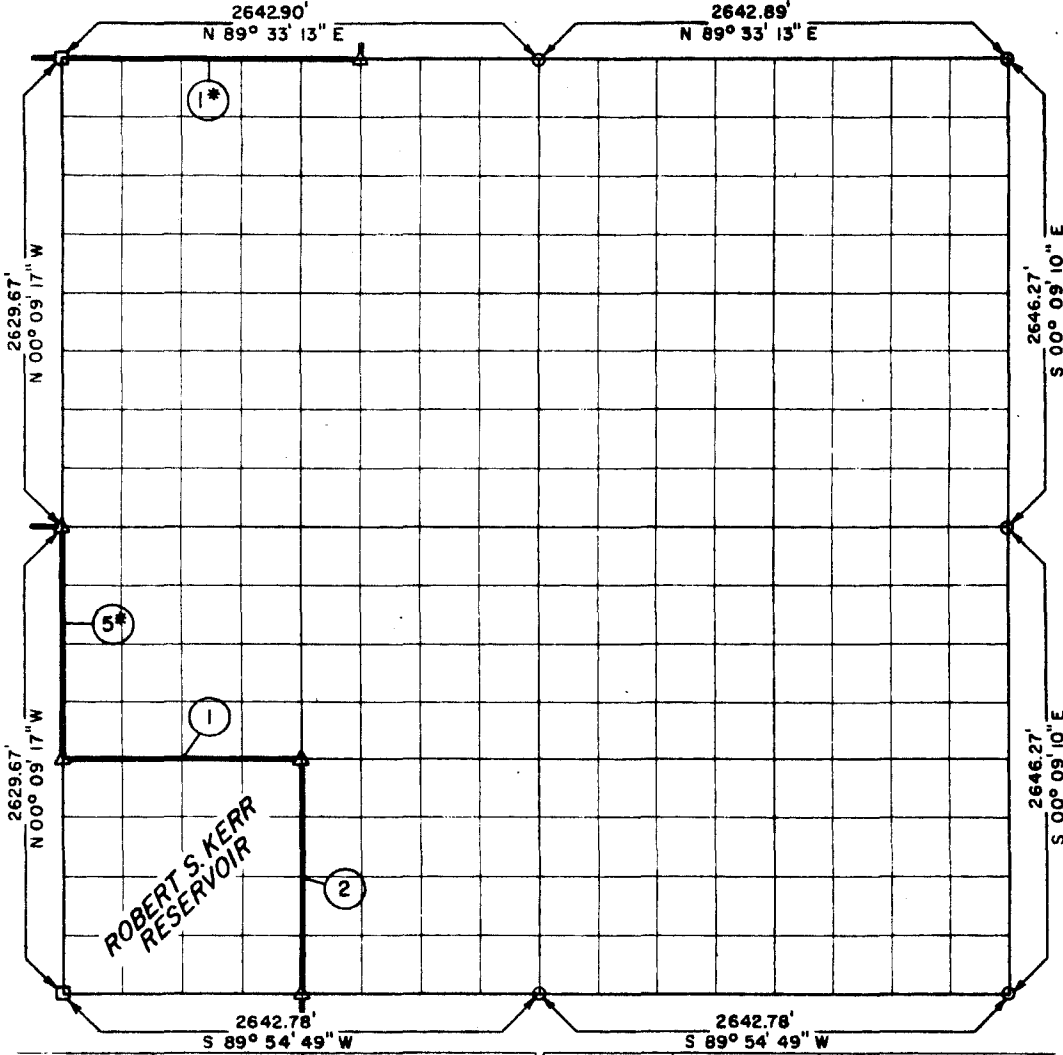


**PARTIAL BOUNDARY SURVEYS
ROBERT S. KERR LOCK & DAM 15
ARKANSAS RIVER, OKLAHOMA**

Performed Under Contract Number DA-34-066-Civeng-66-225

SEC. 21 T-10-N R-24-E COUNTY LE FLORE



Course No.	Distance	Bearing	Course No.	Distance	Bearing
5*1	1314.84	S 00° 09' 17" E			
1	1321.40	N 89° 49' 25" E			
2	1316.91	S 00° 09' 15" E			
1*2	1651.81	N 89° 33' 13" E			
#1	See Plat for	Sec. 20, T-10-N, R-24-E			
#2	See Plat for	Sec. 16, T-10-N, R-24-E			

Field Book No. A-2401-C , Date 3-21-66

CERTIFICATE OF SURVEY

I HEREBY CERTIFY THAT THE ABOVE PLAT IS A TRUE AND CORRECT REPRESENTATION OF THE SURVEY MADE IN SECTION 21, T-10-N, R-24-E, LE FLORE COUNTY, OKLAHOMA

K.N. COX & ASSOCIATES - ENGINEERS

Under the Supervision of

**U.S. ARMY ENGINEER DISTRICT, TULSA
CORPS OF ENGINEERS**

LEGEND

- △ MONUMENT
- ORIGINAL CORNER
- IRON PIN

SHEET 1 of 1

K.N. Cox
REGISTERED PROFESSIONAL ENGINEER