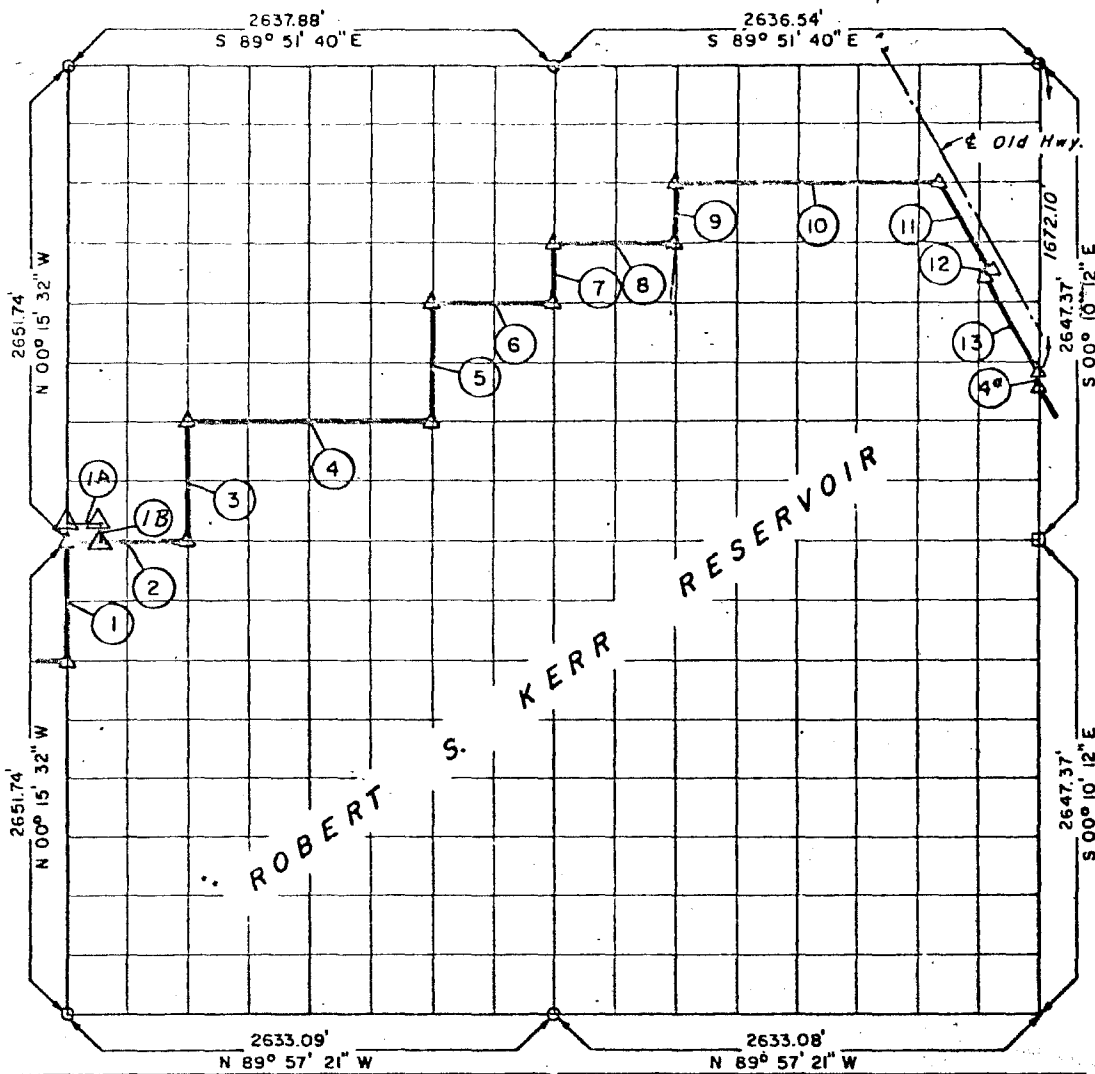


PARTIAL BOUNDARY SURVEYS  
 ROBERT S. KERR DAM & DAM 15  
 ARKANSAS RIVER, OKLAHOMA

Performed Under Contract Number DA-34-066-Civeng-66-225

SEC. 8 T-10-N R-24-E COUNTY SEQUOYAH



Course No.	Distance	Bearing	Course No.	Distance	Bearing
* 1	662.94	N 00° 15' 32" W			
2	658.87	S 89° 54' 31" E			
3	662.80	N 00° 14' 46" W	(4*)	See Sec. 9, T-10-N, R-24-E	
4	1318.04	S 89° 53' 48" E			
5	662.52	N 00° 13' 13" W			
6	659.17	S 89° 53' 06" E	* 1A	200.00	S 89° 54' 25" E
7	331.19	N 00° 12' 26" W	1B	100.00	S 00° 15' 18" E
8	658.97	S 89° 52' 44" E			
9	331.12	N 00° 11' 52" W			
10	1449.70	S 89° 52' 23" E			
11	515.20	S 28° 40' 32" E			
12	20.00	S 61° 19' 28" W			
13	626.68	S 28° 40' 32" E		8,557.20 ✓	

Field Book No. A-2393, Date 3-28-66 Revised Jan. 1985

CERTIFICATE OF SURVEY

HEREBY CERTIFY THAT THE ABOVE PLAT IS A TRUE AND CORRECT REPRESENTATION OF THE SURVEY MADE IN SECTION 8, T-10-N, R-24-E, SEQUOYAH COUNTY, OKLAHOMA

*R. N. Cox*  
 REGISTERED PROFESSIONAL ENGINEER

K.N. COX & ASSOCIATES - ENGINEERS

Under the Supervision of

U.S. ARMY ENGINEER DISTRICT, TULSA  
 CORPS OF ENGINEERS

SHEET 1 of 1

LEGEND

- ▲ MONUMENT
- ORIGINAL CORNER
- IRON PIN