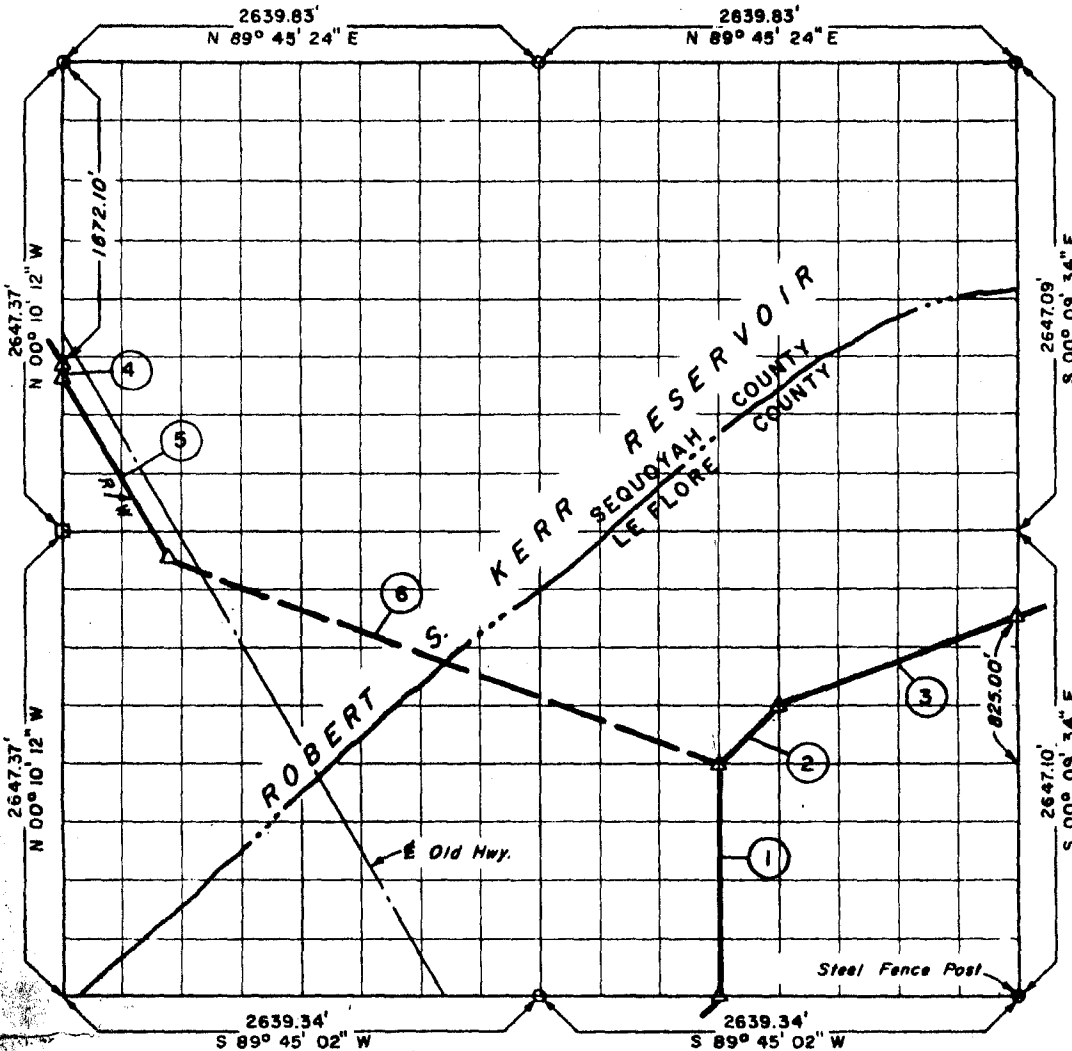


PARTIAL BOUNDARY SURVEY  
 ROBERT S. KERR LOCK & DAM 15  
 ARKANSAS RIVER, OKLAHOMA

Performed Under Contract Number DA-34-066-Civeng-66-225

SEC. 9 T-10-N R-24-E COUNTY SEQUOYAH



Course No.	Distance	Bearing	Course No.	Distance	Bearing
4	62.86	S 00° 10' 12" E			
5	1285.87	S 28° 40' 32" E			
6*	3213.90	S 70° 07' 56" E			
See Sheet 1 of 2 for Courses No. 1, 2, 8, 3					
* Course 6 is a Computed Tie					

Field Book No. A-2394, Date 3-25-66

CERTIFICATE OF SURVEY

I HEREBY CERTIFY THAT THE ABOVE PLAT IS A TRUE AND CORRECT REPRESENTATION OF THE SURVEY MADE IN SECTION 9, T-10-N, R-24-E, SEQUOYAH COUNTY, OKLAHOMA.

*K.N. Cox*  
 REGISTERED PROFESSIONAL ENGINEER

K. N. COX & ASSOCIATES - ENGINEERS

Under the Supervision of

U.S. ARMY ENGINEER DISTRICT, TULSA  
 CORPS OF ENGINEERS

SHEET 2 of 2

LEGEND

- △ MONUMENT
- ORIGINAL CORNER
- IRON PIN