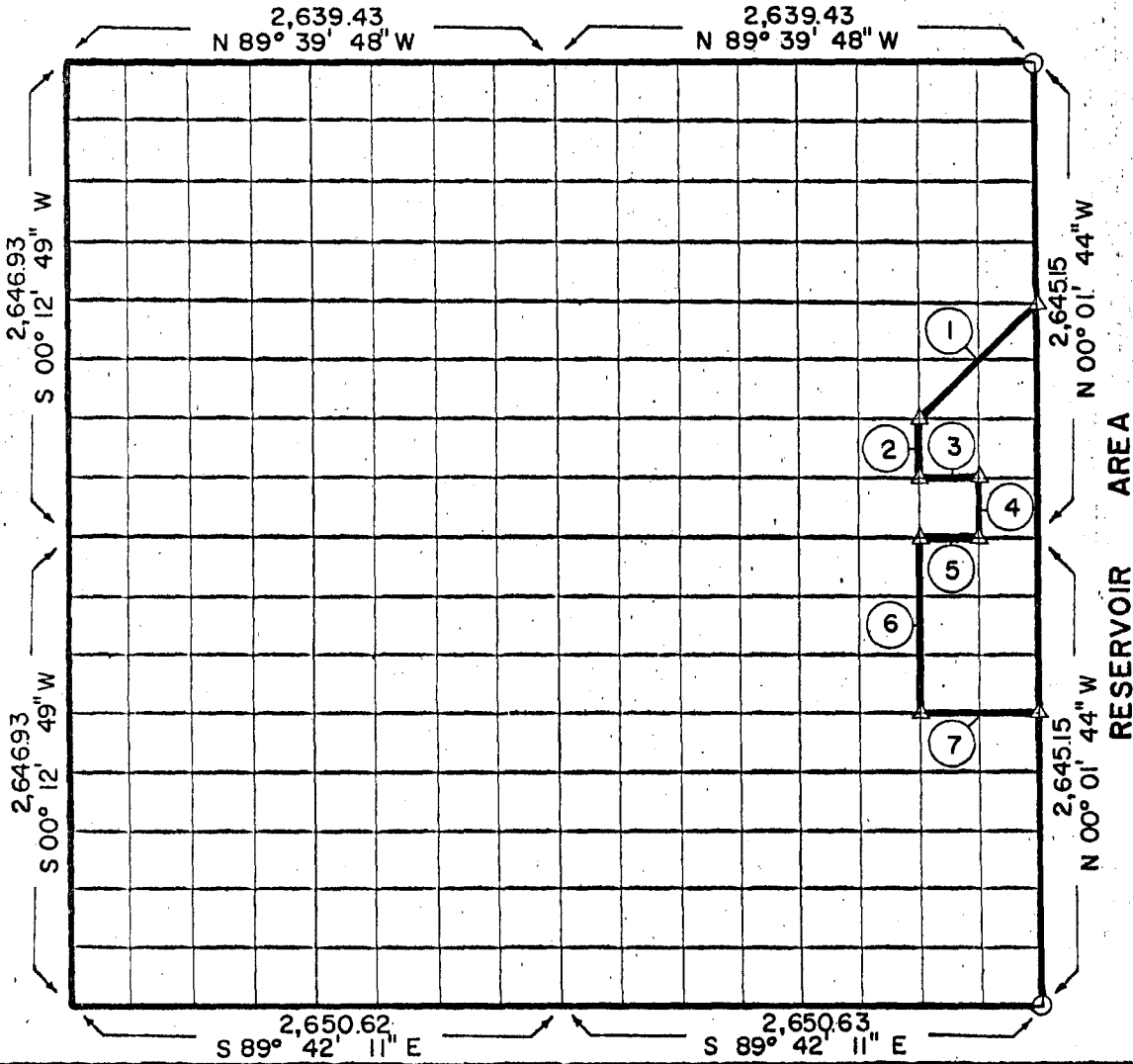


**PARTIAL BOUNDARY SURVEYS
ROBERT S. KERR LOCK & DAM IS
ARKANSAS RIVER, OKLAHOMA**

Performed Under Contract Number DACW 56-68-C-0243

SEC 1 T- 11 -N R- 20 -E COUNTY SEQUOYAH



Course No.	Distance	Bearing	Course No.	Distance	Bearing
1.	932.07	S45°07'47"W			
2.	330.67	S00°00'05"W			
3.	330.54	S89°40'51"E			
4.	330.66	S00°00'49"E			
5.	330.63	N89°41'00"W			
6.	992.01	S00°00'05"W			
7.	661.78	S89°41'26"E			

Book No. A 2880

Date: November 12, 1968

- △ Monument
- Original Corner
- Iron Pin

I, Jack R. Kalman, a Registered Professional Engineer, do hereby certify that the above plot is a true and accurate survey of Section 1, T-11-N, R-20-Es made under my supervision.


JACK R. KALMAN
 Reg. Prof. Engr. No. 2786