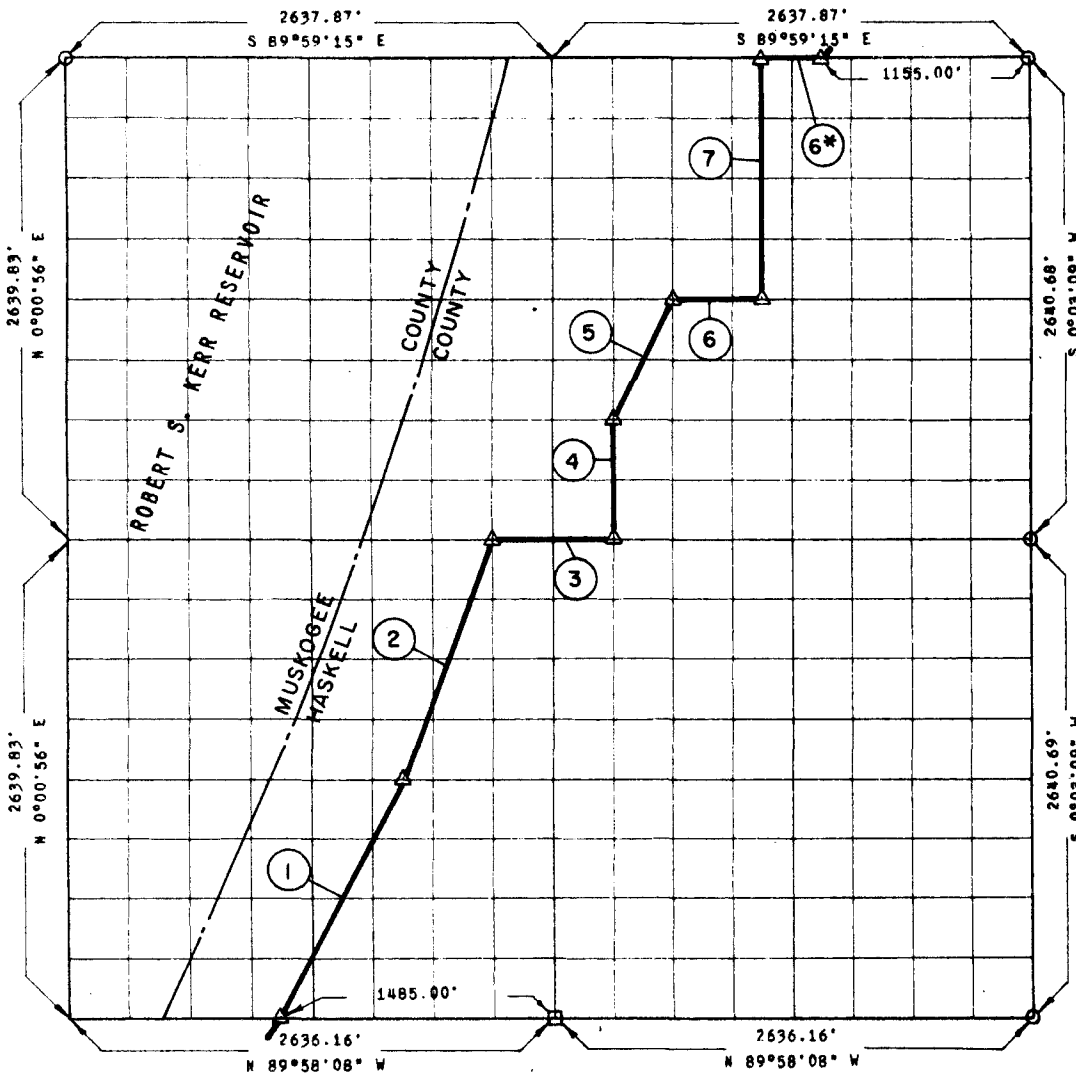


**PARTIAL BOUNDARY SURVEYS**  
**ROBERT S. KERR LOCK & DAM 15**  
**ARKANSAS RIVER, OKLAHOMA**

Performed Under Contract Number DACW 56-68-C-0103

**SEC. 28 T 11 N R 21 E COUNTY MUSKOGEE & HASKELL**



Course No.	Distance	Bearing	Course No.	Distance	Bearing
1	1475.89	N 26°35'50" E	6*	See Plat for Sec. 21, T 11 N, R 21 E	
2	1410.07	N 20°36'06" E			
3	659.25	S 89°58'41" E			
4	660.06	N 00°02'11" E			
5	737.93	N 26°34'23" E			
6	494.52	S 89°58'58" E			
7	1320.22	N 00°02'32" E			
6,757.94 ✓					

Field Book No. A-2785, Date 6-12-68

**CERTIFICATE OF SURVEY**

I HEREBY CERTIFY THAT THE ABOVE PLAT IS A TRUE AND CORRECT REPRESENTATION OF THE SURVEY MADE IN SECTION

28, T 11 N, R 21 E, MUSKOGEE & HASKELL COUNTIES, OKLAHOMA

**K. N. COX & ASSOCIATES - ENGINEERS**

Under the Supervision of

**U.S. ARMY ENGINEER DISTRICT, TULSA**  
**CORPS OF ENGINEERS**

**LEGEND**

- △ MONUMENT
- ORIGINAL CORNER
- IRON PIN

*K. N. Cox*