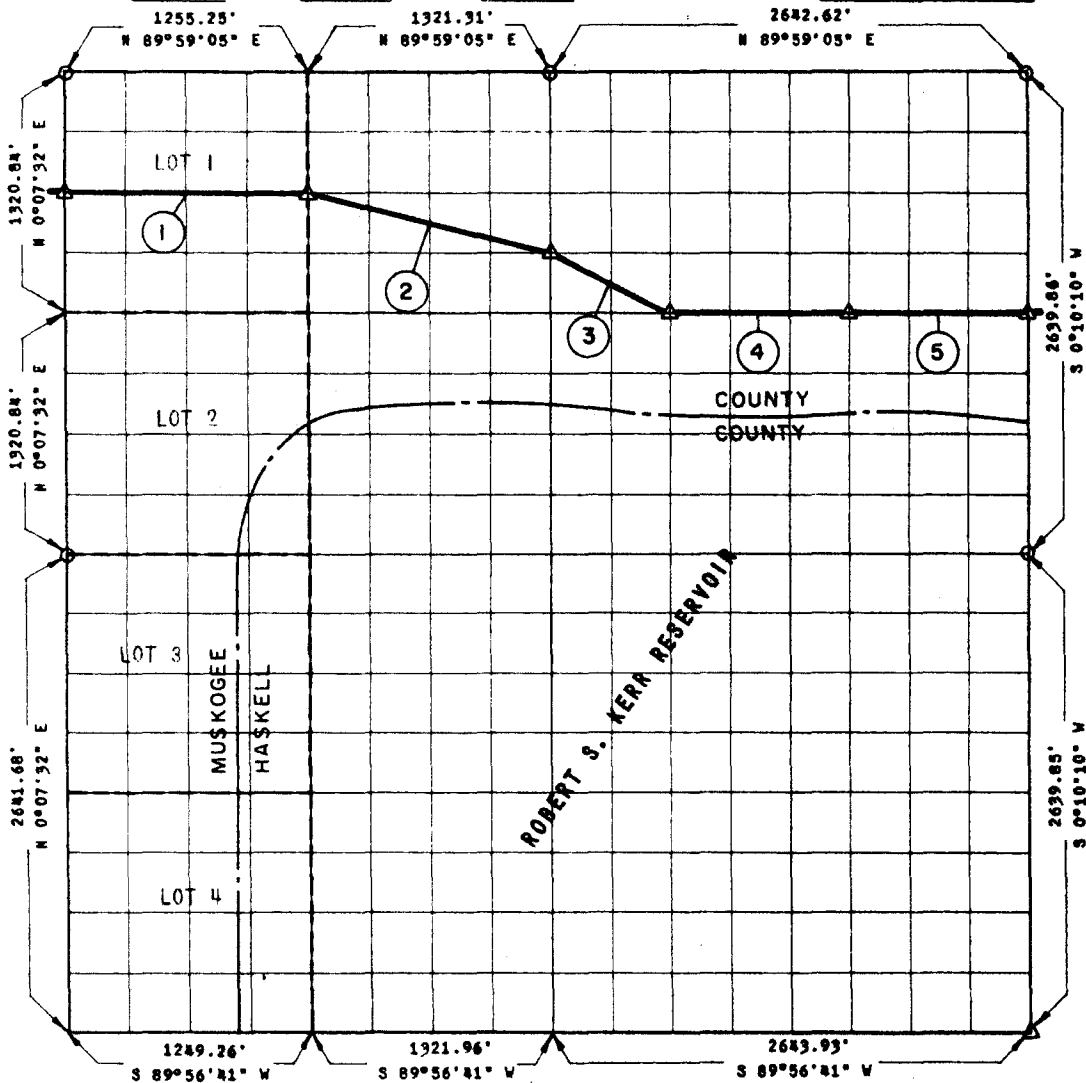


**PARTIAL BOUNDARY SURVEYS
ROBERT S. KERR LOCK & DAM 15
ARKANSAS RIVER, OKLAHOMA**

Performed Under Contract Number DACW 56-68-C-0103

SEC. 31 T 11 N R 21 E COUNTY MUSKOGEE & HASKELL



| Course No. | Distance | Bearing | Course No. | Distance | Bearing |
|------------|----------|---------------|------------|----------|---------|
| 1 | 1254.50 | N 89°58'47" E | | | |
| 2 | 1360.85 | S 75°58'56" E | | | |
| 3 | 737.53 | S 63°26'15" E | | | |
| 4 | 991.11 | N 89°58'29" E | | | |
| 5 | 991.11 | N 89°58'29" E | | | |
| | | | | | |
| | | | | | |
| | | | | | |
| | | | | | |
| | | | | | |
| | | | | | |

CERTIFICATE OF SURVEY

I HEREBY CERTIFY THAT THE ABOVE PLAT IS A TRUE AND CORRECT REPRESENTATION OF THE SURVEY MADE IN SECTION

31, T 11 N, R 21 E, MUSKOGEE & HASKELL COUNTIES, OKLAHOMA

K.N. Cox

Field Book No. A-2787, Date 6-12-68

K.N. COX & ASSOCIATES - ENGINEERS

Under the Supervision of

**U.S. ARMY ENGINEER DISTRICT, TULSA
CORPS OF ENGINEERS**

LEGEND

- △ MONUMENT
- ORIGINAL CORNER
- IRON PIN