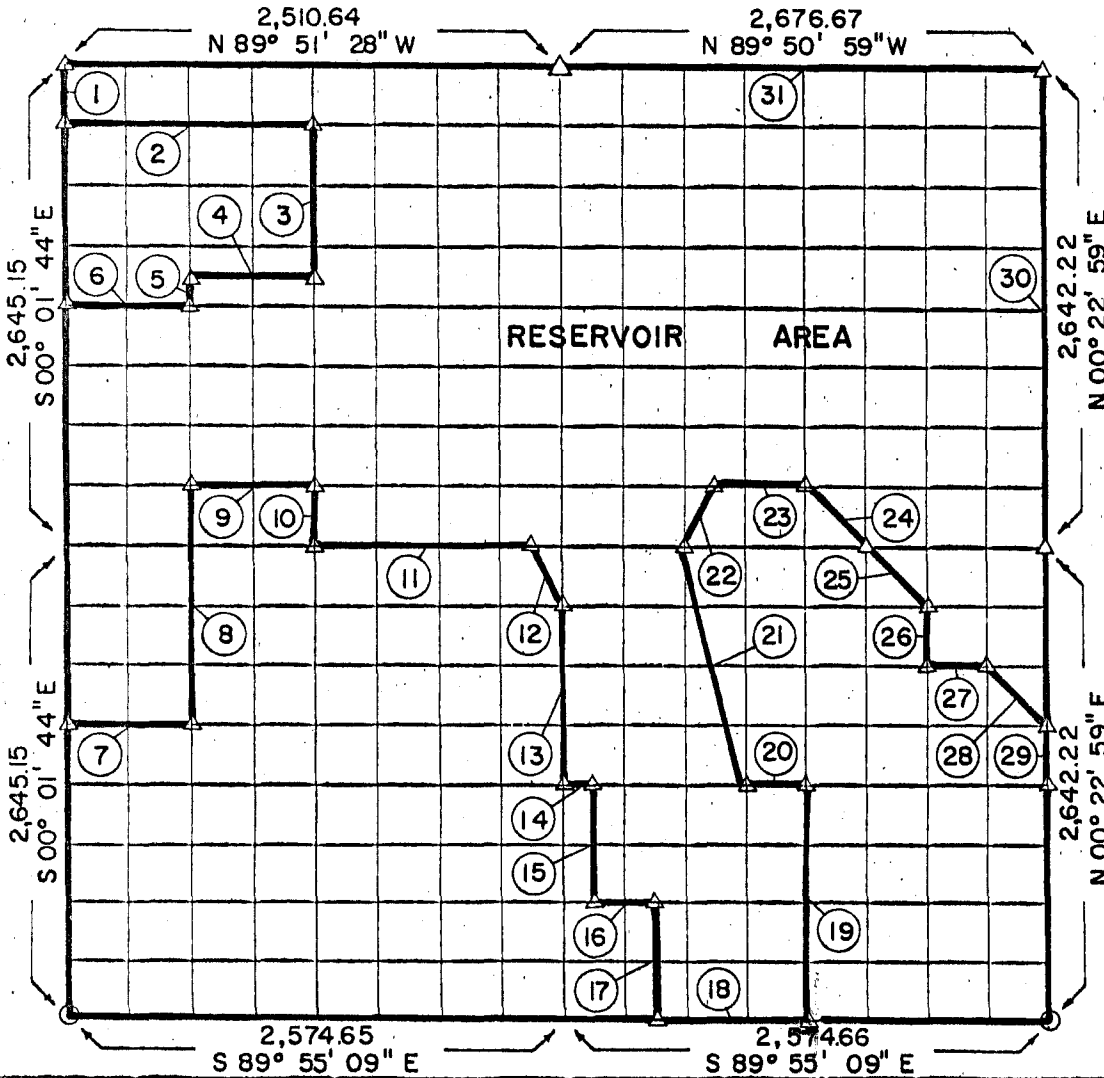


**PARTIAL BOUNDARY SURVEYS
ROBERT S. KERR LOCK & DAM IS
ARKANSAS RIVER, OKLAHOMA**

Performed Under Contract Number DACW 56-68-C-0243

SEC 6 T-11-N R-21-E COUNTY SEQUOYAH



Course No.	Distance	Bearing	Course No.	Distance	Bearing
1.	330.64	N00°01'44\"W	16.	330.57	S89°54'37\"E
2.	1255.28	S89°51'42\"E	17.	660.87	S00°03'37\"W
3.	826.40	S00°01'18\"E	18.	825.00	S89°55'09\"E
4.	627.59	N89°52'17\"W	19.	1321.50	N00°11'03\"E
5.	165.30	S00°01'31\"E	20.	331.15	N89°54'06\"W
6.	627.58	N89°52'23\"W	21.	1362.63	N13°58'48\"W
7.	627.43	S89°54'00\"E	22.	369.82	N26°48'22\"E
8.	1322.40	N00°01'31\"W	23.	498.87	S89°52'48\"E
9.	627.51	S89°53'05\"E	24.	468.30	S45°00'58\"E
10.	330.56	S00°01'18\"E	25.	467.86	S44°58'15\"E
11.	1098.11	S89°53'19\"E	26.	330.33	S00°17'01\"W
12.	366.13	S25°23'04\"E	27.	331.72	S89°53'34\"E
13.	991.43	S00°00'52\"E	28.	466.97	S44°52'49\"E
14.	165.50	S89°54'06\"E	29.	330.28	S00°22'59\"W
15.	660.03	S00°00'37\"W			

Book No. A 2884

Date: November 14, 1968

- △ Monument
- Original Corner
- Iron Pin

I, Jack R. Kalman, a Registered Professional Engineer, do hereby certify that the above plat is a true and accurate survey of Section 6, T-11-N, R-21-E as made under my supervision.

Jack R. Kalman
JACK R. KALMAN
Reg. Prof. Engr. No. 2786