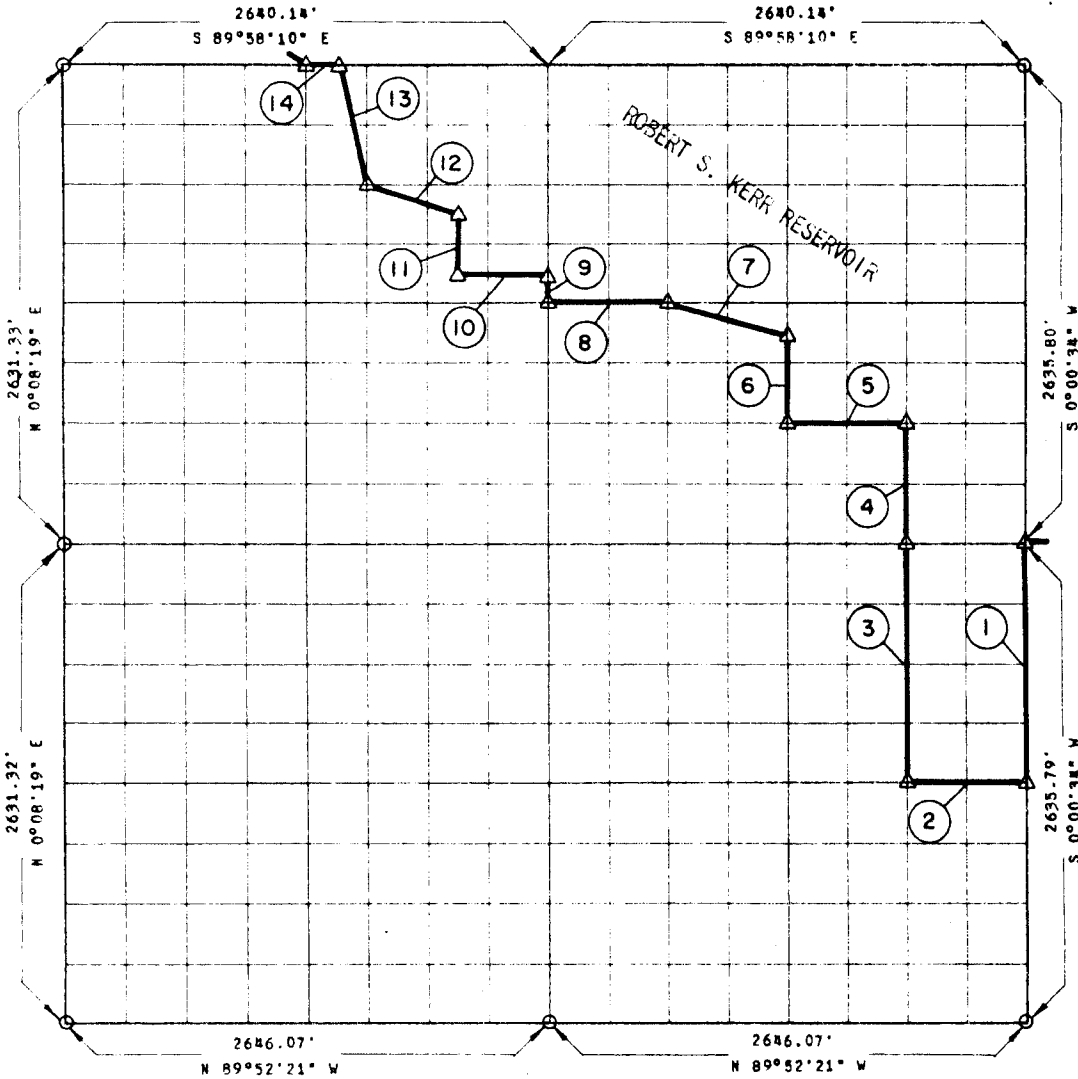


**PARTIAL BOUNDARY SURVEYS
ROBERT S. KERR LOCK & DAM 15
ARKANSAS RIVER, OKLAHOMA**

Performed Under Contract Number DACW 56-68-C-0103

SEC. 8 T 11 N R 21 E COUNTY MUSKOGEE



Course No.	Distance	Bearing	Course No.	Distance	Bearing
1	1317.90	S 00°00'34" W	14	165.01	N 89°58'10" W
2	661.15	N 89°53'49" W			
3	1317.62	N 00°01'32" E			
4	658.81	N 00°01'32" E			
5	660.59	N 89°56'00" W			
6	494.01	N 00°02'31" E			
7	680.67	N 75°56'43" W			
8	660.41	N 89°56'43" W			
9	164.60	N 00°04'32" E			
10	495.27	N 89°56'54" W			
11	329.16	N 00°05'10" E			
12	521.67	N 71°34'05" W			
13	678.35	N 13°58'49" W			

8,805

CERTIFICATE OF SURVEY

I HEREBY CERTIFY THAT THE ABOVE PLAT IS A TRUE AND CORRECT REPRESENTATION OF THE SURVEY MADE IN SECTION 8, T 11 N, R 21 E, MUSKOGEE COUNTY, OKLAHOMA.

Field Book No. A-2780, Date 6-12-68

K.N. COX & ASSOCIATES - ENGINEERS

Under the Supervision of

**U.S. ARMY ENGINEER DISTRICT, TULSA
CORPS OF ENGINEERS**

LEGEND

- △ MONUMENT
- ORIGINAL CORNER
- IRON PIN

K.N. Cox