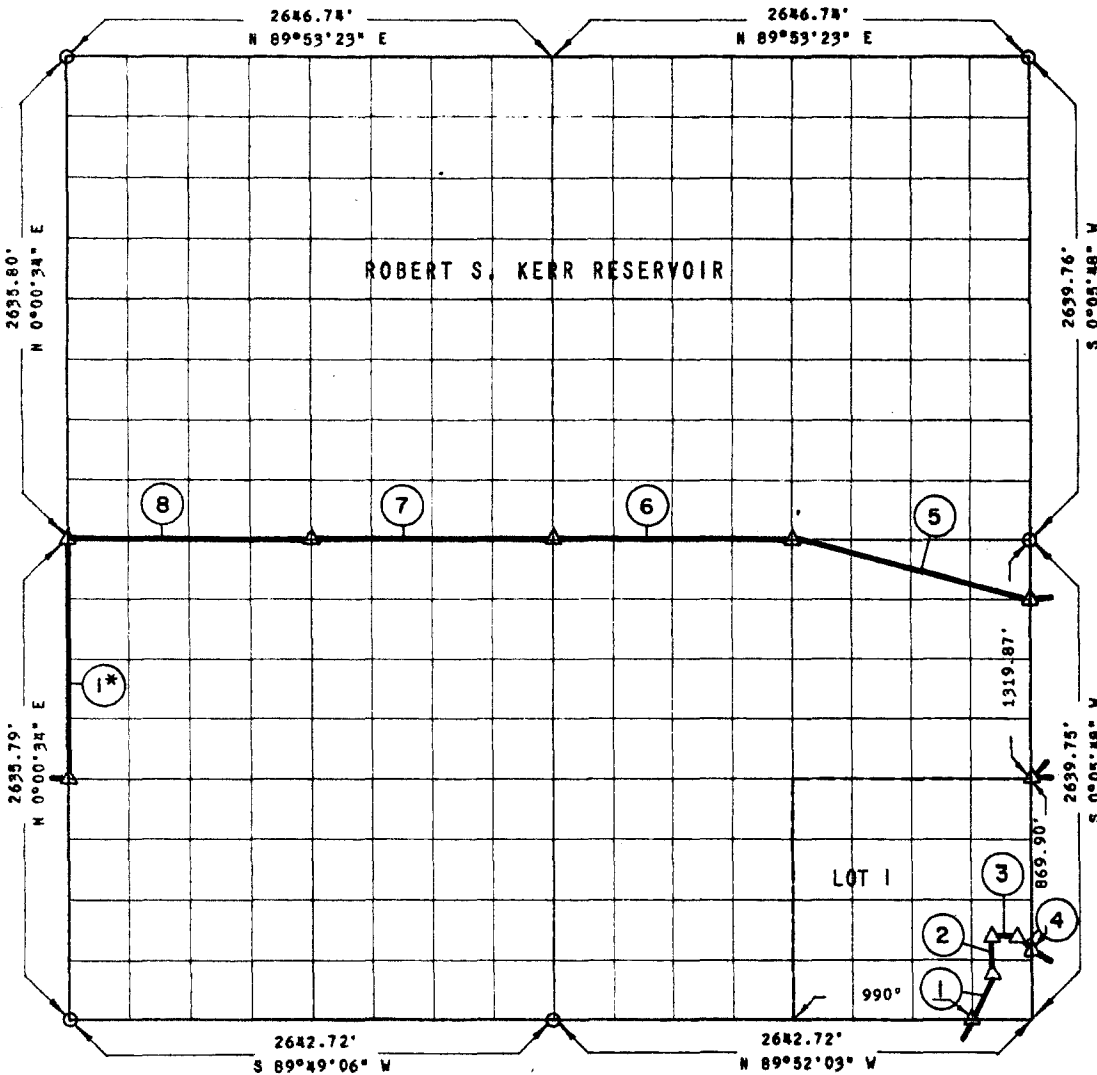


**PARTIAL BOUNDARY SURVEYS  
ROBERT S. KERR LOCK & DAM 15  
ARKANSAS RIVER, OKLAHOMA**

Performed Under Contract Number DACW 56-68-C-0103

**SEC. 9 T 11 N R 21 E COUNTY MUSKOGEE**



Course No.	Distance	Bearing	Course No.	Distance	Bearing
1	277.40	N 25°48'48" E	1*	See Plat for Sec. 8, T 11 N, R 21 E	
2	224.54	N 00°05'48" E			
3	198.00	S 89°52'03" E			
4	27.33	S 25°52'43" E			
5	1362.00	N 76°02'46" W			
6	1322.36	S 89°55'57" W			
7	1322.36	S 89°55'57" W			
8	1322.36	S 89°55'57" W			
6,056.35					

Field Book No. A-2781 , Date 6-12-68

**CERTIFICATE OF SURVEY**

I HEREBY CERTIFY THAT THE ABOVE PLAT IS A TRUE AND CORRECT REPRESENTATION OF THE SURVEY MADE IN SECTION 9, T 11 N, R 21 E, MUSKOGEE COUNTY, OKLAHOMA

**K.N. COX & ASSOCIATES - ENGINEERS**

Under the Supervision of

**U.S. ARMY ENGINEER DISTRICT, TULSA  
CORPS, OF ENGINEERS**

**LEGEND**

- △ MONUMENT
- ORIGINAL CORNER
- IRON PIN

*K.N. Cox*