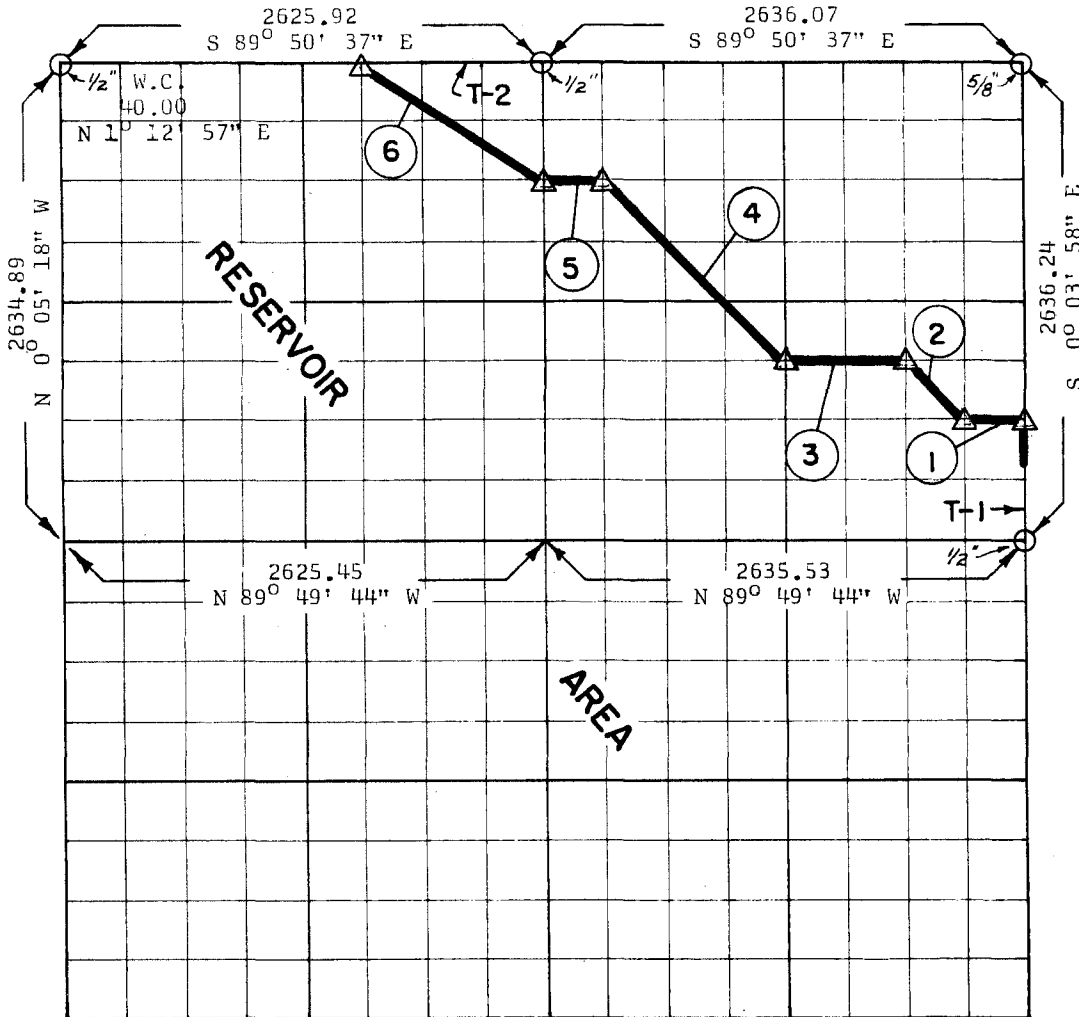


**PARTIAL BOUNDARY SURVEYS
ROBERT S. KERR LOCK & DAM 15
ARKANSAS RIVER, OKLAHOMA**

Performed Under Contract Number DA-34-066-Civeng 66-224

SEC 11 T-11-N R-22-E COUNTY SEQUOYAH



Course No.	Distance	Bearing	Course No.	Distance	Bearing
1	329.46	N 89° 49' 57" W			
2	466.92	N 44° 56' 48" W			
3	658.93	N 89° 50' 04" W			
4	1400.74	N 44° 57' 23" W			
5	329.49	N 89° 50' 24" W			
6	1187.06	N 56° 07' 45" W			
T-1	659.06	N 0° 03' 59" W			
T-2	984.72	S 89° 50' 37" E			
4,372.60					

CERTIFICATE OF SURVEY Field Book No. XA-2435 Date April 23, 1966

I HEREBY CERTIFY THAT THE ABOVE PLAT IS A TRUE AND CORRECT REPRESENTATION OF THE SURVEY MADE IN SECTION 11, T-11-N, R-22-E, SEQUOYAH COUNTY OKLAHOMA.

WHEELER & ASSOCIATES, ENGINEERS

Under the Supervision of

**U.S. ARMY ENGINEER DISTRICT, TULSA
CORPS OF ENGINEERS**

LEGEND

- Δ MONUMENT
- ORIGINAL CORNER
- IRON PIN
- HWY R/W MARKER

W. W. Wheeler