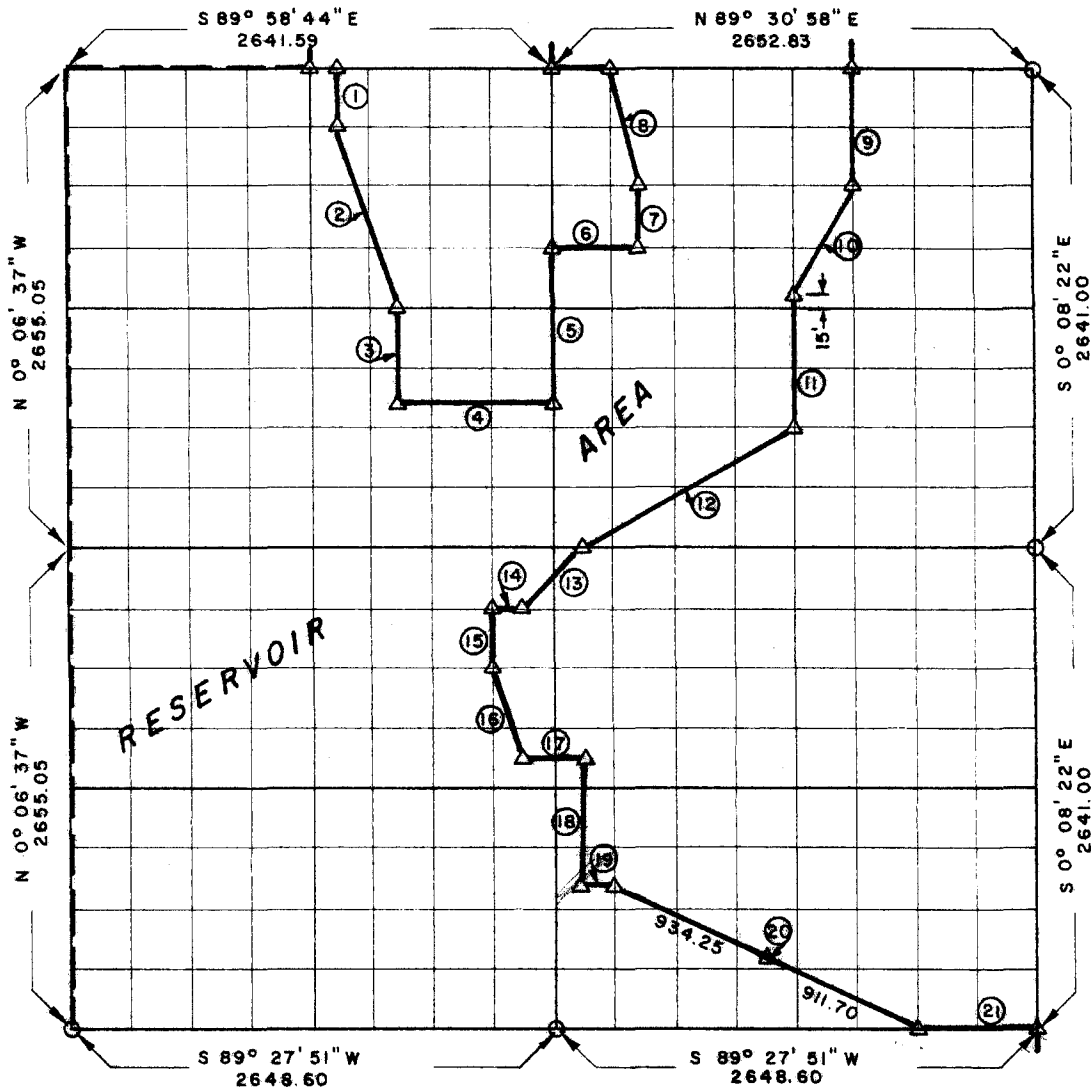


PARTIAL BOUNDARY SURVEYS
 ROBERT S. KERR LOCK & DAM 15
 ARKANSAS RIVER, OKLAHOMA

Performed Under Contract Number DACW 56-68-C-0101

SEC 13 T 11 N R 22 E COUNTY SEQUOYAH



Course No.	Distance	Bearing	Course No.	Distance	Bearing
1	330.57	S 0° 09' 11" E	14	165.35	S 89° 35' 48" W
2	1045.15	S 18° 35' 01" E	15	331.11	S 0° 10' 36" E
3	495.41	S 0° 09' 45" E	16	522.74	S 18° 37' 26" E
4	822.00	N 89° 44' 32" E	17	331.03	N 89° 32' 58" E
5	823.88	N 0° 11' 11" W	18	661.89	S 0° 11' 00" E
6	497.26	N 89° 33' 12" E	19	165.54	N 89° 30' 41" E
7	329.66	N 0° 10' 39" W	20	1845.95	S 63° 54' 49" E
8	678.99	N 14° 18' 28" W	21	662.14	N 89° 27' 51" E
9	659.83	S 0° 09' 26" E			
10	726.46	S 26° 59' 23" W			
11	674.68	S 0° 09' 47" E			
12	1336.35	S 60° 02' 16" W			
13	468.97	S 44° 42' 38" W			

13,574.96

CERTIFICATE OF SURVEY Field Book No. A-2767 Date MARCH 1968

JAMES E. CURRY, A REGISTERED
 PROFESSIONAL ENGINEER, DO
 HEREBY CERTIFY THAT THE ABOVE
 PLAT IS A TRUE AND ACCURATE
 REPRODUCTION OF SEC. 13, T. 11 N., R. 23 E.,
 OKLAHOMA, AS MADE UNDER MY
 SUPERVISION.

JAMES E. CURRY COMPANY

Under the Supervision of

U.S. ARMY ENGINEER DISTRICT, TULSA
 CORPS OF ENGINEERS

LEGEND

- ▲ MONUMENT
- ORIGINAL CORNER
- IRON PIN