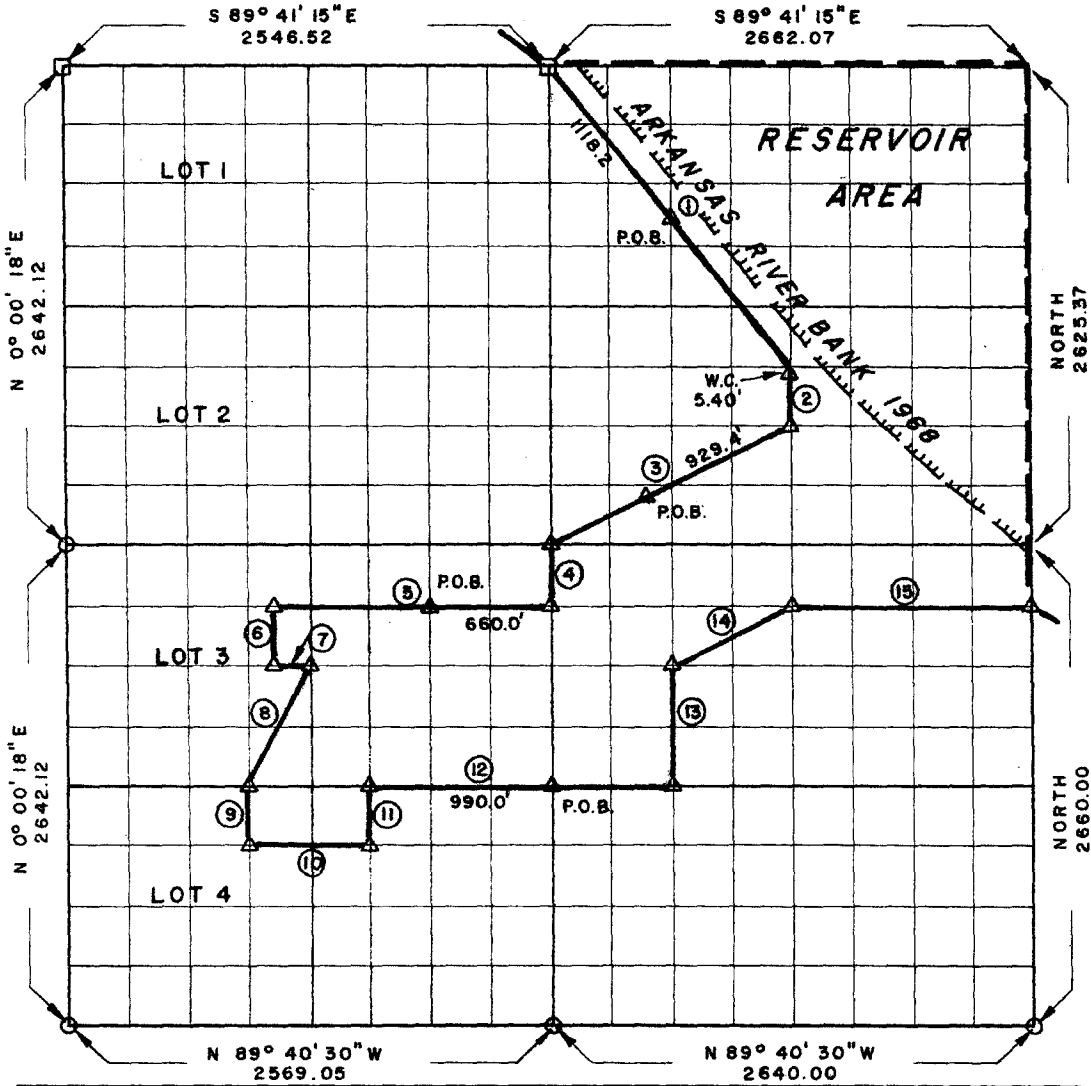


**PARTIAL BOUNDARY SURVEYS  
ROBERT S. KERR LOCK & DAM 15  
ARKANSAS RIVER, OKLAHOMA**

Performed Under Contract Number DACW 56-68-C-0101

SEC 19 T II N R 22 E COUNTY HASKELL



Course No.	Distance	Bearing	Course No.	Distance	Bearing
1	2124.79	S 38° 54' 22" E	12	1651.38	S 89° 40' 42" E
2	329.24	S 0° 07' 10" E	13	660.64	N 0° 10' 45" W
3	1473.22	S 63° 40' 07" W	14	737.63	N 63° 43' 09" E
4	330.31	S 0° 14' 21" E	15	1324.82	N 89° 47' 37" E
5	1485.00	N 89° 40' 50" W			
6	330.29	S 0° 14' 21" E			
7	165.00	S 89° 40' 47" E			
8	735.53	S 26° 24' 59" W			
9	330.26	S 0° 14' 21" E			
10	660.00	S 89° 40' 39" E			
11	330.29	N 0° 14' 21" W			

12,668.42

CERTIFICATE OF SURVEY Field Book No. A-2771 Date JUNE 1968

JAMES E. CURRY, A REGISTERED PROFESSIONAL ENGINEER, DO HEREBY CERTIFY THAT THE ABOVE PLAT IS A TRUE AND ACCURATE SURVEY OF SEC. 19, T II N, R 22 E, OKLAHOMA, AS MADE UNDER MY SUPERVISION.

**JAMES E. CURRY COMPANY**

Under the Supervision of

**U.S. ARMY ENGINEER DISTRICT, TULSA  
CORPS OF ENGINEERS**

LEGEND

- △ MONUMENT
- ORIGINAL CORNER
- IRON PIN