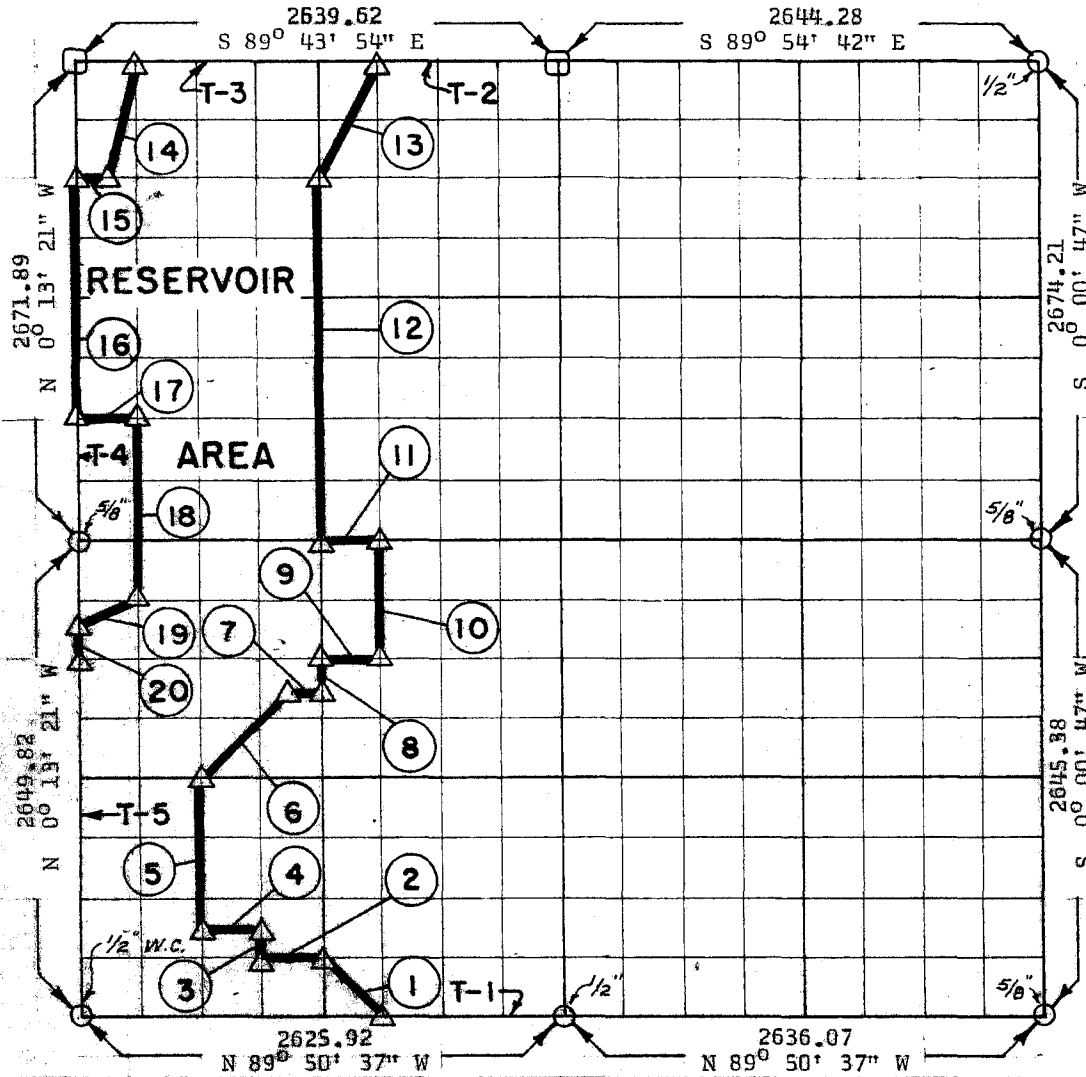


**PARTIAL BOUNDARY SURVEYS  
ROBERT S. KERR LOCK & DAM 15  
ARKANSAS RIVER, OKLAHOMA**

Performed Under Contract Number DA-34-066-Civeng 66-224

SEC 2 T-11-N R-22-E COUNTY SEQUOYAH



Course No.	Distance	Bearing	Course No.	Distance	Bearing
1	467.46	N 44° 45' 01" W	14	705.19	S 13° 18' 55" W
2	328.35	N 89° 50' 15" W	15	164.87	N 89° 44' 09" W
3	165.56	N 0° 10' 03" W	16	1322.41	S 0° 13' 21" E
4	328.40	N 89° 50' 05" W	17	329.31	S 89° 46' 49" E
5	827.89	N 0° 11' 09" W	18	993.55	S 0° 12' 16" E
6	697.73	N 44° 47' 53" E	19	367.23	S 63° 23' 33" W
7	164.41	S 89° 48' 38" E	20	165.61	S 0° 13' 21" E
8	165.54	N 0° 08' 57" W	T-1	984.72	S 89° 50' 37" E
9	328.88	S 89° 48' 28" E	T-2	989.82	S 89° 43' 54" E
10	662.10	N 0° 07' 51" W	T-3	1319.85	S 89° 43' 54" E
11	329.09	N 89° 47' 45" W	T-4	662.46	S 0° 13' 21" E
12	1984.18	N 0° 08' 57" W	T-5	1987.37	S 0° 13' 21" E
13	759.27	N 29° 36' 46" E		11,257.03	

CERTIFICATE OF SURVEY Field Book No. XA-2436 Date May 4, 1966

I HEREBY CERTIFY THAT THE ABOVE PLAT IS A TRUE AND CORRECT REPRESENTATION OF THE SURVEY MADE IN SECTION 2, T-11-N, R-22-E, SEQUOYAH COUNTY, OKLAHOMA.

**WHEELER & ASSOCIATES, ENGINEERS**  
Under the Supervision of  
**U.S. ARMY ENGINEER DISTRICT, TULSA  
CORPS OF ENGINEERS**

- LEGEND
- ▲ MONUMENT
  - ORIGINAL CORNER
  - IRON PIN
  - HWY R/W MARKER