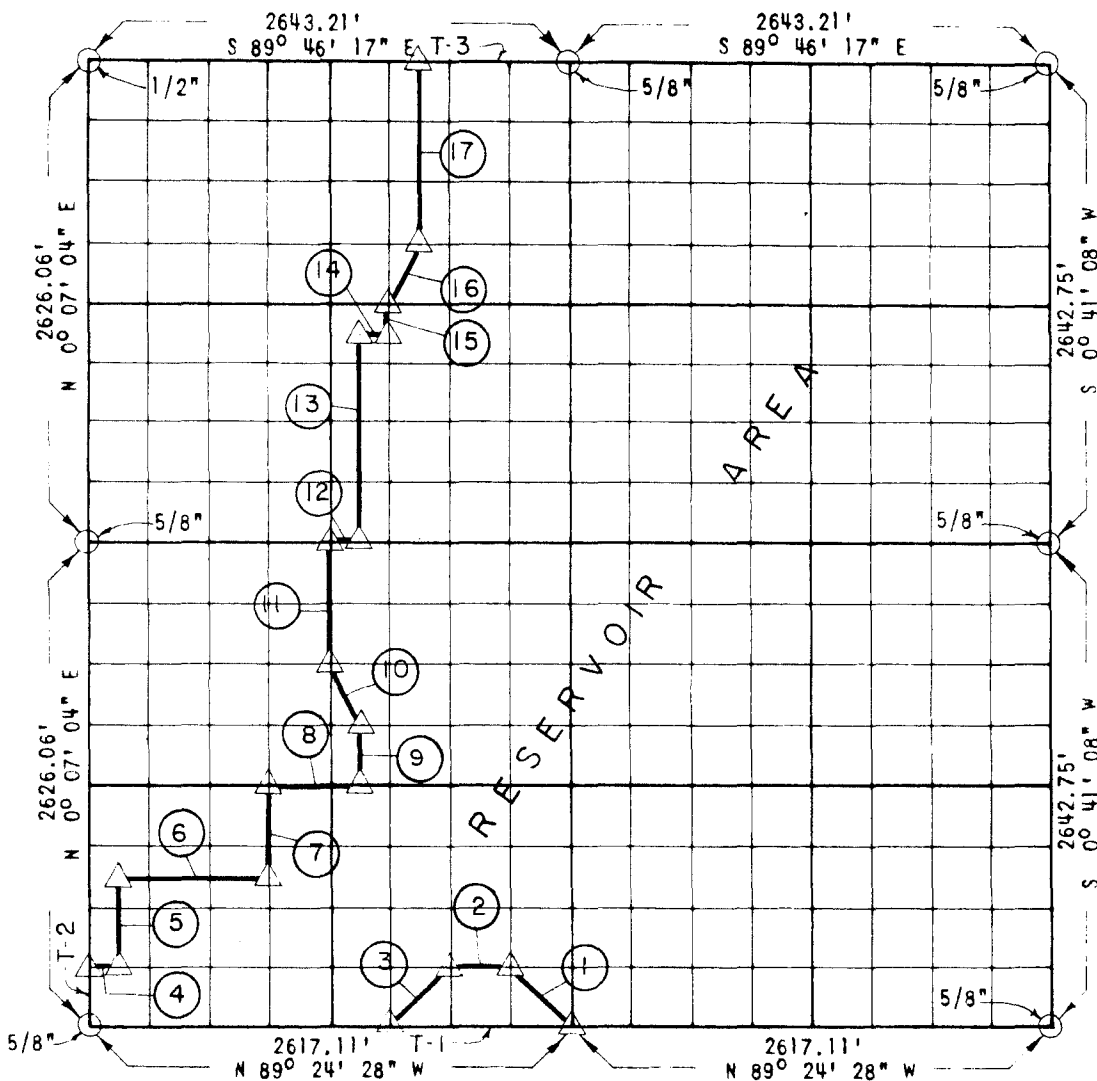


PARTIAL BOUNDARY SURVEYS
ROBERT S. KERR LOCK AND DAM 15
ARKANSAS RIVER, OKLAHOMA

Performed Under Contract Number DACW 56-68-C-0104

SEC 34 T-11-N R-22-E COUNTY HASKELL



Course No.	Distance	Bearing	Course No.	Distance	Bearing
1	464.92	N 44° 21' 07" W	14	164.74	S 89° 39' 35" E
2	327.34	N 89° 25' 43" W	15	164.48	N 0° 17' 46" E
3	462.87	S 45° 18' 08" W	16	367.96	N 26° 55' 10" E
4	163.67	S 89° 25' 43" E	17	987.12	N 0° 18' 50" E
5	492.47	N 0° 08' 08" E			
6	819.12	S 89° 27' 34" E	T-1	981.41	N 89° 24' 28" W
7	492.91	N 0° 13' 29" E	T-2	328.25	N 0° 07' 04" E
8	491.93	S 89° 29' 25" E	T-3	826.00	S 89° 46' 17" E
9	328.78	N 0° 16' 42" E			
10	367.98	N 26° 13' 10" W			
11	657.44	N 0° 15' 37" E			
12	164.38	S 89° 34' 21" E			
13	1151.14	N 0° 16' 42" E			

CERTIFICATE OF SURVEY Field Book No. A 2794 Date 6-7-68

I HEREBY CERTIFY THAT THE ABOVE PLAT IS A TRUE AND CORRECT REPRESENTATION OF THE SURVEY MADE IN SECTION 34, T-11-N, R-22-E, HASKELL COUNTY OKLAHOMA.

WHEELER - OAKLEY & ASSOCIATES
ENGINEERS
 Under the Supervision of
U.S. ARMY ENGINEER DISTRICT, TULSA
CORPS OF ENGINEERS

LEGEND
 Δ MONUMENT
 □ ORIGINAL CORNER
 ○ IRON PIN
 ■ HWY R/W MARKER

Robert S. Kerr
 REGISTERED PROFESSIONAL ENGINEER