

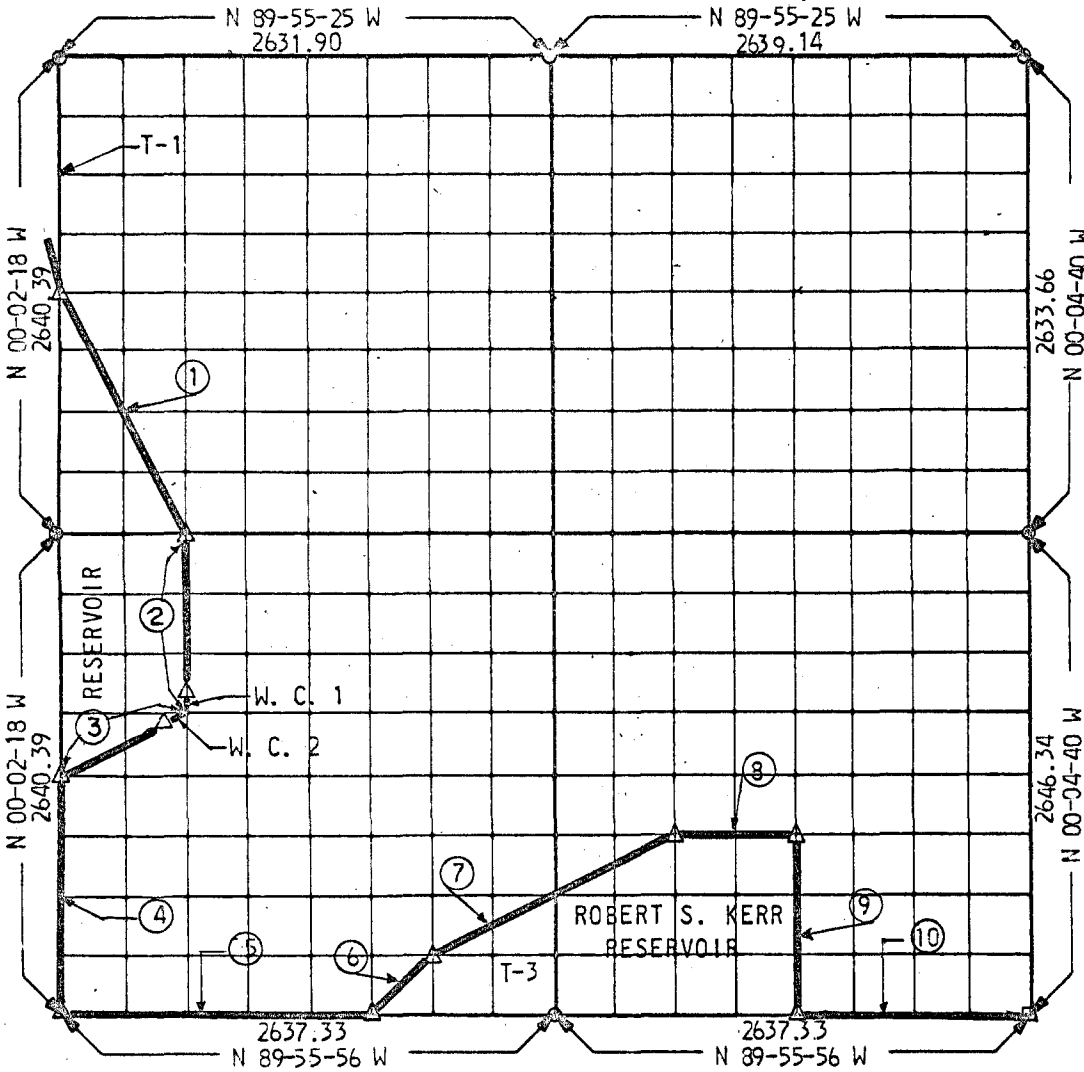
PARTIAL BOUNDARY SURVEYS

ROBERT S. KERR LOCK & DAM 15

ARKANSAS RIVER, OKLAHOMA

Performed Under Contract No. DACW 56-68-C-0105

SEC. 14 T-11-N R-23-E COUNTY SEQUOYAH



Course No.	Distance	Bearing	Course No.	Distance	Bearing
1	1475.81	S 26-32-41 E	T-3	938.99	
2	990.43	S 00-03-11 E			
3	736.62	S 63-24-28 W	W. C. 1	17.00	
4	1329.20	S 00-02-18 E	W. C. 2	35.00	
5	1648.33	S 89-55-56 E			
6	466.07	N 44-56-05 E			
7	1473.45	N 63-24-15 E			
8	659.42	S 89-57-22 E			
9	991.82	S 00-05-14 E			
10	1318.67	S 89-55-56 E			
T-1	1320.19				

Field Book No. A-2309 Date 5-2-68

CERTIFICATE OF SURVEY
 I HEREBY CERTIFY THAT THE ABOVE PLAT IS A TRUE AND CORRECT REPRESENTATION OF THE SURVEY MADE IN SECTION 14, T.11 N., R. 23 E., SEQUOYAH COUNTY, OKLAHOMA.

PHELPS, SPITZ, AMMERMAN & THOMAS INC.

Under the Supervision of

U.S. ARMY ENGINEER DISTRICT, TULSA
 CORPS OF ENGINEERS
 SHEET 1 of 14

LEGEND

- ▲ MONUMENT
- ORIGINAL CORNER
- IRON PIN