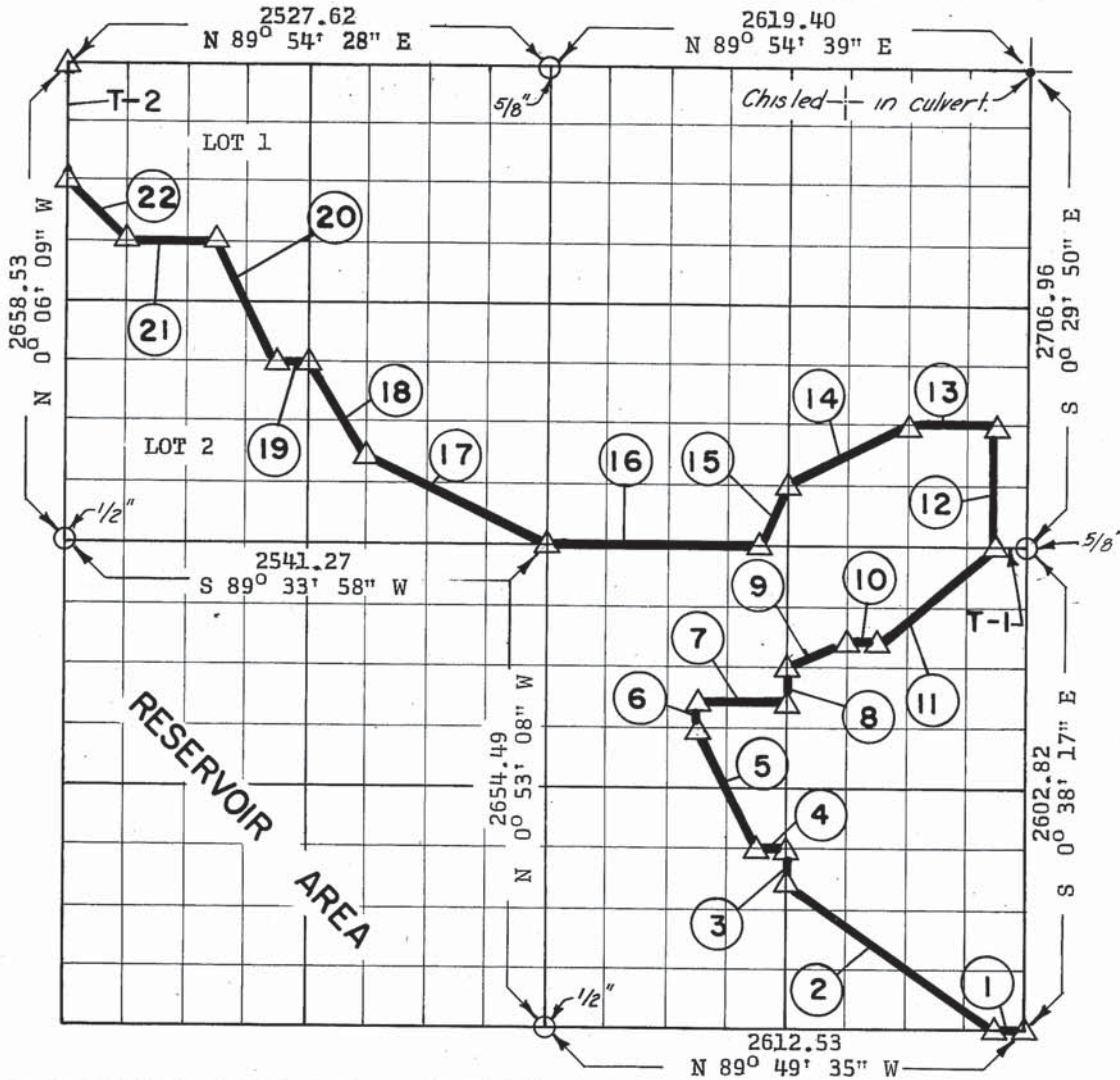


**PARTIAL BOUNDARY SURVEYS  
ROBERT S. KERR LOCK & DAM 15  
ARKANSAS RIVER, OKLAHOMA**

Performed Under Contract Number DA-34-066-Civeng 66-224

SEC 19 T-11-N R-23-E COUNTY SEQUOYAH



Course No.	Distance	Bearing	Course No.	Distance	Bearing
1	165.00	N 89° 49' 35" W	14	728.92	S 63° 39' 10" W
2	1419.12	N 54° 17' 12" W	15	367.97	S 26° 01' 11" W
3	160.74	N 0° 45' 47" W	16	1148.53	N 88° 42' 11" W
4	163.57	N 89° 24' 14" W	17	1102.89	N 63° 39' 51" W
5	743.41	N 26° 54' 31" W	18	595.89	N 33° 49' 57" W
6	164.90	N 0° 48' 33" W	19	167.31	N 89° 31' 02" W
7	491.46	S 89° 03' 11" E	20	737.90	N 26° 33' 54" W
8	164.29	N 0° 45' 47" W	21	495.00	N 90° 00' 00" W
9	361.93	N 64° 06' 24" E	22	398.95	N 35° 36' 22" W
10	163.92	S 88° 54' 46" E			
11	805.74	N 53° 46' 30" E			
12	675.75	N 0° 29' 28" W	T-1	164.08	N 88° 42' 11" W
13	491.93	N 89° 02' 56" W	T-2	669.26	N 0° 06' 09" W

CERTIFICATE OF SURVEY

Field Book No. A-2431 Date April 8, 1966

I HEREBY CERTIFY THAT THE ABOVE PLAT IS A TRUE AND CORRECT REPRESENTATION OF THE SURVEY MADE IN SECTION 19, T-11-N, R-23-E, SEQUOYAH COUNTY OKLAHOMA.

*W. S. Wheeler*  
REGISTERED PROFESSIONAL ENGINEER

**WHEELER & ASSOCIATES, ENGINEERS**

Under the Supervision of

**U.S. ARMY ENGINEER DISTRICT, TULSA  
CORPS OF ENGINEERS**

SHEET 2 of 13

LEGEND

- ▲ MONUMENT
- ORIGINAL CORNER
- IRON PIN
- HWY R/W MARKER