

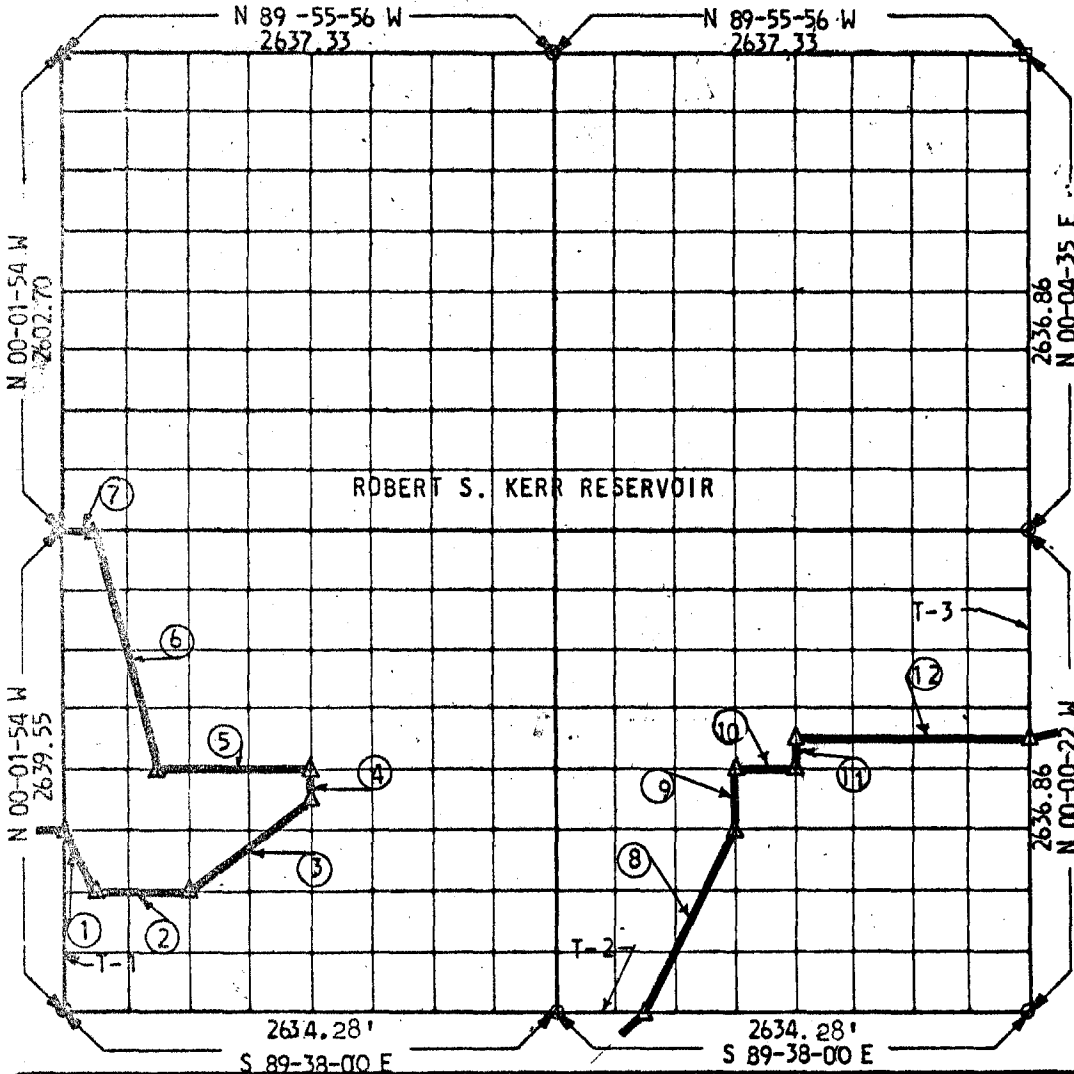
PARTIAL BOUNDARY SURVEYS

ROBERT S. KERR LOCK & DAM 15

ARKANSAS RIVER, OKLAHOMA

Performed Under Contract No. DACW 56-68-C-0105

SEC. 23 T-11-N R-23-E COUNTY SEQUOYAH



Course No.	Distance	Bearing	Course No.	Distance	Bearing
1	369.75	S 26-27-31 E			
2	493.70	S 89-37-34 E			
3	820.87	N 53-18-24 E			
4	164.93	N 00-00-15 W	T-1	989.83	
5	823.03	N 89-32-34 W	T-2	493.94	
6	1361.39	N 14-01-17 W	T-3	1153.63	
7	164.68	N 89-36-18 W			
8	1102.88	N 26-37-12 E			
9	329.71	N 00-00-51 E			
10	329.39	S 89-37-08 E			
11	164.85	N 00-01-06 E			
12	1317.59	S 89-37-02 E			

CERTIFICATE OF SURVEY

I HEREBY CERTIFY THAT THE ABOVE PLAT IS A TRUE AND CORRECT REPRESENTATION OF THE SURVEY MADE IN SECTION 23, T.11 N., R.23 E., SEQUOYAH COUNTY, OKLAHOMA.

Field Book No. A-2818 Date 5-21-68

PHELPS, SPITZ, AMMERMAN & THOMAS INC.

Under the Supervision of

**U.S. ARMY ENGINEER DISTRICT, TULSA
CORPS OF ENGINEERS
SHEET 4 of 14**

LEGEND

- ▲ MONUMENT
- ORIGINAL CORNER
- IRON PIN